

InLine EMC Enclosure Hinge Cover Type 1, 150x150x120mm, Light Gray, Mild Steel

CATALOG NUMBER

LHC151512EMC



InLine EMC Enclosures provide style, functionality and EMC protection. The flush body-to-door design can be secured by either screws or quarter-turn latches, making these enclosures an excellent choice for applications requiring an aesthetic appearance and EMC protection.

INDUSTRY STANDARDS

UL 508A Listed; Type 1; File No. E61997

cUL Listed per CSA C22.2 No. 94; Type 1; File No. E61997

Mounting brackets required to meet UL/CSA external mounting requirement.

NEMA/EEMAC Type 1

IEC 60529, IP40

FEATURES

Seams continuously welded and ground smooth

External formed body flange channels away liquids

Large perimeter body opening

Mounting holes in back of body for direct mounting or optional external mounting brackets

Bonding provision on cover and body

Metalized non-woven fabric EMI/RFI material covering UL94HP-rated urethane foam gasket

Plated interior surfaces for gasket contact areas and conduit entries

Hardware kit includes panel mounting screws, grounding hardware and sealing washers for wall-mounting holes

Installation instructions

Shielding effectiveness greater than 50 dB at 1 GHz

INLINE EMC Screw-Cover Enclosures:

Captivated cover screws with sealing bushings

Integral gasket compression stops

INLINE EMC Hinged-Door Enclosures:

Door opens 180 degrees

Removable hinged door

Self-grounding, slotted quarter-turn latch

Finish: Textured RAL 7035 light-gray polyester powder paint inside and out over a plated interior

Shielding effectiveness tested in accordance with: IEEE 299, VG 95-373 part 15, MIL-STD-285

PRODUCT ATTRIBUTES

Article Number: 30069

Height (H): 5.91in

Width (W): 5.91in

Depth (D): 4.72in

Material: Mild Steel

Finish: Powder Coated

Color: Light Gray

Color Code: RAL 7035

Thickness (T): 16ga

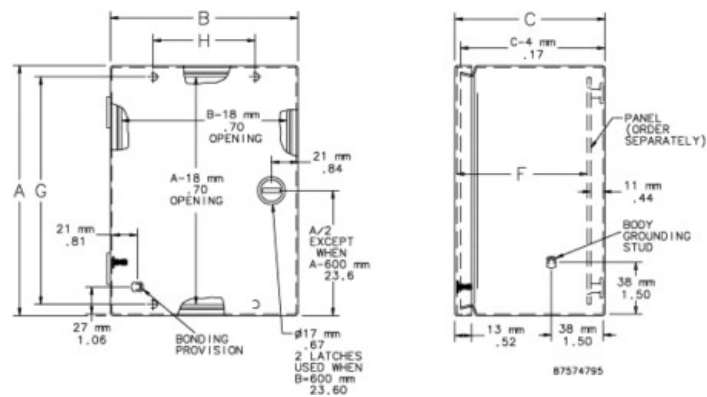
Mounting (G x H): 5.20 x 3.35in

Weight: 3.8lb

ADDITIONAL PRODUCT DETAILS

Purchase panels separately.

DIAGRAMS



WARNING

nVent products shall be installed and used only as indicated in nVent's product instruction sheets and training materials. Instruction sheets are available at www.nvent.com and from your nVent customer service representative. Improper installation, misuse, misapplication or other failure to completely follow nVent's instructions and warnings may cause product malfunction, property damage, serious bodily injury and death and/or void your warranty.



Our powerful portfolio of brands:

CADDY ERICO HOFFMAN ILSCO SCHROFF TRACHTE