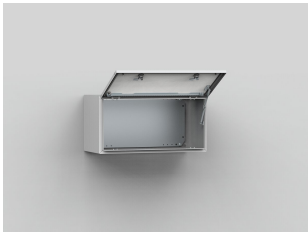


Wall mounted, 300x1200x300, Compact enclosure, 1-door, with MP, mild steel, IP66

CATALOG NUMBER

MAP0312030R5



The mild steel single door wall mounted range, MAP, with a IP 66 protection degree, comprises enclosures with a horizontally hinged door plus top and bottom gland plate openings. Each of these enclosures can be easily combined with another wall mounted enclosure, which allows for the creation of configurations with two compartments with individual access. Water and dust are prevented from entering the enclosure, thus eliminating the risk for component failure, and with that, unnecessary downtime.

INDUSTRY STANDARDS

cULus_UL Listed

CE, UK CA, UL

FEATURES

Material: Body: 1.5 mm mild steel. Gland plate: 1.4 mm mild steel. Door: 1.5 mm mild steel MAP0306030R5 / 2 mm MAP0308030R5 and above. Mounting plate: 2 mm galvanized steel.

Body: Folded and seam welded. Four 8.5 mm diameter holes for wall fixing, pressed out in 20.4 mm diameter x 2 mm depressions, to allow air circulation around the rear part of the enclosure.

Front panel: Surface mounted with 130° opening. Concealed removable hinges with captive pin. Hinges can be mounted to allow top or bottom opening. Mechanical door stop keeps the panel open. Inner M6 welded studs. One removable mounting profile on the hinge side. Sealing is ensured by an injected one piece polyurethane gasket.

Lock: Customized lock with double-bit for easy opening of the panel. Double-bit 3 mm insert and 90° movement. Other inserts are available as an accessory.

Mounting plate: The mounting plate is marked vertically at 10 mm intervals, for easy horizontal positioning of equipment. On the top and bottom there are holes to facilitate cable fixing. Fixed onto M8 press welded studs to the rear of the enclosure. All sides, from 800 mm and above, are strengthened by folded edges.

Gland Plate Opening: In top and bottom. Situated at the far rear of the enclosure, to make cabling onto the mounting plate easier. Gland plates (AF) and gaskets (AG) are not included. If the MAP panel is to be combined to an MAS or MAD enclosure, then the gland plate from the MAS/MAD enclosure can be used with the MAP panel.

Protection: Mounted stand alone, complies with IP 66, TYPE 4, 12, IK 10, providing you mount the gland plate(s) and gasket(s), supplied as an accessory. Combined with MAS or MAD, complies with IP 55, TYPE 12.

Finish: RAL 7035 structured powder coating.

Delivery: Enclosure with panel, one panel mounting profile and mounting plate (not included for item numbers ending with PER5). Plastic double-bit 3 mm key and mounting accessories. Earthing facilities.

PRODUCT ATTRIBUTES

Height (H): 300mm

Width (W): 1199mm

Depth (D): 300mm

Mounting Plate Included: Yes

Panel Size: 270 x 1150mm

Max Mounting Depth: 282mm

Latch Quantity: 2

Material: Mild Steel

Finish: Powder Coated

Color: Light Gray

Color Code: RAL 7035

Body Thickness: 1.5mm

Door Thickness: 1.5mm

Gland Plate Opening Width: 510mm

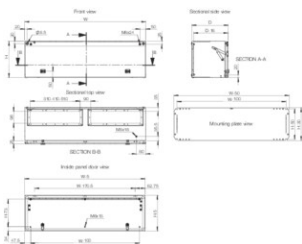
Gland Plate Opening Depth: 96mm

Gland Plate Type: 4

Number of Gland Plate Openings: 4

Weight: 26.12kg

DIAGRAMS



WARNING

nVent products shall be installed and used only as indicated in nVent's product instruction sheets and training materials. Instruction sheets are available at www.nvent.com and from your nVent customer service representative. Improper installation, misuse, misapplication or other failure to completely follow nVent's instructions and warnings may cause product malfunction, property damage, serious bodily injury and death and/or void your warranty.



Our powerful portfolio of brands:

CADDY ERICO HOFFMAN ILSCO SCHROFF TRACHTE