

# Concept Single-Door Enclosure, 60.00x36.00x16.00, Lt Gray, Steel

## CATALOG NUMBER

**CSD603616LG**



Concept Enclosures have streamlined styling, flush quarter-turn latches and an attractive, durable finish.

## INDUSTRY STANDARDS

UL 508A Listed; Type 4, 12; File No. E61997

cUL Listed per CSA C22.2 No. 94; Type 4, 12; File No. E61997

Wall-mounting brackets required to maintain UL/CSA external mounting requirement.

NEMA/EEMAC Type 4, 12, 13

IP66

IEC 60529, IP66

## FEATURES

Seams continuously welded and ground smooth

Corner-formed doors

Simple easy-to-remove and install hinge pins with built-in captivation clip

High-torque threadless studs and fasteners on door

Minimum-width body flange provides maximum door opening (210 degrees)

Door opens 210 degrees

External formed body flange

Panel mounting studs fit optional Concept panels and other accessories

Mounting holes in back of body for optional external wall-mount brackets

Removable door with hidden hinges for clean, aesthetic appearance

Seamless foam-in-place gasket

Quarter-turn slotted latch(es)

Door alignment device on doors wider than 30 inch

Four hinges on 60-inch high enclosures

Grounding stud on body; bonding provision on door

Provisions on door for optional high-impact thermoplastic data pocket

Hardware kit with panel mounting nuts, panel grounding hardware and sealing washers

Installation instructions provided

Three-point latch system on enclosures where A is equal to or greater than 42-in. with quarter-turn, slotted latch

## PRODUCT ATTRIBUTES

Article Number: 29526

Height (H): 60in

Width (W): 36in

Depth (D): 16in

Material: Mild Steel

Finish: Powder Coated

Color: Light Gray

Color Code: RAL 7035

Body Thickness: 14ga

Door Thickness: 14ga

Mounting (G x H): 58.50 x 34.50in

Latch Quantity: 1

Latch Type: 3-Point

Weight: 172lb

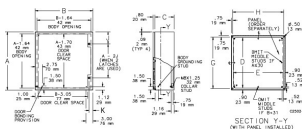
## ADDITIONAL PRODUCT DETAILS

Purchase panels separately.

Optional NEMA-size panels require conversion kit Catalog Number CCPM4.

Reference the Specification Sheet for Popular Cooling Products and Popular Accessories.

## DIAGRAMS



## WARNING

nVent products shall be installed and used only as indicated in nVent's product instruction sheets and training materials. Instruction sheets are available at [www.nvent.com](http://www.nvent.com) and from your nVent customer service representative. Improper installation, misuse, misapplication or other failure to completely follow nVent's instructions and warnings may cause product malfunction, property damage, serious bodily injury and death and/or void your warranty.



Our powerful portfolio of brands:

**CADDY ERICO HOFFMAN ILSCO SCHROFF TRACHTE**