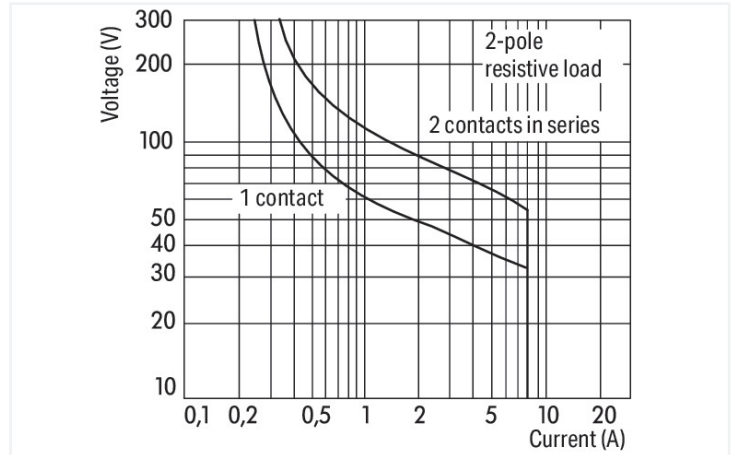
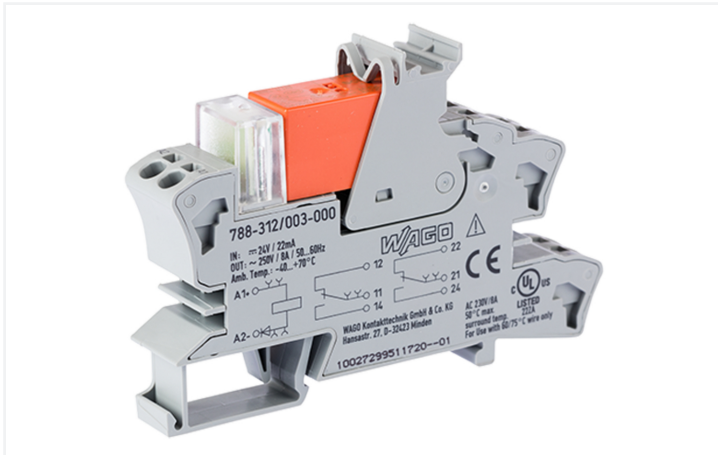


# Data Sheet | Item Number: 788-312/003-000

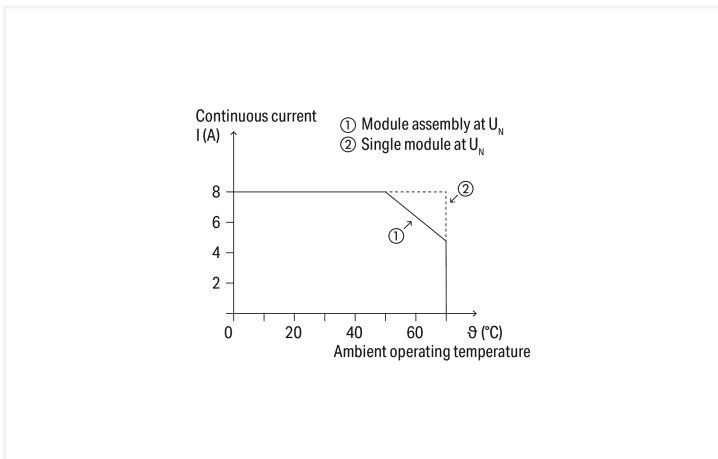
Relay module; Nominal input voltage: 24 VDC; 2 changeover contacts; Limiting continuous current: 8 A; Red status indicator; Module width: 15 mm



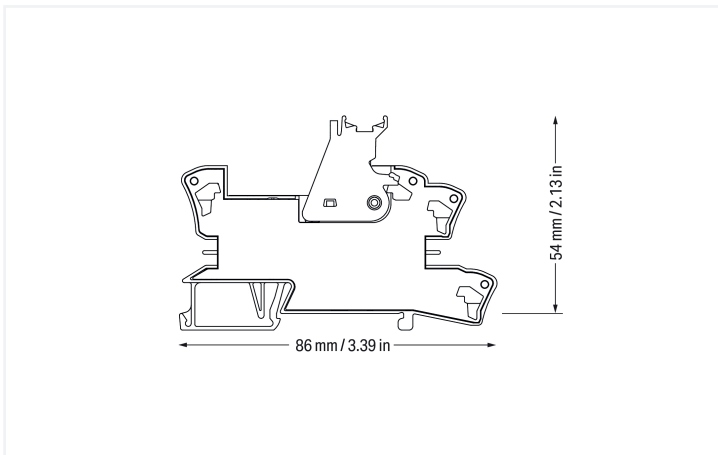
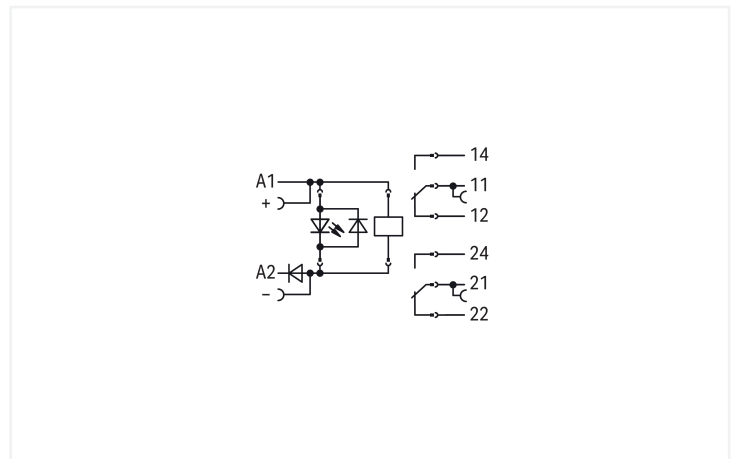
<https://www.wago.com/788-312/003-000>



DC load limit curve



Current-carrying capacity curve



## Notes

Safety Information	A separator plate (e.g., 209-191) must be used for voltages exceeding 250 V between adjacent relay modules and to comply with reinforced insulation requirements.
Note	Reinforced insulation between coil and contacts To protect the relay coils and contacts, inductive loads must be dampened with an effective protection circuit.

## Technical data

### Control circuit

Nominal input voltage $U_N$	24 VDC
Input voltage range	-25 ... +30 %
Nominal input current at $U_N$	19 mA

### Load circuit

Number of changeover/switchover contacts	2
Contact material (relay)	AgNi 90/10
Limiting continuous current	8 A
Inrush current (resistive) max.	(AC) 15 A / 4 s
Switching Voltage, Max.	250 VAC
Switching power (resistive) max.	AC 2000 VA; DC (see load limit curve)
Switching capacity	AC-15: 3 A / 250 VAC; DC-13: 2 A / 24 VDC
Recommended minimum load	12 V / 10 mA
Pull-in time (typ.)	7 ms
Drop-out time (typ.)	2 ms
Bounce time (typ.)	3 ms
Electrical life (NO; resistive load; 23 °C)	1 x 10 <sup>9</sup> switching operations
Mechanical life	30 x 10 <sup>6</sup> switching operations
Switching frequency with/without load (max.)	6 min <sup>-1</sup> / 1200 min <sup>-1</sup>

## Signaling

Status indicator	Red LED
------------------	---------

## Safety and protection

Rated Voltage	250 V
Rated impulse withstand voltage	4 kV
Pollution degree	3
Dielectric strength (control/load circuit) (AC, 1 min)	5 kVrms
Dielectric strength (open contact) (AC, 1 min)	1 kVrms
Dielectric strength (load/load circuit) (AC, 1 min)	2.5 kVrms
Safety Information	A separator plate (e.g., 209-191) must be used for voltages exceeding 250 V between adjacent relay modules and to comply with reinforced insulation requirements.
Protection type	IP20

## Connection Data

Connection technology	Push-in CAGE CLAMP®
Solid conductor	0.34 ... 2.5 mm <sup>2</sup> / 22 ... 14 AWG
Fine-stranded conductor	0.34 ... 2.5 mm <sup>2</sup> / 22 ... 14 AWG
Strip length	9 ... 10 mm / 0.35 ... 0.39 inches

### Physical data

Width	15 mm / 0.591 inches
Height	86 mm / 3.386 inches
Depth from upper-edge of DIN-rail	54 mm / 2.126 inches

### Mechanical data

Mounting type	DIN-35 rail
---------------	-------------

### Material data

Note (material data)	<a href="#">Information on material specifications can be found here</a>
Fire load	1.301 MJ
Weight	45.9 g

### Environmental requirements

Ambient temperature (operation at $U_N$ )	-40 ... +50 °C
Ambient temperature (storage)	-40 ... +70 °C
Processing temperature	-25 ... +50 °C
Temperature range of connection cable	$\geq (T_{\text{ambient}} + 20 \text{ K})$

### Standards and Specifications

Standards/specifications	EN 61010-2-201 EN 61810-1 EN 61373 UL 508 DNV
--------------------------	---

### Commercial data

Product Group	6 (INTERFACE ELECTRONIC)
PU (SPU)	20 (1) pcs
Packaging type	Box
Country of origin	CN
GTIN	4045454606930
Customs tariff number	85364900990

### Product Classification

UNSPSC	39122334
eCl@ss 10.0	27-37-16-01
eCl@ss 9.0	27-37-16-01
ETIM 9.0	EC001437
ETIM 10.0	EC001437
ECCN	NO US CLASSIFICATION

## Environmental Product Compliance

CAS-No.	7439-92-1 79-94-7
REACH Candidate List Substance	2,2',6,6'-tetrabromo-4,4'-isopropylidenediphenol Lead
RoHS Compliance Status	Compliant,With Exemption
RoHS Exemption	7(a)
SCIP notification number (Austria)	9035735b-410a-4c20-89ca-f0d7c4f87e23
SCIP notification number (Belgium)	57247416-01c6-47bb-a4bc-94d28cf8a276
SCIP notification number (Bulgaria)	4948945c-b28a-468e-9a81-8ac7eb6f08d5
SCIP notification number (Czech Republic)	ae551615-9e05-4ba2-832d-0ec364f27435
SCIP notification number (Denmark)	1b1b525f-a83e-49bd-9f97-695e333457a7
SCIP notification number (Finland)	e8a59ab9-b85c-4577-831f-7984130d503c
SCIP notification number (France)	09d13e32-5da1-4011-9c2d-62488def7271
SCIP notification number (Germany)	ca12d1f6-ee3c-46ec-a425-3430a3d5c1df
SCIP notification number (Hungary)	6412e37a-e7ff-4601-b34f-d0ad2aaf768c
SCIP notification number (Italy)	b356b6c0-c768-4bce-bb02-61c62ab87cd0
SCIP notification number (Netherlands)	12889a4e-25eb-4155-b2cf-16fac5a7707d
SCIP notification number (Poland)	8e073da7-7ef3-40e1-b1bc-5901b39973a5
SCIP notification number (Romania)	80021889-731c-474e-845c-a790a2f2e58b
SCIP notification number (Sweden)	7b9e8c10-d8ff-46b5-8871-bd81c6f2966a

## Approvals / Certificates

### General approvals



Approval	Standard	Certificate Name
EAC GZO Almaty Standart	TP TC 004/2011	EAC CoC 03084
UL Underwriters Laboratories Inc. (ORDINARY LOCATIONS)	UL 508	E175199 Vol.1 Sec.6

### Declarations of conformity and manufacturer's declarations

Approval	Standard	Certificate Name
EU-Declaration of Conformity WAGO GmbH & Co. KG	-	-
UK-Declaration of Conformity WAGO GmbH & Co. KG	-	-

### Approvals for marine applications



Approval	Standard	Certificate Name
DNV DNV Germany GmbH	DNV-CG-0339, Aug.2021	TAA00001D1
PRS Polski Rejestr Statków	-	TE/1098/880590/23

Downloads

Environmental Product Compliance

Compliance Search

Environmental Product Compliance  
788-312/003-000



Documentation

Instruction Leaflet

Sockets with Elementary Relay/ SSR

V 1.0.1  
09.10.2020

pdf  
2271.22 KB



CAD/CAE-Data

CAD data

2D/3D Models  
788-312/003-000



1 Compatible Products

1.1 Optional Accessories

1.1.1 Ferrule

1.1.1.1 Ferrule



[Item No.: 216-241](#)

Ferrule; Sleeve for 0.5 mm<sup>2</sup> / 20 AWG; insulated; electro-tin plated; electrolytic copper; gastight crimped; acc. to DIN 46228, Part 4/09.90; white

[Item No.: 216-242](#)

Ferrule; Sleeve for 0.75 mm<sup>2</sup> / 18 AWG; insulated; electro-tin plated; electrolytic copper; gastight crimped; acc. to DIN 46228, Part 4/09.90; gray

[Item No.: 216-243](#)

Ferrule; Sleeve for 1 mm<sup>2</sup> / AWG 18; insulated; electro-tin plated; electrolytic copper; gastight crimped; acc. to DIN 46228, Part 4/09.90; red

[Item No.: 216-244](#)

Ferrule; Sleeve for 1.5 mm<sup>2</sup> / AWG 16; insulated; electro-tin plated; electrolytic copper; gastight crimped; acc. to DIN 46228, Part 4/09.90; black



[Item No.: 216-542](#)

Twin ferrule; Sleeve for 2 x 1 mm<sup>2</sup> / AWG 2 x 18; red, insulated; 12 mm long; red

1.1.2 Jumper

1.1.2.1 Jumper



[Item No.: 788-118](#)

Jumper; for jumper slot; 2-way; from 1 to 3; insulated; light gray

[Item No.: 788-113](#)

Jumper; for jumper slot; 2-way; insulated; light gray

[Item No.: 859-402](#)

Jumper; for jumper slot; 2-way; insulated; light gray

[Item No.: 788-114](#)

Jumper; for jumper slot; 3-way; insulated; light gray



[Item No.: 788-115](#)

Jumper; for jumper slot; 4-way; insulated; light gray

[Item No.: 788-116](#)

Jumper; for jumper slot; 6-way; insulated; light gray

[Item No.: 788-117](#)

Jumper; for jumper slot; 8-way; insulated; light gray

### 1.1.3 Marking

#### 1.1.3.1 Double marker carrier



**Item No.: 209-128**  
Adaptor; gray

#### 1.1.3.2 Group marker carrier



**Item No.: 249-105**  
Group marker carrier; gray



**Item No.: 209-145**  
Group marker carrier; white

#### 1.1.3.3 Marker



**Item No.: 209-183**  
Marker; white



**Item No.: 793-502**  
WMB marking card; as card; MARKED; 1 ... 10 (10x); not stretchable; Horizontal marking; snap-on type; white



**Item No.: 793-503**  
WMB marking card; as card; MARKED; 11 ... 20 (10x); not stretchable; Horizontal marking; snap-on type; white



**Item No.: 793-504**  
WMB marking card; as card; MARKED; 21 ... 30 (10x); not stretchable; Horizontal marking; snap-on type; white



**Item No.: 793-505**  
WMB marking card; as card; MARKED; 31 ... 40 (10x); not stretchable; Horizontal marking; snap-on type; white



**Item No.: 793-501**  
WMB marking card; as card; not stretchable; plain; snap-on type; white



**Item No.: 2009-115**  
WMB-Inline; for Smart Printer; 1500 pieces on roll; stretchable 5 - 5.2 mm; plain; snap-on type; white

#### 1.1.3.4 Marking device



**Item No.: 210-110**  
Fiber-tip pen

#### 1.1.3.5 Marking strip



**Item No.: 2009-110**  
Marking strips; for Smart Printer; on reel; not stretchable; plain; snap-on type; white

#### 1.1.3.6 Protective marker cover



**Item No.: 209-184**  
Protection cover; transparent

## 1.1.4 Tool

### 1.1.4.1 Operating tool

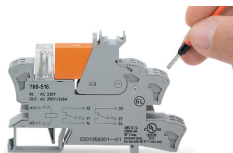


#### Item No.: 210-720

Operating tool; Blade: 3.5 x 0.5 mm; with a partially insulated shaft; multicoloured

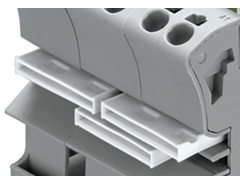
## Installation Notes

### Conductor termination



Conductor termination

### Commoning



Easy commoning using adjacent jumpers

### Marking



Marking using WMB Multi markers and group marker carriers.