



# LRS4581R-230001

LRS4000

2D LIDAR SENSORS

**SICK**  
Sensor Intelligence.



## Ordering information

Type	part no.
LRS4581R-230001	1098855

Other models and accessories → [www.sick.com/LRS4000](http://www.sick.com/LRS4000)



## Detailed technical data

## Features

<b>Application</b>	Outdoor, Indoor
<b>Light source</b>	Infrared (886 nm)
<b>Laser class</b>	1, Complies with 21 CFR 1040.10 and 1040.11 except for conformance with IEC 60825-1 Ed.3., as described in "Laser Notice No. 56" dated May 8, 2019 (IEC 60825-1:2014, EN 60825-1:2014)
<b>Aperture angle</b>	
Horizontal	360°
<b>Scanning frequency</b>	12.5 Hz 25 Hz
<b>Angular resolution</b>	
Horizontal	0.02° 0.04° 0.06° 0.08° 0.1° 0.12° 0.24°
<b>Heating</b>	Self-heating
<b>Working range</b>	0.2 m ... 300 m
<b>Scanning range</b>	
At 10% remission factor	100 m
At 90% remission factor	250 m
<b>Spot size</b>	2.6 mrad x 0.4 mrad (Single spot) 2.6 mrad x 0.4 mrad (+ angular resolution for HDDM <sup>+</sup> )
<b>Amount of evaluated echoes</b>	3

## Mechanics/electronics

<b>Connection type</b>	3 x M12
<b>Supply voltage</b>	10 V DC ... 30 V DC
<b>Power consumption</b>	Typ. 13 W, Max. 20 W

<b>Output current</b>	≤ 0.25 A
<b>Housing material</b>	AlSi12
<b>Housing color</b>	Gray (RAL 7042)
<b>Optical hood</b>	Polycarbonate (PC)
<b>Enclosure rating</b>	IP65 (IEC 60529:1989+AMD1:1999+AMD2:2013) IP67 (IEC 60529:1989+AMD1:1999+AMD2:2013)
<b>Protection class</b>	III (IEC 61140:2016-11)
<b>Electrical safety</b>	IEC 61010-1:2010-06
<b>Weight</b>	1.7 kg
<b>Dimensions (L x W x H)</b>	151.9 mm x 150 mm x 126.7 mm

## Performance

<b>Scan/frame rate</b>	37,500 measurement point/s ... 225,000 measurement point/s
<b>Response time</b>	≥ 40 ms
<b>Detectable object shape</b>	Almost any
<b>Systematic error</b>	± 15 mm
<b>Statistical error</b>	< 10 mm
<b>Temperature drift</b>	± 0.2 mm/K
<b>Integrated application</b>	Field evaluation Output of measurement data
<b>Number of field sets</b>	16 fields
<b>Filter</b>	Median filter Average filter Particle filter

## Interfaces

<b>Ethernet</b>	✓ , TCP/IP, UDP/IP
Function	Data interface (read result output)
Data transmission rate	10/100 MBit/s
<b>Digital inputs</b>	6
<b>Encoder inputs</b>	2
<b>Digital outputs</b>	6
<b>Optical indicators</b>	LEDs
<b>Configuration software</b>	Web server

## Ambient data

<b>Object remission</b>	2 % ... 1,000 % (Reflector)
<b>Electromagnetic compatibility (EMC)</b>	
Emitted radiation	Residential area (EN 61000-6-3:2007+AMD:A1:2011)
Electromagnetic immunity	Industrial environment (EN 61000-6-2:2005)
<b>Vibration resistance</b>	
Sine test	10 Hz ... 500 Hz, 5 g, 10 frequency cycles <sup>1)</sup>
<b>Shock resistance</b>	50 g, 11 ms, 6 shocks per axis <sup>2)</sup> 25 g, 6 ms, 1000 shocks per axis <sup>2)</sup>

<sup>1)</sup> EN 60068-2-6:2007.<sup>2)</sup> EN 60068-2-27:2008.

<b>Ambient operating temperature</b>	-30 °C ... +50 °C
<b>Storage temperature</b>	-40 °C ... +75 °C
<b>Permissible relative humidity</b>	≤ 90 %, Non-condensing
<b>Ambient light immunity</b>	80 klx

<sup>1)</sup> EN 60068-2-6:2007.

<sup>2)</sup> EN 60068-2-27:2008.

## General notes

<b>Note on use</b>	The sensor does not constitute a safety component as defined by relevant legislation on machine safety.
--------------------	---

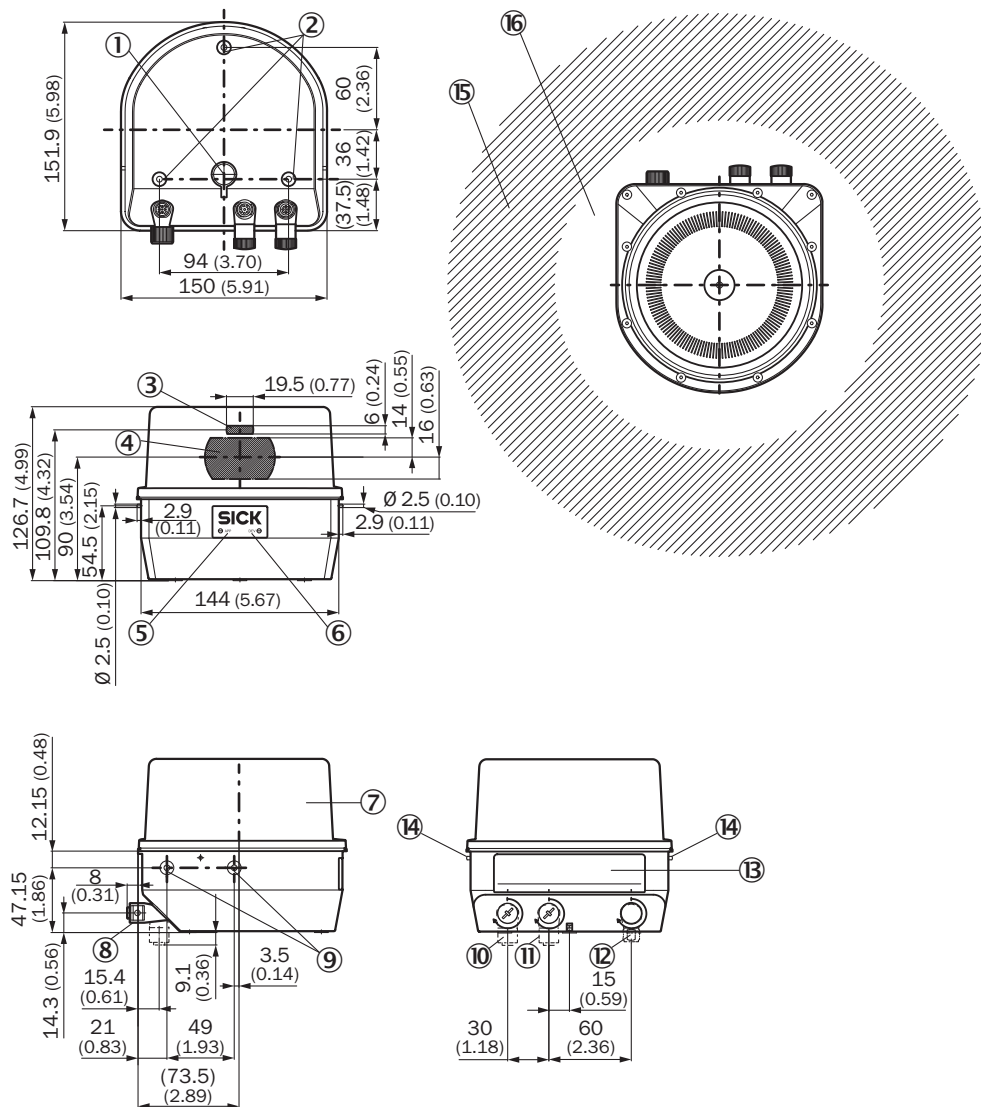
## Certificates

<b>EU declaration of conformity</b>	✓
<b>UK declaration of conformity</b>	✓
<b>ACMA declaration of conformity</b>	✓
<b>China-RoHS</b>	✓
<b>cTUVus certificate</b>	✓

## Classifications

<b>ECLASS 5.0</b>	27270990
<b>ECLASS 5.1.4</b>	27270990
<b>ECLASS 6.0</b>	27270913
<b>ECLASS 6.2</b>	27270913
<b>ECLASS 7.0</b>	27270913
<b>ECLASS 8.0</b>	27270913
<b>ECLASS 8.1</b>	27270913
<b>ECLASS 9.0</b>	27270913
<b>ECLASS 10.0</b>	27270913
<b>ECLASS 11.0</b>	27270913
<b>ECLASS 12.0</b>	27270913
<b>ETIM 5.0</b>	EC002550
<b>ETIM 6.0</b>	EC002550
<b>ETIM 7.0</b>	EC002550
<b>ETIM 8.0</b>	EC002550
<b>UNSPSC 16.0901</b>	41111615

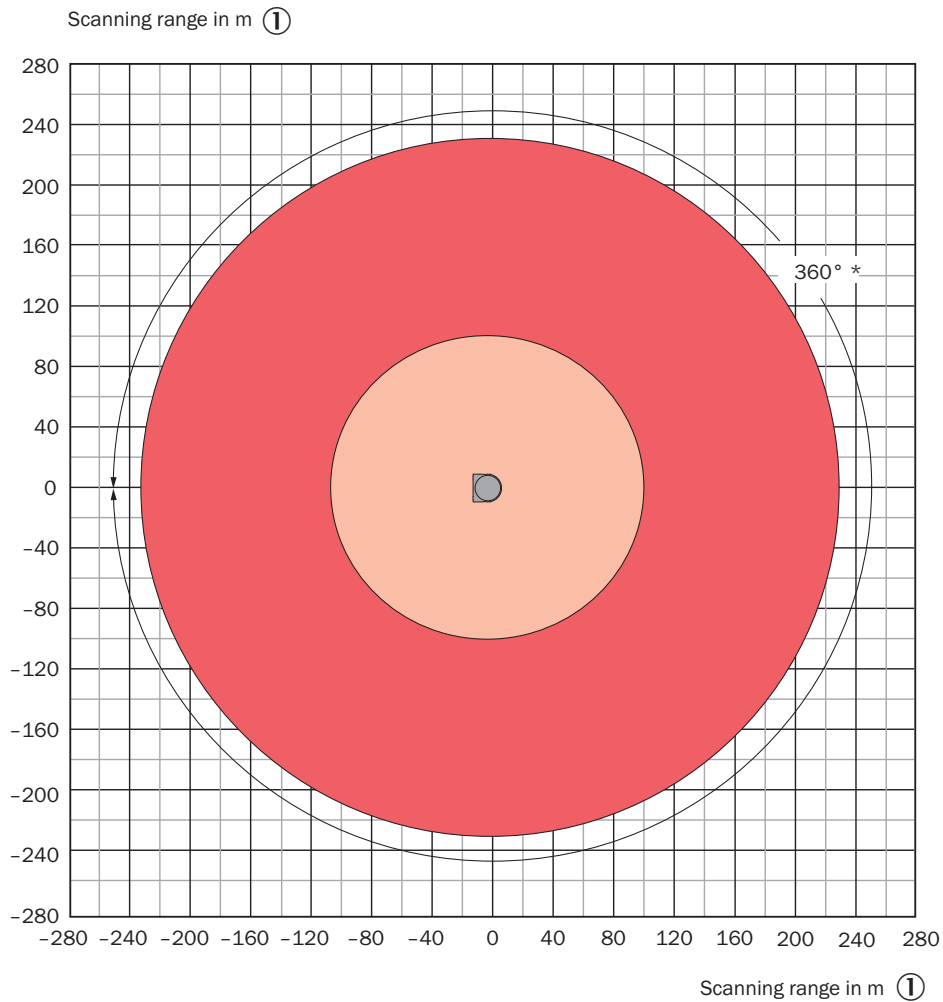
## Dimensional drawing



Dimensions in mm (inch)

- ① Gore-Tex membrane
- ② Fixing hole M5 x 7.5 (3 x)
- ③ sender
- ④ receiver
- ⑤ LED APP
- ⑥ LED DEV
- ⑦ Optical hood
- ⑧ Rotatable connections (max. 270°)
- ⑨ Fixing hole M5 x 7.5 (2 x)
- ⑩ Ethernet connection
- ⑪ I/O connection
- ⑫ POWER connection
- ⑬ type label
- ⑭ Locating pin for hooking into the bracket during mounting
- ⑮ Measuring range > 500 mm
- ⑯ Near range < 500 mm

### Working range diagram



\* With the angular resolution  $0.02^\circ/12.5\text{ Hz}$  and  $0.04^\circ/25\text{ Hz}$ , the aperture angle is limited to  $288^\circ$  ②

■ Scanning range max. for objects up to 90 % Remission 250 m ③

■ Scanning range for objects up to 10 % Remission 80 m ④

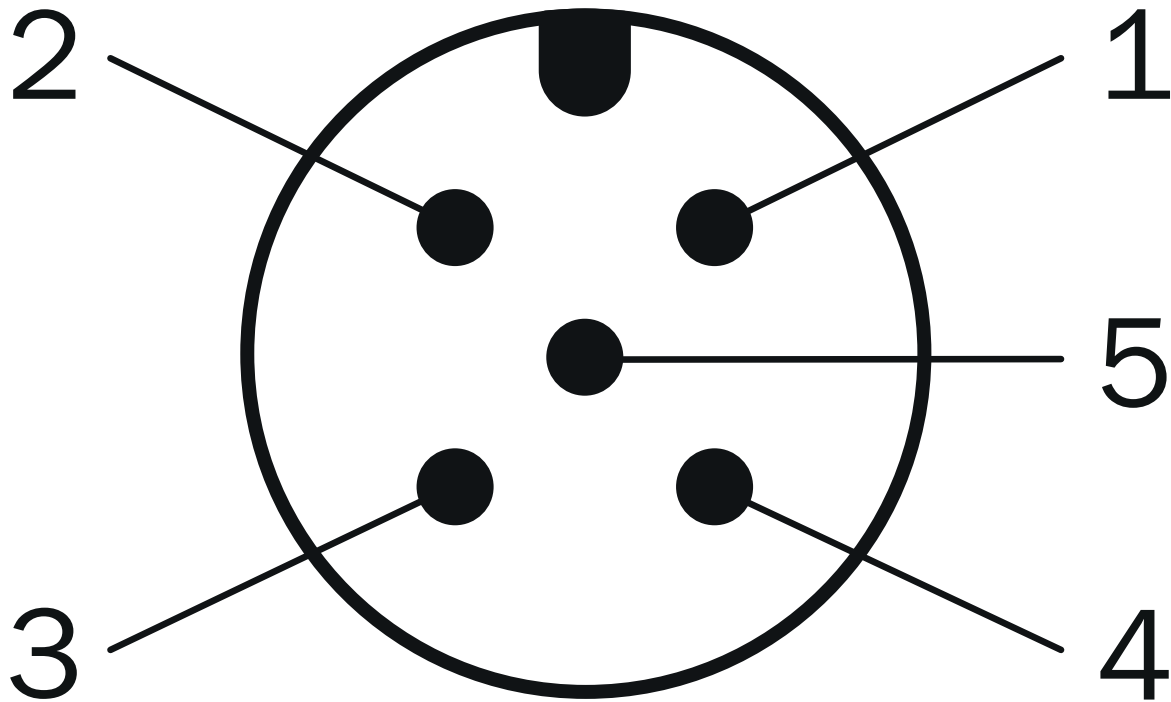
① Scanning range in m

② The aperture angle is limited to  $288^\circ$  with angular resolution  $0.020^\circ/12.5\text{ Hz}$  and  $0.040^\circ/25\text{ Hz}$

③ Scanning range for objects with up to 90% remission factor, 250 m

④ Scanning range for objects with up to 10% remission factor, 100 m

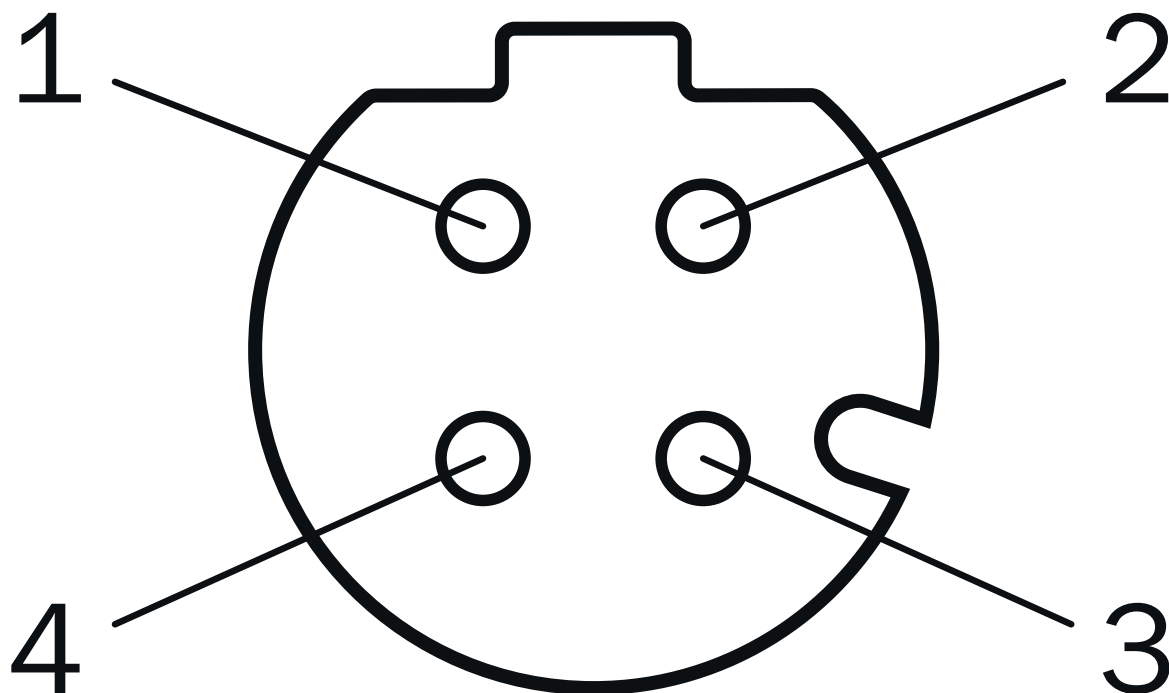
## PIN assignment POWER connection



male connector M12, 5-pin, A-coded

- ①  $V_s$
- ② Reserved
- ③ GND
- ④ IN8/OUT8
- ⑤ Reserved

### PIN assignment "Ethernet" connection

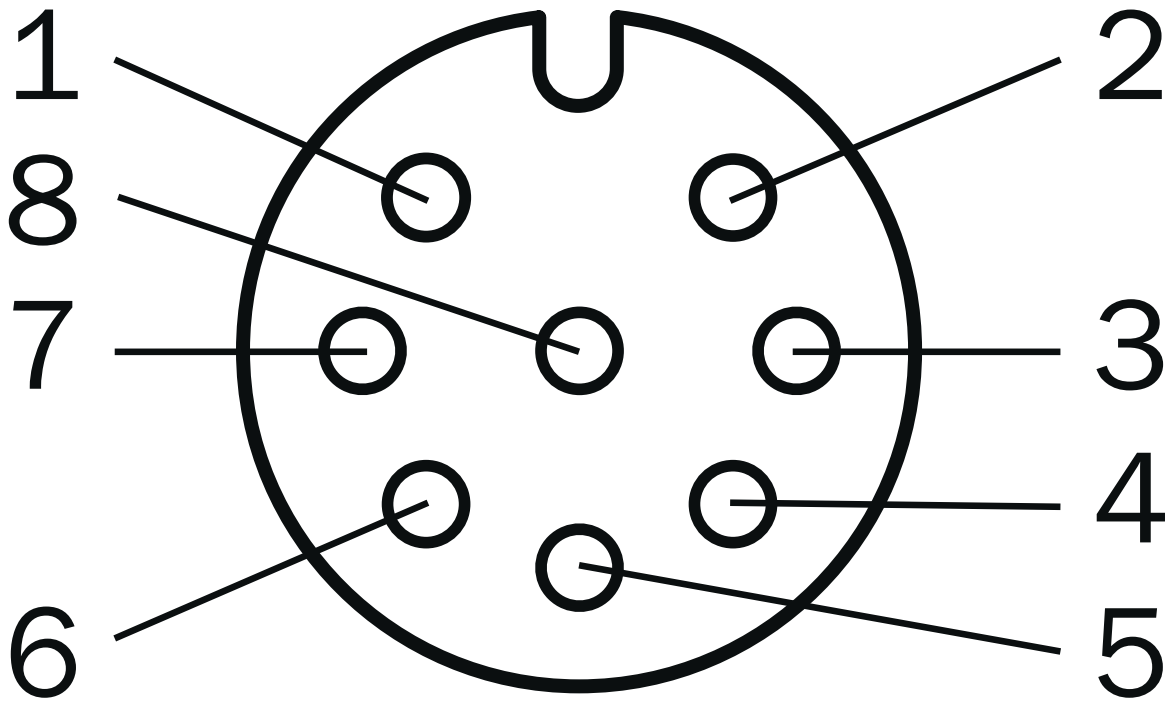


M12 female connector, 4-pin, D-coded

- ① TX+
- ② RX+
- ③ TX-
- ④ RX-



## PIN assignment I/O connection



female connector M12, 8-pin, A-coded

① In<sub>1</sub>






② In<sub>2</sub>

③ IN3/OUT3

④ IN4/OUT4

### Recommended accessories

Other models and accessories → [www.sick.com/LRS4000](http://www.sick.com/LRS4000)

	Brief description	Type	part no.
connectors and cables			
	<ul style="list-style-type: none"> <li><b>Connection type head A:</b> Female connector, M12, 5-pin, straight</li> <li><b>Connection type head B:</b> Flying leads</li> <li><b>Signal type:</b> Sensor/actuator cable</li> <li><b>Cable:</b> 10 m, 5-wire, PUR, halogen-free</li> <li><b>Description:</b> Sensor/actuator cable, shielded</li> <li><b>Connection systems:</b> Flying leads</li> <li><b>Application:</b> Uncontaminated zones, Zones with oils and lubricants, Robot, Drag chain operation</li> </ul>	YF2A65-100UE2XLEAX	2093090
	<ul style="list-style-type: none"> <li><b>Connection type head A:</b> Male connector, M12, 4-pin, straight, D-coded</li> <li><b>Connection type head B:</b> Male connector, RJ45, 4-pin, straight</li> <li><b>Signal type:</b> Ethernet, PROFINET</li> <li><b>Cable:</b> 10 m, 4-wire, CAT5, CAT5e, PUR, halogen-free</li> <li><b>Description:</b> Ethernet, shieldedPROFINET</li> <li><b>Application:</b> Cold bending resistant, Outdoor, Zones with oils and lubricants, seawater resistant</li> </ul>	YM2D34-100P-N4MRJA4	6054492
	<ul style="list-style-type: none"> <li><b>Connection type head A:</b> Male connector, M12, 8-pin, straight</li> <li><b>Connection type head B:</b> Flying leads</li> <li><b>Signal type:</b> Sensor/actuator cable</li> <li><b>Cable:</b> 10 m, 8-wire, PUR, halogen-free</li> <li><b>Description:</b> Sensor/actuator cable, shielded</li> <li><b>Connection systems:</b> Flying leads</li> <li><b>Application:</b> Uncontaminated zones, Zones with oils and lubricants, Robot, Drag chain operation</li> </ul>	YM2A68-100UA6XLEAX	6054490
	<ul style="list-style-type: none"> <li><b>Connection type head A:</b> Male connector, M12, 4-pin, straight, D-coded</li> <li><b>Connection type head B:</b> Male connector, RJ45, 4-pin, straight</li> <li><b>Signal type:</b> Ethernet, PROFINET</li> <li><b>Cable:</b> 30 m, 4-wire, CAT5, CAT5e, PUR, halogen-free</li> <li><b>Description:</b> Ethernet, shieldedPROFINET</li> <li><b>Application:</b> Cold bending resistant, Outdoor, Zones with oils and lubricants, seawater resistant</li> </ul>	YM2D34-300P-N4MRJA4	2142315
Mounting systems			
	<ul style="list-style-type: none"> <li><b>Description:</b> Easy Mount</li> <li><b>Dimensions (W x H x L):</b> 86 mm x 46 mm x 180 mm</li> <li><b>Material:</b> Stainless steel</li> <li><b>Details:</b> X6CRNITI1810 (1.4541)</li> <li><b>Items supplied:</b> Mounting kit 1a (2034324), 4 x M5 x 10 countersunk screws, stainless steel</li> <li><b>Suitable for:</b> LMS1000, MRS1000, LRS4000</li> </ul>	Mounting kit 1a	2093194

## SICK AT A GLANCE

SICK is one of the leading manufacturers of intelligent sensors and sensor solutions for industrial applications. A unique range of products and services creates the perfect basis for controlling processes securely and efficiently, protecting individuals from accidents and preventing damage to the environment.

We have extensive experience in a wide range of industries and understand their processes and requirements. With intelligent sensors, we can deliver exactly what our customers need. In application centers in Europe, Asia and North America, system solutions are tested and optimized in accordance with customer specifications. All this makes us a reliable supplier and development partner.

Comprehensive services complete our offering: SICK LifeTime Services provide support throughout the machine life cycle and ensure safety and productivity.

**For us, that is “Sensor Intelligence.”**

## WORLDWIDE PRESENCE:

Contacts and other locations –[www.sick.com](http://www.sick.com)