

**SAIL-M12WM12G-5-3.0V****Weidmüller Interface GmbH & Co. KG**

Klingenbergstraße 26

D-32758 Detmold

Germany

[www.weidmueller.com](http://www.weidmueller.com)

Sensor/actuator cables are used for wiring sensors and actuators and for transmitting data or power in various applications. The moulded cable offers connected and tested connection of the plug-in connector to the cable ex-works. The cables may be exposed to a wide range of conditions, such as humidity, dust, heat, cold, shock or vibration.

Our developers have focused specifically on this issue and designed a host of different M8 and M12 sensor-actuator cables so you are bound to find the solution you need for your application.

Is there something you have not managed to find or you feel needs explanation? Talk to us!

**General ordering data**

Version	Sensor/actuator line, Connecting line, M12 / M12, Number of poles : 5, 3 m, pin, straight - socket, straight, Shielded: No, LED: No, Sheath material: PVC, Halogen: Yes
Order No.	<a href="#">2503570300</a>
Type	SAIL-M12WM12G-5-3.0V
GTIN (EAN)	4050118518627
Qty.	1 ST

**SAIL-M12WM12G-5-3.0V****Weidmüller Interface GmbH & Co. KG**

Klingenbergstraße 26

D-32758 Detmold

Germany

www.weidmueller.com

**Technical data****Approvals**

Approvals



ROHS

Conform

**Dimensions and weights**

Net weight

148.72 g

**Environmental Product Compliance**

RoHS Compliance Status

Compliant with exemption

RoHS Exemption (if applicable/known)

6c

REACH SVHC

Lead 7439-92-1

SCIP

1c533b66-fcff-4da5-b89f-fd55fbf5cb55

**Technical specifications for cable**

Cable length

3 m

Suitable for cable carriers

No

Shielded

No

Insulation

PVC

Configurable cable length

Yes

Sheathing colour

black

Core cross-section

0.34 mm<sup>2</sup>

Halogen

Yes

Sheath material

PVC

Outer cladding in accordance with UL AWM style

2464 (80 °C / 300 V)

Irradiation crosslinked

No

Colour coding

brown, white, blue, black, grey

Welding spark resistance

No

Torsion resistance

0 °/m

Temperature range, stationary

-30...80 °C

Temperature range, moving

-5...80 °C

Resistant to welding beads

No

Outside diameter

5.7 mm ± 0.2 mm

Number of poles

5

**General technical data**

Coding

A-coded

Contact surface

Gold-plated

Version

pin, straight - socket, straight

Connection thread

M12 / M12

LED

No

Housing main material

PUR

Insulation strength

108 Ω

Rated current

4 A

Rated voltage

60 V

Protection degree

IP67, IP68, when fully mounted, IP65, IP66

Plugging cycles

≥ 100

jumpered

No

Pollution severity

3

Temperature range of housing

-25...+85 °C

Threaded ring material

Diecast zinc

Tightening torque

M12: 0.8 - 1.2 Nm

Shock and vibration proof according to

Section B

**Electrical properties**

Insulation strength

108 Ω

Rated voltage

60 V

**Standards**

Shock and vibration proof according to Section B

**SAIL-M12WM12G-5-3.0V****Weidmüller Interface GmbH & Co. KG**

Klingenbergstraße 26

D-32758 Detmold

Germany

[www.weidmueller.com](http://www.weidmueller.com)**Technical data****Plug, left**

Plug left

M12, A-coded, IP69,  
male contact, angled 90°,  
Plastic, unshielded**Plug, right**

Plug right

M12, A-coded, IP69,  
female contact, straight,  
Plastic, unshielded**Classifications**

ETIM 6.0

EC001855

ETIM 7.0

EC001855

ETIM 8.0

EC001855

ETIM 9.0

EC001855

ETIM 10.0

EC001855

ECLASS 9.0

27-06-03-11

ECLASS 9.1

27-06-03-11

ECLASS 10.0

27-06-03-11

ECLASS 11.0

27-06-03-11

ECLASS 12.0

27-06-03-11

ECLASS 13.0

27-06-03-11

ECLASS 14.0

27-06-03-11

ECLASS 15.0

27-06-03-11

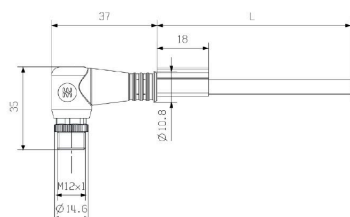
## SAIL-M12WM12G-5-3.0V

**Weidmüller Interface GmbH & Co. KG**  
Klingenbergstraße 26  
D-32758 Detmold  
Germany

[www.weidmueller.com](http://www.weidmueller.com)

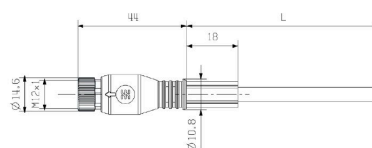
## Drawings

### Dimensioned drawing



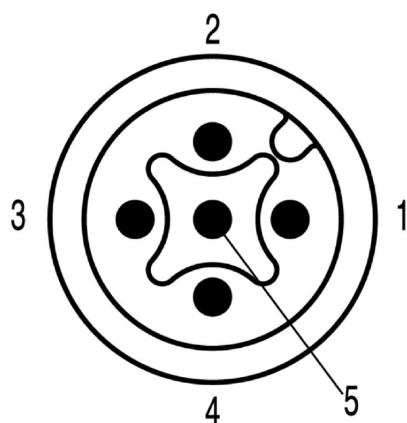
Male, angled

### Dimensioned drawing



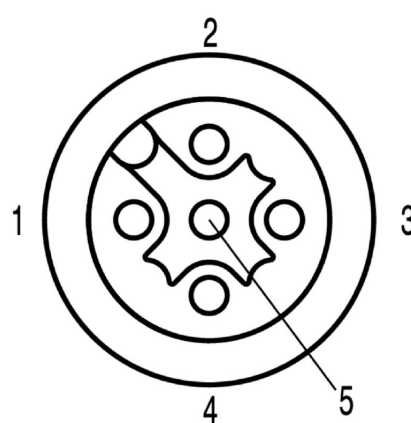
Straight socket

### Pole scheme



Male

### Pole scheme



Socket

### SAIL-M12WM12G-5-3.0V

## Drawings

### Wiring diagram



### The ideal tool: Screwty® with torque function

Light, securely screwed-in round plug-in connectors. Screwty set DM / VPE: 1 / Order No.: 1920000000 Adapters: M12, M12 F, M8, M8 F