

**KTB MH 916115 S4E1****Weidmüller Interface GmbH & Co. KG**

Klingenbergstraße 26

D-32758 Detmold

Germany

[www.weidmueller.com](http://www.weidmueller.com)**Similar to illustration**

Abbildung ähnlich

The Klippon® TB enclosure range provides excellent performance characteristics, even under the most difficult environmental conditions. In addition, it complies with the stricter requirements of potentially explosive atmospheres found specifically in the process or power generation industries. The Klippon® TB MH enclosure range offers further improvements to a product line that is already successfully leading the market.

The Klippon® TB MH enclosure range has the following advantages:

- Available in 15 sizes and 3 standard depths
- Equipped with up to 4 gland plates
- The gasket is protected against compression
- Completely removable padlock tab
- Cover lock outside the sealed zone
- Improved temperature performance
- IP66/IP67 protection
- Completely removable lid – without a tool
- Earthing stud in the cover and base of the enclosure
- Welded mounting feet
- International approvals

**General ordering data**

Version	Klippon TB MH (Terminal Box - Multi Hinge), Empty enclosure, stainless steel enclosure, Height: 914 mm, Width: 610 mm, Depth: 150 mm, Gland plates: Bottom, Material: Stainless steel 1.4404 (316L), electropolished, silver
Order No.	<a href="#">1195510000</a>
Type	KTB MH 916115 S4E1
GTIN (EAN)	4032248978267
Qty.	1 ST

**KTB MH 916115 S4E1**
**Weidmüller Interface GmbH & Co. KG**

Klingenbergstraße 26

D-32758 Detmold

Germany

[www.weidmueller.com](http://www.weidmueller.com)
**Technical data**
**Approvals**

Approvals



ROHS Conform

 UL File Number Search [UL Website](http://UL Website)

Certificate no. (cULus) E243298

**Dimensions and weights**

Depth	150 mm	Depth (inches)	5.9055 inch
Height	914 mm	Height (inches)	35.9842 inch
Width	610 mm	Width (inches)	24.0157 inch
Mounting dimension - height	559 mm	Mounting dimension - width	636 mm
Net weight	25000 g		

**Temperatures**

Operating temperature	-60 °C...135 °C	Note: room temperature (service)	Limited to IP66 protection when used in temperatures greater than 105 °C.
-----------------------	-----------------	----------------------------------	---

**Environmental Product Compliance**

RoHS Compliance Status	Compliant with exemption
RoHS Exemption (if applicable/known)	6c
REACH SVHC	Lead 7439-92-1
SCIP	8d5fcdfe-c58e-44e1-a6b4-74d2bbccc9dd

**Cable glands, left**

M63	0	M75	0
M12	70	M50	8
M16	40	M32	12
M25	14	M20	34
M40	10		

**Cable glands, right**

M25	14	M63	0
M75	0	M16	40
M40	10	M50	8
M32	12	M20	34
M12	70		

## KTB MH 916115 S4E1

Weidmüller Interface GmbH &amp; Co. KG

Klingenbergstraße 26  
D-32758 Detmold  
Germany

[www.weidmueller.com](http://www.weidmueller.com)

## Technical data

## Cable glands, top/bottom

M20	25	M12	53
M63	0	M40	8
M32	9	M25	11
M50	6	M75	0
M16	29		

## Certificate numbers enclosure

Certificate No. UL Haz.Loc.	E223792	Declaration of Conformatiy No. (DoC LVD)	DE PS261X 160412 001ISS03
Certificate No. UL Ord.Loc.	E243298	Certificate No. UL 508A	E223801
Attestation of Conformatiy No. (AoC)	DE PS261X 160309 001ISS06	Certificate No. UL Terminal Box	E223792
Certificate No. Electronic Box (NEPSI)	2020322303003289	Certificate no. empty enclosure (ECAS)	21-09-25241/ E21-09-053807
Certificate no. Terminal Box (KOSHA)	16-AV4BO-0245X	Certificate no. empty enclosure (INMETRO)	LMP 21.0016U
Certificate No. (DNV)	TAE000013S	Certificate no. Terminal Box (AEx)	E223792
Certificate No. (CCOE)	P461058_1	Certificate no. Terminal Box (ATEX)	IBExU14ATEX1050
Certificate no. empty enclosure (ATEX)	IBExU14ATEX1028 U	Certificate no. Terminal Box (INMETRO)	LMP 21.0017
Certificate no. (INMETRO)	IEX13.0007	Certificate no. Terminal Box (IECEX)	IECEXIBE14.0013
Certificate no. empty enclosure (IECEX)	IECEX IBE 14.0004U	Certificate No. (IECEX)	IECEXPTB11.0071
Certificate No. (ATEX)	PTB11ATEX2019	Approval conditions	ATEX, CCoE, DNV, IECEX, INMETRO, KC, NEPSI, CCC, UL AEx Class Div., UL AEx Class Zone, cULus
Certificate no. (cULus)	E243298		

## General information

Material thickness of cover	1.5 mm	Material thickness of flange	3 mm
Material thickness of enclosure	1.5 mm	Operating temperature, max.	135 °C
Operating temperature, min.	-60 °C	Lid attachment	4 hinges and M6 hex-head slotted screws SW10
Standards	DIN EN 62208 - Empty enclosure standard, DIN EN 61373 Class 1B**, DIN EN 15085-2, EN 60079-0, EN 60079-7, EN 60079-31, IEC 60079-0, IEC 60079-7, IEC 60079-31	Surface finish	electropolished
Impact resistance	7 J ATEX version, 10 J version standard	AF size	10 mm
Protection degree	IP66, IP67	Material	Stainless steel 1.4404 (316L)
Seal material	Silicone	Torque for lid screws	2.5 Nm
Integral fixing	4, 6 or 9 stud bolts M6 inner (female) thread	Enclosure attachment	4 welded-on mounting feet with 11 mm holes (2 slotted feet and 2 cross-shaped feet)
Note: protection class	If used in temperature ranges above 105 °C, IP protection is limited to IP 66.	Flange plate mounting	M6 hexagonal head screws 10 SW
Protection class (UL)	Type 3, Type 4X, Type 12	Number of lid screws	12
Gland plates	Bottom	Dimension of box	800x1070x240
Access opening: width	551 mm	Opening angle lid	130.00 °

## KTB MH 916115 S4E1

Weidmüller Interface GmbH &amp; Co. KG

Klingenbergstraße 26

D-32758 Detmold

Germany

www.weidmueller.com

## Technical data

Overall dimensions	925 x 661 x 165	Flange plate	Yes
Max. payload	223 kg	Lid	Yes
Access opening: height	861 mm	Position PE bolts	Enclosure side C
Areas of use	Explosive risk zone, Process industry, Oil and gas industry, Chemical industry, Offshore, Onshore		

## Housing earth

Earth, enclosure, internal	Welded-on M6 stainless- steel earth stud in enclosure body and lid.
----------------------------	---

## horizontal assembly

WDU 10 / ZDU 10	6x50	WDU 16 / ZDU 16	5x40
WDU 2,5 / ZDU 2,5 / IDU 2,5	8x99	WDU 35 / ZDU 35	4x30
WDU 4 / ZDU 4	7x80	WDU 6 / ZDU 6	7x62

## vertical assembly

WDU 10 / ZDU 10	3x85	WDU 16 / ZDU 16	3x66
WDU 2,5 / ZDU 2,5 / IDU 2,5	5x157	WDU 35 / ZDU 35	2x49
WDU 4 / ZDU 4	4x132	WDU 6 / ZDU 6	4x100

## Classifications

ETIM 6.0	EC002503	ETIM 7.0	EC002503
ETIM 8.0	EC002503	ETIM 9.0	EC002503
ETIM 10.0	EC002503	ECLASS 9.0	27-18-05-02
ECLASS 9.1	27-18-05-02	ECLASS 10.0	27-18-05-02
ECLASS 11.0	27-18-05-02	ECLASS 12.0	27-18-05-02
ECLASS 13.0	27-18-05-02	ECLASS 14.0	27-18-05-02
ECLASS 15.0	27-18-05-02		

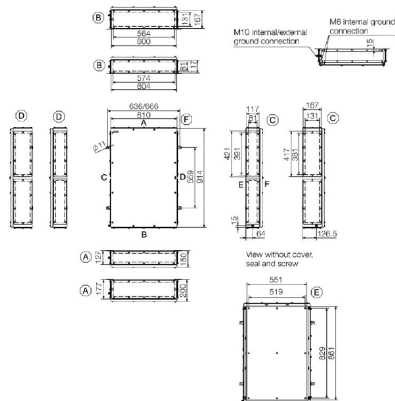
## KTB MH 916115 S4E1

**Weidmüller Interface GmbH & Co. KG**  
Klingenbergstraße 26  
D-32758 Detmold  
Germany

## Drawings

[www.weidmueller.com](http://www.weidmueller.com)

### Dimensioned drawing



# KTB MH 916115 S4E1

**Weidmüller Interface GmbH & Co. KG**  
Klingenbergstraße 26  
D-32758 Detmold  
Germany

www.weidmueller.com

## Accessories

### 914 x 610mm



Integrate, expand and customise: The ideal expansion for every application

The consistent structure of accessories for the new Klippon® TB enclosure range means that you can easily adapt the enclosure to the specific requirements of each application.

Mounting plates

Mounting plates, with and without hole patterns, for longitudinal and transverse mounting of DIN mounting rails or components directly onto the mounting plate.

#### General ordering data

Type	KTB MOPL 9161 MSZN	Version
Order No.	<a href="#">1194040000</a>	Klippon TB (Terminal Box), Mounting plate, Height: 859 mm, Width:
GTIN (EAN)	4050118028638	549 mm, Depth: 12 mm, Material: Sheet steel, galvanized, silver
Qty.	1 ST	
Type	KTB MOPL 9161 S2N	Version
Order No.	<a href="#">1193910000</a>	Klippon TB (Terminal Box), Mounting plate, Height: 859 mm, Width:
GTIN (EAN)	4050118028522	549 mm, Depth: 12 mm, Material: Stainless steel 1.4301 (304),
Qty.	1 ST	untreated, silver
Type	KTB MOPL 9161 MSZN H	Version
Order No.	<a href="#">2022740000</a>	Klippon TB (Terminal Box), Mounting plate, prepunched, Height:
GTIN (EAN)	4050118403299	859 mm, Width: 549 mm, Depth: 12 mm, Material: Sheet steel,
Qty.	1 ST	galvanized, silver
Type	KTB MOPL 9161 S2N H	Version
Order No.	<a href="#">1257760000</a>	Klippon TB (Terminal Box), Mounting plate, prepunched, Height: 859
GTIN (EAN)	4050118049343	mm, Width: 549 mm, Depth: 12 mm, Material: Stainless steel 1.4301
Qty.	1 ST	(304), untreated, silver

#### Gland plates without earthing studs



Integrate, expand and customise: The ideal expansion for every application

The consistent structure of accessories for the new Klippon® TB enclosure range means that you can easily adapt the enclosure to the specific requirements of each application.

Flange plates

Flange plates in two thicknesses, for easy replacement of pre-assembl

#### General ordering data

Type	KTB GP XX6115 AB S4 3MM	Version
Order No.	<a href="#">1281270000</a>	Klippon TB (Terminal Box), flange plate, straight, Height: 604 mm,
GTIN (EAN)	4050118071832	Width: 117 mm, Depth: 3 mm, Gland plates: top, Bottom, Material:
Qty.	1 ST	Stainless steel 1.4404, electropolished, silver

## KTB MH 916115 S4E1

**Weidmüller Interface GmbH & Co. KG**  
 Klingenbergstraße 26  
 D-32758 Detmold  
 Germany

[www.weidmueller.com](http://www.weidmueller.com)

## Accessories

### Gland plates made out of stainless steel - 6 mm



Integrate, expand and customise: The ideal expansion for every application

The consistent structure of accessories for the new Klippon® TB enclosure range means that you can easily adapt the enclosure to the specific requirements of each application.

Flange plates

Flange plates in two thicknesses, for easy replacement of pre-assembl

#### General ordering data

Type	KTB GP XX6115 AB S4 6MM	Version
Order No.	<a href="#">1256710000</a>	Klippon TB (Terminal Box), flange plate, straight, Height: 604 mm,
GTIN (EAN)	4050118095913	Width: 117 mm, Depth: 6 mm, Gland plates: top, Bottom, Material:
Qty.	1 ST	Stainless steel 1.4404, electropolished, silver

### Gland plates with earthing studs



Integrate, expand and customise: The ideal expansion for every application

The consistent structure of accessories for the new Klippon® TB enclosure range means that you can easily adapt the enclosure to the specific requirements of each application.

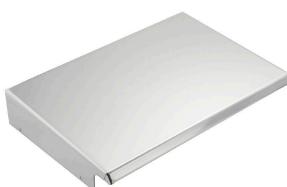
Flange plates

Flange plates in two thicknesses, for easy replacement of pre-assembl

#### General ordering data

Type	KTB GP 916115 AB S4 PE	Version
Order No.	<a href="#">2024150000</a>	Klippon TB (Terminal Box), flange plate, Height: 604 mm, Width: 117
GTIN (EAN)	4050118404296	mm, Depth: 3 mm, Gland plates: top, Bottom, Material: Stainless steel
Qty.	1 ST	1.4404, electropolished, silver

### Stainless steel 1.4301



Integrate, expand and customise: The ideal expansion for every application

The consistent structure of accessories for the new Klippon® TB enclosure range means that you can easily adapt the enclosure to the specific requirements of each application.

Rain Covers

The rain cover provides an ideal, additional level of protection for the enclosure if it is installed in unusual climatic zones with, for instance, very heavy rainfall or extreme levels of direct sunlight.

# **KTB MH 916115 S4E1**

**Weidmüller Interface GmbH & Co. KG**

Klingenbergstraße 26

D-32758 Detmold

Germany

[www.weidmueller.com](http://www.weidmueller.com)

## **Accessories**

### **General ordering data**

Type	KTB RNHD 916115 R	Version
Order No.	<a href="#">1281550000</a>	Klippon TB (Terminal Box), Rain hood, Height: 53.4 mm, Width: 615
GTIN (EAN)	4050118071979	mm, Depth: 160.5 mm, Material: Stainless steel 1.4301, Mirror
Qty.	1 ST	polished, silver

### **Type label holder**



Integrate, expand and customise: The ideal expansion for every application

The consistent structure of accessories for the new Klippon® TB enclosure range means that you can easily adapt the enclosure to the specific requirements of each application.

Nameplate holders

There are a variety of designed label holders available for prominent display as required and for additional nameplates as needed.

### **General ordering data**

Type	TPSDHA KTB 100X25 S2 2R	Version
Order No.	<a href="#">1257640000</a>	Klippon TB (Terminal Box), Ratings plate holder, Riveted, Height:
GTIN (EAN)	4050118070354	25 mm, Width: 141 mm, Depth: 16.5 mm, Material: Stainless steel
Qty.	1 ST	1.4301, Mirror polished, silver
Type	TPSDHA KTB 130X50 S2 R	Version
Order No.	<a href="#">1283450000</a>	Klippon TB (Terminal Box), Ratings plate holder, Riveted, Height:
GTIN (EAN)	4050118073621	50 mm, Width: 171 mm, Depth: 16.5 mm, Material: Stainless steel
Qty.	1 ST	1.4301, Mirror polished, silver
Type	TPSDHA KTB 70X70M3 S2 R	Version
Order No.	<a href="#">1279320000</a>	Klippon TB (Terminal Box), Ratings plate holder, Riveted, Height: 70
GTIN (EAN)	4050118070101	mm, Width: 70 mm, Depth: 20 mm, Material: Stainless steel 1.4301,
Qty.	1 ST	Mirror polished, silver



# KTB MH 916115 S4E1

**Weidmüller Interface GmbH & Co. KG**

 Klingenbergstraße 26  
 D-32758 Detmold  
 Germany

[www.weidmueller.com](http://www.weidmueller.com)

## Accessories

### Installation material



Integrate, expand and customise - the perfect supplement to every application

The fully structured range of system accessories for the new Klippon® TB enclosure series allows you to easily adapt the enclosures to meet the specific requirements of every application.

Mounting hardware kits

Mounting hardware kits are available for quick and easy installation of type label holders, document holders and rain hoods.

The label fastening set – SD is required to install a plastic (Trafolyte) ID or type label. With the aid of this set can you mount the ID or type label directly on the enclosure cover. The label fastening set has been specially developed for this purpose. Only by using this fastening set can you ensure that there will be no leaks into the enclosure or damage to the label.

The universal fastening set – TPSD has been developed to enable secure and quick installation of type label holders, rain covers or document holders, for example. By using this fastening set, the risk of leaks can be minimised, if not avoided.

### General ordering data

Type	SD FIXING SET	Version
Order No.	<a href="#">1285200000</a>	Klippon TB (Terminal Box), Identification plate fixing set, Height: 12
GTIN (EAN)	4050118075472	mm, Width: 12 mm, Depth: 16.4 mm, Material: Stainless steel, rust-
Qty.	1 ST	proof, untreated, silver
Type	TPSD FIXING SET KTB	Version
Order No.	<a href="#">1252190000</a>	Klippon TB (Terminal Box), Type plate fixings set, Material: Stainless
GTIN (EAN)	4050118043969	steel, rust-proof, untreated, silver
Qty.	20 ST	

### Earthing stud



Integrate, expand and customise: The ideal expansion for every application

The consistent structure of accessories for the new Klippon® TB enclosure range means that you can easily adapt the enclosure to the specific requirements of each application.

Earthing bolt

Earthing bolts to exchange as a complete component in two versions – brass and stainless steel.

### General ordering data

Type	PEBZ M10 KTB BR SET	Version
Order No.	<a href="#">1192680000</a>	Klippon TB (Terminal Box), Earthing stud, Miscellaneous, Height: 21
GTIN (EAN)	4032248974641	mm, Width: 21 mm, Depth: 48.7 mm, Material: Brass, untreated,
Qty.	1 ST	silver

## KTB MH 916115 S4E1

**Weidmüller Interface GmbH & Co. KG**

 Klingenbergstraße 26  
 D-32758 Detmold  
 Germany

[www.weidmueller.com](http://www.weidmueller.com)

## Accessories

Type	PEBZ M10 KTB S4 SET	Version
Order No.	<a href="#">1192690000</a>	Klippon TB (Terminal Box), Earthing stud, Miscellaneous, Height:
GTIN (EAN)	4032248974658	21 mm, Width: 21 mm, Depth: 48.7 mm, Material: Stainless steel
Qty.	1 ST	1.4404, untreated, silver

## Document holders



Integrate, expand and customise - the perfect supplement to every application

The fully structured range of system accessories for the new Klippon® TB enclosure series allows you to easily adapt the enclosures to meet the specific requirements of every application.

Document holders

Document holders for the proper storage of documents in the enclosure

## General ordering data

Type	DOHA KTB A6 S2 R	Version
Order No.	<a href="#">1252780000</a>	Klippon TB (Terminal Box), Document holders, Riveted, Height:
GTIN (EAN)	4050118045512	110 mm, Width: 130 mm, Depth: 20 mm, Material: Stainless steel
Qty.	1 ST	1.4301, Mirror polished, silver
Type	DOHA KTB A5 S2 R	Version
Order No.	<a href="#">1252750000</a>	Klippon TB (Terminal Box), Document holders, Riveted, Height:
GTIN (EAN)	4050118045390	150 mm, Width: 180 mm, Depth: 20 mm, Material: Stainless steel
Qty.	1 ST	1.4301, Mirror polished, silver
Type	DOHA KTB A4 S2 R	Version
Order No.	<a href="#">1252730000</a>	Klippon TB (Terminal Box), Document holders, Riveted, Height:
GTIN (EAN)	4050118045383	200 mm, Width: 240 mm, Depth: 20 mm, Material: Stainless steel
Qty.	1 ST	1.4301, Mirror polished, silver

## Grounding strap

The fully structured range of system accessories for the new Klippon® TB enclosure series allows you to easily adapt the enclosures to meet the specific requirements of every application. The following options are available:

- Closure Elements
- Document holders
- Earthing stud
- Gland plates
- Installation material
- Mounting plates
- Rain hoods
- Spacer
- Terminal rails
- Type label holder

## General ordering data

Type	PECD WIRE 6/200/D6 SET	Version
Order No.	<a href="#">2475490000</a>	Klippon TB (Terminal Box), Grounding strap, Sscrewed, Material: Steel,
GTIN (EAN)	4050118487206	Green/yellow
Qty.	1 ST	

## KTB MH 916115 S4E1

**Weidmüller Interface GmbH & Co. KG**  
Klingenbergstraße 26  
D-32758 Detmold  
Germany

[www.weidmueller.com](http://www.weidmueller.com)

## Accessories

### Stainless steel 1.4404 (316L)



Integrate, expand and customise: The ideal expansion for every application

The consistent structure of accessories for the new Klippon® TB enclosure range means that you can easily adapt the enclosure to the specific requirements of each application.

#### Rain Covers

The rain cover provides an ideal, additional level of protection for the enclosure if it is installed in unusual climatic zones with, for instance, very heavy rainfall or extreme levels of direct sunlight.

### General ordering data

Type	KTB RNHD XX6115 S4E R	Version
Order No.	<a href="#">1314320000</a>	Klippon TB (Terminal Box), Rain hood, Height: 53.4 mm, Width: 615
GTIN (EAN)	4050118117530	mm, Depth: 160.5 mm, Material: Stainless steel 1.4404 (316L),
Qty.	1 ST	electropolished, silver

### Depth 7.5 mm



Integrate, expand and customise: The ideal expansion for every application

The consistent structure of accessories for the new Klippon® TB enclosure range means that you can easily adapt the enclosure to the specific requirements of each application.

#### Terminal rails

The mounting rails are available in two sizes for mounting DIN rails (e.g. electronics, terminals) components in the enclosures.

### General ordering data

Type	TS35X7.5 ST KTB9161 HOR	Version
Order No.	<a href="#">8000006729</a>	Rail, TS 35, TS 35 x 7.5, Width: 535 mm, without slot, Steel,
GTIN (EAN)	4050118653021	galvanized, chromium-plated
Qty.	20 ST	
Type	TS35X7.5 ST KTB9161 VER	Version
Order No.	<a href="#">8000006718</a>	Rail, TS 35, TS 35 x 7.5, Width: 845 mm, without slot, Steel,
GTIN (EAN)	4050118652963	galvanized, chromium-plated
Qty.	20 ST	

### Mounting plates



Mounting plates, with and without hole patterns, for longitudinal and transverse mounting of DIN mounting rails or components directly onto the mounting plate.

# KTB MH 916115 S4E1

**Weidmüller Interface GmbH & Co. KG**  
 Klingenbergstraße 26  
 D-32758 Detmold  
 Germany

www.weidmueller.com

## Accessories

### General ordering data

Type	GFSC M5X10 TX20 SET	Version
Order No.	<a href="#">1274150000</a>	Klippon EB (Essential Box), Mounting screw, Height: 13.3 mm, Width:
GTIN (EAN)	4050118063820	8.5 mm, Depth: 8.5 mm, Material: Steel, galvanized, galvanic zinc
Qty.	1 ST	plated and passivated, silver

### Depth 15 mm



Integrate, expand and customise: The ideal expansion for every application

The consistent structure of accessories for the new Klippon® TB enclosure range means that you can easily adapt the enclosure to the specific requirements of each application.

Terminal rails

The mounting rails are available in two sizes for mounting DIN rails (e.g. electronics, terminals) components in the enclosures.

### General ordering data

Type	TS35X15 ST KTB9161 HOR	Version
Order No.	<a href="#">8000073132</a>	Rail, TS 35, TS 35 x 15, Width: 535 mm, without slot, Steel, galvanic
GTIN (EAN)	4064675340881	zinc plated and passivated
Qty.	20 ST	
Type	TS35X15 ST KTB9161 HOR-C	Version
Order No.	<a href="#">8000073133</a>	Rail, TS 35, TS 35 x 15, Width: 535 mm, without slot, Steel, galvanic
GTIN (EAN)	4064675340898	zinc plated and passivated
Qty.	20 ST	
Type	TS35X15 ST KTB9161 VER	Version
Order No.	<a href="#">8000073134</a>	Rail, TS 35, TS 35 x 15, Width: 845 mm, without slot, Steel, galvanic
GTIN (EAN)	4064675340904	zinc plated and passivated
Qty.	20 ST	
Type	TS35X15 ST KTB9161 VER-C	Version
Order No.	<a href="#">8000073135</a>	Rail, TS 35, TS 35 x 15, Width: 845 mm, without slot, Steel, galvanic
GTIN (EAN)	4064675340911	zinc plated and passivated
Qty.	20 ST	

**KTB MH 916115 S4E1****Weidmüller Interface GmbH & Co. KG**

Klingenbergstraße 26

D-32758 Detmold

Germany

[www.weidmueller.com](http://www.weidmueller.com)**Accessories****Installation material**

Integrate, expand and customise - the perfect supplement to every application

The fully structured range of system accessories for the new Klippon® TB enclosure series allows you to easily adapt the enclosures to meet the specific requirements of every application.

Mounting hardware kits

Mounting hardware kits are available for quick and easy installation of type label holders, document holders and rain hoods.

The label fastening set – SD is required to install a plastic (Trafolyte) ID or type label. With the aid of this set can you mount the ID or type label directly on the enclosure cover. The label fastening set has been specially developed for this purpose. Only by using this fastening set can you ensure that there will be no leaks into the enclosure or damage to the label.

The universal fastening set – TPSD has been developed to enable secure and quick installation of type label holders, rain covers or document holders, for example. By using this fastening set, the risk of leaks can be minimised, if not avoided.

**General ordering data**

Type	FKSC M6X8 D9/SW3	Version
Order No.	<a href="#">0642600000</a>	Klippon TB (Terminal Box), Mounting screw, Material: Steel
GTIN (EAN)	4008190058258	
Qty.	50 ST	