

## KTB MH 553515 S4E0

Weidmüller Interface GmbH & Co. KG

Klingenbergstraße 26

D-32758 Detmold

Germany

[www.weidmueller.com](http://www.weidmueller.com)

### Similar to illustration



Abbildung ähnlich

The Klippon® TB enclosure range provides excellent performance characteristics, even under the most difficult environmental conditions. In addition, it complies with the stricter requirements of potentially explosive atmospheres found specifically in the process or power generation industries. The Klippon® TB MH enclosure range offers further improvements to a product line that is already successfully leading the market.

The Klippon® TB MH enclosure range has the following advantages:

- Available in 15 sizes and 3 standard depths
- Equipped with up to 4 gland plates
- The gasket is protected against compression
- Completely removable padlock tab
- Cover lock outside the sealed zone
- Improved temperature performance
- IP66/IP67 protection
- Completely removable lid – without a tool
- Earthing stud in the cover and base of the enclosure
- Welded mounting feet
- International approvals

### General ordering data

Version	Klippon TB MH (Terminal Box - Multi Hinge), Empty enclosure, stainless steel enclosure, Height: 550 mm, Width: 350 mm, Depth: 150 mm, Material: Stainless steel 1.4404 (316L), electropolished, silver
Order No.	<a href="#">1195200000</a>
Type	KTB MH 553515 S4E0
GTIN (EAN)	4032248978168
Qty.	1 ST

**KTB MH 553515 S4E0**

**Weidmüller Interface GmbH & Co. KG**  
 Klingenbergstraße 26  
 D-32758 Detmold  
 Germany

www.weidmueller.com

**Technical data**

**Approvals**

Approvals



ROHS	Conform
UL File Number Search	<a href="#">UL Website</a>
Certificate no. (cULus)	E243298

**Dimensions and weights**

Depth	150 mm	Depth (inches)	5.9055 inch
Height	550 mm	Height (inches)	21.6535 inch
Width	350 mm	Width (inches)	13.7795 inch
Mounting dimension - height	350 mm	Mounting dimension - width	376 mm
Net weight	10960 g		

**Temperatures**

Operating temperature	-60 °C...135 °C	Note: room temperature (service)	Limited to IP66 protection when used in temperatures greater than 105 °C.
-----------------------	-----------------	----------------------------------	---

**Environmental Product Compliance**

RoHS Compliance Status	Compliant with exemption
RoHS Exemption (if applicable/known)	6c
REACH SVHC	Lead 7439-92-1
SCIP	8d5fcdfe-c58e-44e1-a6b4-74d2bbccc9dd

**Cable glands, left**

M63	0	M75	0
M12	42	M50	5
M16	24	M32	7
M25	9	M20	20
M40	6		

**Cable glands, right**

M25	9	M63	0
M75	0	M16	24
M40	6	M50	5
M32	7	M20	20
M12	42		

**KTB MH 553515 S4E0**
**Weidmüller Interface GmbH & Co. KG**

 Klingenbergstraße 26  
 D-32758 Detmold  
 Germany

[www.weidmueller.com](http://www.weidmueller.com)
**Technical data**
**Cable glands, top/bottom**

M20	13	M12	27
M63	0	M40	4
M32	5	M25	6
M50	3	M75	0
M16	15		

**Certificate numbers enclosure**

Certificate No. UL Haz.Loc.	E223792	Declaration of Conformity No. (DoC LVD)	DE PS261X 160412 001ISS03
Certificate No. UL Ord.Loc.	E243298	Certificate No. UL 508A	E223801
Attestation of Conformity No. (AoC)	DE PS261X 160309 001ISS06	Certificate No. UL Terminal Box	E223792
Certificate No. Electronic Box (NEPSI)	2020322303003289	Certificate no. empty enclosure (ECAS)	21-09-25241/ E21-09-053807
Certificate no. Terminal Box (KOSHA)	16-AV4BO-0245X	Certificate no. empty enclosure (INMETRO)	LMP 21.0016U
Certificate No. (DNV)	TAE000013S	Certificate no. Terminal Box (AEx)	E223792
Certificate No. (CCOE)	P461058_1	Certificate no. Terminal Box (ATEX)	IBExU14ATEX1050
Certificate no. empty enclosure (ATEX)	IBExU14ATEX1028 U	Certificate no. Terminal Box (INMETRO)	LMP 21.0017
Certificate no. (INMETRO)	IEX13.0006U	Certificate no. Terminal Box (IECEX)	IECEXIBE14.0013
Certificate no. empty enclosure (IECEX)	IECEX IBE 14.0004U	Certificate No. (IECEX)	IECEXPTB11.0071
Certificate No. (ATEX)	PTB11ATEX2019	Approval conditions	ATEX, CCoE, DNV, IECEX, INMETRO, KC, NEPSI, CCC, UL AEx Class Div., UL AEx Class Zone, cULus
Certificate no. (cULus)	E243298		

**General information**

Material thickness of cover	1.5 mm	Material thickness of enclosure	1.5 mm
Operating temperature, max.	135 °C	Operating temperature, min.	-60 °C
Lid attachment	4 hinges and M6 hex-head slotted screws SW10	Standards	DIN EN 62208 - Empty enclosure standard, DIN EN 61373 Class 1B**, DIN EN 15085-2, EN 60079-0, EN 60079-7, EN 60079-31, IEC 60079-0, IEC 60079-7, IEC 60079-31
Surface finish	electropolished	Impact resistance	7 J ATEX version, 10 J version standard
AF size	10 mm	Protection degree	IP66, IP67
Material	Stainless steel 1.4404 (316L)	Seal material	Silicone
Torque for lid screws	2.5 Nm	Integral fixing	4, 6 or 9 stud bolts M6 inner (female) thread
Enclosure attachment	4 welded-on mounting feet with 11 mm holes (2 slotted feet and 2 cross-shaped feet)	Note: protection class	If used in temperature ranges above 105 °C, IP protection is limited to IP 66.
Seal material of flange plate	Silicone	Protection class (UL)	Type 3, Type 4X, Type 12
Number of lid screws	8	Dimension of box	550x710x240
Access opening: width	291 mm	Opening angle lid	130.00 °
Overall dimensions	550 x 401 x 165	Flange plate	No
Max. payload	77 kg	Lid	Yes
Access opening: height	497 mm	Position PE bolts	Enclosure side C
Areas of use	Explosive risk zone, Process industry, Oil and		

**KTB MH 553515 S4E0**

**Weidmüller Interface GmbH & Co. KG**  
 Klingenbergstraße 26  
 D-32758 Detmold  
 Germany

www.weidmueller.com

**Technical data**

gas industry, Chemical  
 industry, Offshore,  
 Onshore

**Housing earth**

Earth, enclosure, cover	Welded-on M6 stainless-steel earth stud in enclosure body and lid.	Earth, enclosure, external	Continuous M10 earth stud in body enclosure
Earth, enclosure, internal	Welded-on M6 stainless-steel earth stud in enclosure body and lid.		

**horizontal assembly**

WDU 10 / ZDU 10	3x24	WDU 16 / ZDU 16	3x20
WDU 2,5 / ZDU 2,5 / IDU 2,5	4x48	WDU 35 / ZDU 35	2x15
WDU 4 / ZDU 4	4x40	WDU 6 / ZDU 6	4x30

**vertical assembly**

WDU 10 / ZDU 10	2x45	WDU 16 / ZDU 16	1x37
WDU 2,5 / ZDU 2,5 / IDU 2,5	2x89	WDU 35 / ZDU 35	1x28
WDU 4 / ZDU 4	2x73	WDU 6 / ZDU 6	2x55

**Classifications**

ETIM 6.0	EC002503	ETIM 7.0	EC002503
ETIM 8.0	EC002503	ETIM 9.0	EC002503
ETIM 10.0	EC002503	ECLASS 9.0	27-18-05-02
ECLASS 9.1	27-18-05-02	ECLASS 10.0	27-18-05-02
ECLASS 11.0	27-18-05-02	ECLASS 12.0	27-18-05-02
ECLASS 13.0	27-18-05-02	ECLASS 14.0	27-18-05-02
ECLASS 15.0	27-18-05-02		

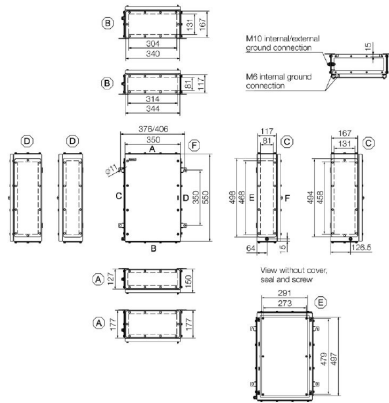
**KTB MH 553515 S4E0**

**Weidmüller Interface GmbH & Co. KG**  
Klingenbergstraße 26  
D-32758 Detmold  
Germany

**Drawings**

[www.weidmueller.com](http://www.weidmueller.com)

**Dimensioned drawing**



## KTB MH 553515 S4E0

**Weidmüller Interface GmbH & Co. KG**

Klingenbergstraße 26  
D-32758 Detmold  
Germany

www.weidmueller.com

## Accessories

### 550 x 350mm



Integrate, expand and customise: The ideal expansion for every application

The consistent structure of accessories for the new Klippon® TB enclosure range means that you can easily adapt the enclosure to the specific requirements of each application.

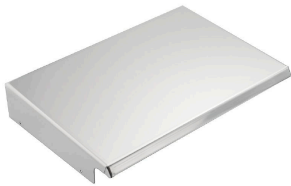
**Mounting plates**

Mounting plates, with and without hole patterns, for longitudinal and transverse mounting of DIN mounting rails or components directly onto the mounting plate.

#### General ordering data

Type	KTB MOPL 5535 MSZN	Version
Order No.	<a href="#">1194010000</a>	Klippon TB (Terminal Box), Mounting plate, Height: 495 mm, Width: 289 mm, Depth: 1.5 mm, Material: Sheet steel, galvanized, silver
GTIN (EAN)	4050118028614	
Qty.	1 ST	
Type	KTB MOPL 5535 S2N	Version
Order No.	<a href="#">1193880000</a>	Klippon TB (Terminal Box), Mounting plate, Height: 495 mm, Width: 289 mm, Depth: 1.5 mm, Material: Stainless steel 1.4301 (304), untreated, silver
GTIN (EAN)	4050118028485	
Qty.	1 ST	
Type	KTB MOPL 5535 MSZN H	Version
Order No.	<a href="#">2022650000</a>	Klippon TB (Terminal Box), Mounting plate, prepunched, Height: 495 mm, Width: 289 mm, Depth: 1.5 mm, Material: Sheet steel, galvanized, silver
GTIN (EAN)	4050118403701	
Qty.	1 ST	
Type	KTB MOPL 5535 S2N H	Version
Order No.	<a href="#">1257720000</a>	Klippon TB (Terminal Box), Mounting plate, prepunched, Height: 495 mm, Width: 289 mm, Depth: 1.5 mm, Material: Stainless steel 1.4301 (304), untreated, silver
GTIN (EAN)	4050118049091	
Qty.	1 ST	

### Stainless steel 1.4301



Integrate, expand and customise: The ideal expansion for every application

The consistent structure of accessories for the new Klippon® TB enclosure range means that you can easily adapt the enclosure to the specific requirements of each application.

**Rain Covers**

The rain cover provides an ideal, additional level of protection for the enclosure if it is installed in unusual climatic zones with, for instance, very heavy rainfall or extreme levels of direct sunlight.

#### General ordering data

Type	KTB RNHD 5535 15 R	Version
Order No.	<a href="#">1281490000</a>	Klippon TB (Terminal Box), Rain hood, Height: 53.4 mm, Width: 355 mm, Depth: 160.5 mm, Material: Stainless steel 1.4301, Mirror polished, silver
GTIN (EAN)	4050118072310	
Qty.	1 ST	

## KTB MH 553515 S4E0

**Weidmüller Interface GmbH & Co. KG**  
 Klingenbergstraße 26  
 D-32758 Detmold  
 Germany

www.weidmueller.com

## Accessories

### Type label holder



Integrate, expand and customise: The ideal expansion for every application

The consistent structure of accessories for the new Klippon® TB enclosure range means that you can easily adapt the enclosure to the specific requirements of each application.

**Nameplate holders**

There are a variety of designed label holders available for prominent display as required and for additional nameplates as needed.

### General ordering data

Type	TPSDHA KTB 100X25 S2 2R	Version
Order No.	<a href="#">1257640000</a>	Klippon TB (Terminal Box), Ratings plate holder, Riveted, Height: 25 mm, Width: 141 mm, Depth: 16.5 mm, Material: Stainless steel
GTIN (EAN)	4050118070354	
Qty.	1 ST	1.4301, Mirror polished, silver
Type	TPSDHA KTB 130X50 S2 R	Version
Order No.	<a href="#">1283450000</a>	Klippon TB (Terminal Box), Ratings plate holder, Riveted, Height: 50 mm, Width: 171 mm, Depth: 16.5 mm, Material: Stainless steel
GTIN (EAN)	4050118073621	
Qty.	1 ST	1.4301, Mirror polished, silver
Type	TPSDHA KTB 70X70M3 S2 R	Version
Order No.	<a href="#">1279320000</a>	Klippon TB (Terminal Box), Ratings plate holder, Riveted, Height: 70 mm, Width: 70 mm, Depth: 20 mm, Material: Stainless steel 1.4301, Mirror polished, silver
GTIN (EAN)	4050118070101	
Qty.	1 ST	

### Installation material



Integrate, expand and customise - the perfect supplement to every application

The fully structured range of system accessories for the new Klippon® TB enclosure series allows you to easily adapt the enclosures to meet the specific requirements of every application.

**Mounting hardware kits**

Mounting hardware kits are available for quick and easy installation of type label holders, document holders and rain hoods.

The label fastening set – SD is required to install a plastic (Trafolyte) ID or type label. With the aid of this set can you mount the ID or type label directly on the enclosure cover. The label fastening set has been specially developed for this purpose. Only by using this fastening set can you ensure that there will be no leaks into the enclosure or damage to the label.

The universal fastening set – TPSD has been developed to enable secure and quick installation of type label holders, rain covers or document holders, for example. By using this fastening set, the risk of leaks can be minimised, if not avoided.

**KTB MH 553515 S4E0**

**Weidmüller Interface GmbH & Co. KG**  
 Klingenbergstraße 26  
 D-32758 Detmold  
 Germany

www.weidmueller.com

**Accessories**

**General ordering data**

Type	SD FIXING SET	Version
Order No.	<a href="#">1285200000</a>	Klippon TB (Terminal Box), Identification plate fixing set, Height: 12 mm, Width: 12 mm, Depth: 16.4 mm, Material: Stainless steel, rust-proof, untreated, silver
GTIN (EAN)	4050118075472	
Qty.	1 ST	
Type	TPSD FIXING SET KTB	Version
Order No.	<a href="#">1252190000</a>	Klippon TB (Terminal Box), Type plate fixings set, Material: Stainless steel, rust-proof, untreated, silver
GTIN (EAN)	4050118043969	
Qty.	20 ST	

**Earthing stud**



**Integrate, expand and customise: The ideal expansion for every application**  
 The consistent structure of accessories for the new Klippon® TB enclosure range means that you can easily adapt the enclosure to the specific requirements of each application.  
**Earthing bolt**  
 Earthing bolts to exchange as a complete component in two versions – brass and stainless steel.

**General ordering data**

Type	PEBZ M10 KTB BR SET	Version
Order No.	<a href="#">1192680000</a>	Klippon TB (Terminal Box), Earthing stud, Miscellaneous, Height: 21 mm, Width: 21 mm, Depth: 48.7 mm, Material: Brass, untreated, silver
GTIN (EAN)	4032248974641	
Qty.	1 ST	
Type	PEBZ M10 KTB S4 SET	Version
Order No.	<a href="#">1192690000</a>	Klippon TB (Terminal Box), Earthing stud, Miscellaneous, Height: 21 mm, Width: 21 mm, Depth: 48.7 mm, Material: Stainless steel
GTIN (EAN)	4032248974658	
Qty.	1 ST	1.4404, untreated, silver

**Document holders**



**Integrate, expand and customise - the perfect supplement to every application**  
 The fully structured range of system accessories for the new Klippon® TB enclosure series allows you to easily adapt the enclosures to meet the specific requirements of every application.  
**Document holders**  
 Document holders for the proper storage of documents in the enclosure

**General ordering data**

Type	DOHA KTB A6 S2 R	Version
Order No.	<a href="#">1252780000</a>	Klippon TB (Terminal Box), Document holders, Riveted, Height: 110 mm, Width: 130 mm, Depth: 20 mm, Material: Stainless steel
GTIN (EAN)	4050118045512	
Qty.	1 ST	1.4301, Mirror polished, silver
Type	DOHA KTB A5 S2 R	Version
Order No.	<a href="#">1252750000</a>	Klippon TB (Terminal Box), Document holders, Riveted, Height: 150 mm, Width: 180 mm, Depth: 20 mm, Material: Stainless steel
GTIN (EAN)	4050118045390	
Qty.	1 ST	1.4301, Mirror polished, silver



## KTB MH 553515 S4E0

**Weidmüller Interface GmbH & Co. KG**  
 Klingenbergstraße 26  
 D-32758 Detmold  
 Germany

www.weidmueller.com

## Accessories

Type	DOHA KTB A4 S2 R	Version
Order No.	<a href="#">1252730000</a>	Klippon TB (Terminal Box), Document holders, Riveted, Height:
GTIN (EAN)	4050118045383	200 mm, Width: 240 mm, Depth: 20 mm, Material: Stainless steel
Qty.	1 ST	1.4301, Mirror polished, silver

## Grounding strap

The fully structured range of system accessories for the new Klippon® TB enclosure series allows you to easily adapt the enclosures to meet the specific requirements of every application. The following options are available:

- Closure Elements
- Document holders
- Earthing stud
- Gland plates
- Installation material
- Mounting plates
- Rain hoods
- Spacer
- Terminal rails
- Type label holder

## General ordering data

Type	PECD WIRE 6/200/D6 SET	Version
Order No.	<a href="#">2475490000</a>	Klippon TB (Terminal Box), Grounding strap, Ssrewed, Material: Steel,
GTIN (EAN)	4050118487206	Green/yellow
Qty.	1 ST	

## Stainless steel 1.4404 (316L)



**Integrate, expand and customise:** The ideal expansion for every application

The consistent structure of accessories for the new Klippon® TB enclosure range means that you can easily adapt the enclosure to the specific requirements of each application.

### Rain Covers

The rain cover provides an ideal, additional level of protection for the enclosure if it is installed in unusual climatic zones with, for instance, very heavy rainfall or extreme levels of direct sunlight.

## General ordering data

Type	KTB RNHD 553515 S4E R	Version
Order No.	<a href="#">1314240000</a>	Klippon TB (Terminal Box), Rain hood, Height: 53.4 mm, Width: 355
GTIN (EAN)	4050118117271	mm, Depth: 160.5 mm, Material: Stainless steel 1.4404 (316L),
Qty.	1 ST	electropolished, silver

## KTB MH 553515 S4E0

**Weidmüller Interface GmbH & Co. KG**  
 Klingenbergstraße 26  
 D-32758 Detmold  
 Germany

www.weidmueller.com

## Accessories

### Depth 7.5 mm



Integrate, expand and customise: The ideal expansion for every application

The consistent structure of accessories for the new Klippon® TB enclosure range means that you can easily adapt the enclosure to the specific requirements of each application.

Terminal rails

The mounting rails are available in two sizes for mounting DIN rails (e.g. electronics, terminals) components in the enclosures.

#### General ordering data

Type	TS35X7.5 ST KTB5535 HOR	Version
Order No.	<a href="#">8000006726</a>	Rail, TS 35, TS 35 x 7.5, Width: 289 mm, without slot, Steel, galvanized, chromium-plated
GTIN (EAN)	4050118652994	
Qty.	20 ST	

Type	TS35X7.5 ST KTB5535 VER	Version
Order No.	<a href="#">8000006715</a>	Rail, TS 35, TS 35 x 7.5, Width: 495 mm, without slot, Steel, galvanized, chromium-plated
GTIN (EAN)	4050118652932	
Qty.	20 ST	

### Mounting plates



Mounting plates, with and without hole patterns, for longitudinal and transverse mounting of DIN mounting rails or components directly onto the mounting plate.

#### General ordering data

Type	GFSC M5X10 TX20 SET	Version
Order No.	<a href="#">1274150000</a>	Klippon EB (Essential Box), Mounting screw, Height: 13.3 mm, Width: 8.5 mm, Depth: 8.5 mm, Material: Steel, galvanized, galvanic zinc plated and passivated, silver
GTIN (EAN)	4050118063820	
Qty.	1 ST	

### Depth 15 mm



Integrate, expand and customise: The ideal expansion for every application

The consistent structure of accessories for the new Klippon® TB enclosure range means that you can easily adapt the enclosure to the specific requirements of each application.

Terminal rails

The mounting rails are available in two sizes for mounting DIN rails (e.g. electronics, terminals) components in the enclosures.

## KTB MH 553515 S4E0

**Weidmüller Interface GmbH & Co. KG**  
 Klingenbergstraße 26  
 D-32758 Detmold  
 Germany

www.weidmueller.com

## Accessories

## General ordering data

Type	TS35X15 ST KTB5535 HOR	Version
Order No.	<a href="#">8000073122</a>	Rail, TS 35, TS 35 x 15, Width: 289 mm, without slot, Steel, galvanic
GTIN (EAN)	4064675340775	zinc plated and passivated
Qty.	20 ST	
Type	TS35X15 ST KTB5535 HOR-C	Version
Order No.	<a href="#">8000073123</a>	Rail, TS 35, TS 35 x 15, Width: 289 mm, without slot, Steel, galvanic
GTIN (EAN)	4064675340782	zinc plated and passivated
Qty.	20 ST	
Type	TS35X15 ST KTB5535 VER	Version
Order No.	<a href="#">8000073124</a>	Rail, TS 35, TS 35 x 15, Width: 495 mm, without slot, Steel, galvanic
GTIN (EAN)	4064675340799	zinc plated and passivated
Qty.	20 ST	

## Installation material



Integrate, expand and customise - the perfect supplement to every application

The fully structured range of system accessories for the new Klippon® TB enclosure series allows you to easily adapt the enclosures to meet the specific requirements of every application.

Mounting hardware kits

Mounting hardware kits are available for quick and easy installation of type label holders, document holders and rain hoods.

The label fastening set – SD is required to install a plastic (Trafolyte) ID or type label. With the aid of this set can you mount the ID or type label directly on the enclosure cover. The label fastening set has been specially developed for this purpose. Only by using this fastening set can you ensure that there will be no leaks into the enclosure or damage to the label.

The universal fastening set – TPSD has been developed to enable secure and quick installation of type label holders, rain covers or document holders, for example. By using this fastening set, the risk of leaks can be minimised, if not avoided.

## General ordering data

Type	FKSC M6X8 D9/SW3	Version
Order No.	<a href="#">0642600000</a>	Klippon TB (Terminal Box), Mounting screw, Material: Steel
GTIN (EAN)	4008190058258	
Qty.	50 ST	