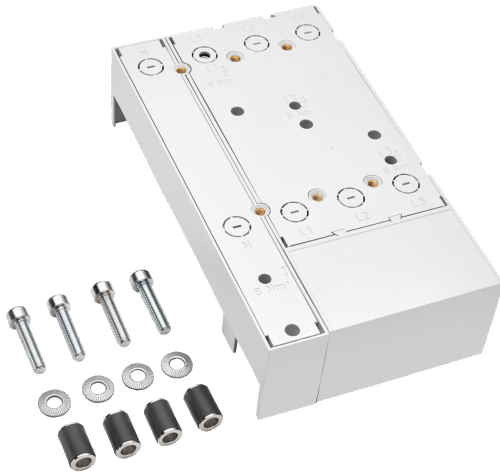


busbar adapter 250 A, 4-pole (32642)



The picture may show a similar product.

Description

Part No.: **32642**000

EQUES[®] 60Classic

busbar adapter 250 A, 4-pole

140 x 251

N on left side

connection to the system top or bottom

for Schneider Electric NSX100, NSX160, NSX250

for busbars 12, 15, 20, 25, 30 x 5, 10 and section busbars

System

60Classic

Product group 05

Subgroup 36

pack size 1

EAN 4021267326425

catalog page 2020 : 3.14

ECLASS 6.1 27370304
ECLASS 7.1 27370304
ETIM 4.0 EC001531
ETIM 5.0 EC001531

Approvals

Standards

IEC 61439-1:2011
UL 508

Approvals

CSA, UL, DNV GL



for UL feeder circuits >250V

type number: 60250.1-L

UL file: E123577, UL category (for USA): NMTR <https://www.ul.com>

UL file: E123577, UL category (for Canada): NMTR7 <https://www.ul.com>

CSA file: 110285, CSA class: 3211-37 <https://directories.csa-international.org>

CCC approval: no certification required

Technical data

Details IEC

Standards

IEC 61439-1:2011

Electrical data IEC

Rated current (IEC): 250 A

rated voltage (IEC) AC: 690 V

rated isolation voltage U_i AC: 800 V

rated surge voltage U_{imp} : 6 kV

short-circuit withstandability: the short-circuit capacity of the combination of adapter and MCCB depends on the MCCB

power dissipation of the article:

The power dissipation at a typical load of 80 % results to 8.1 W.

(The power dissipation at full load would be 12.6 W.)

Details UL

Standards

UL 508

for UL feeder circuits >250V

Electrical data UL

rated current (UL): 250 A

rated voltage (UL) AC: 600 V

rated frequency (UL): 50 / 60 Hz

SCCR protected max.: 65 kA

SCCR: 25 kA with NSX250 / 600 V AC

65 kA with NSX250 / 480 V AC

50 kA with NSX250 / 600 V AC, max. busbar support distance 400 mm

Mechanical data

W x H x D: 140 x 251 x 63

weight: 118.6 kg/100

poles: 3-pole+N

for busbars: 12, 15, 20, 25, 30 x 5, 10 and section busbars

There must be a clearance of at least 10 mm above the article to remove it from the busbar system.