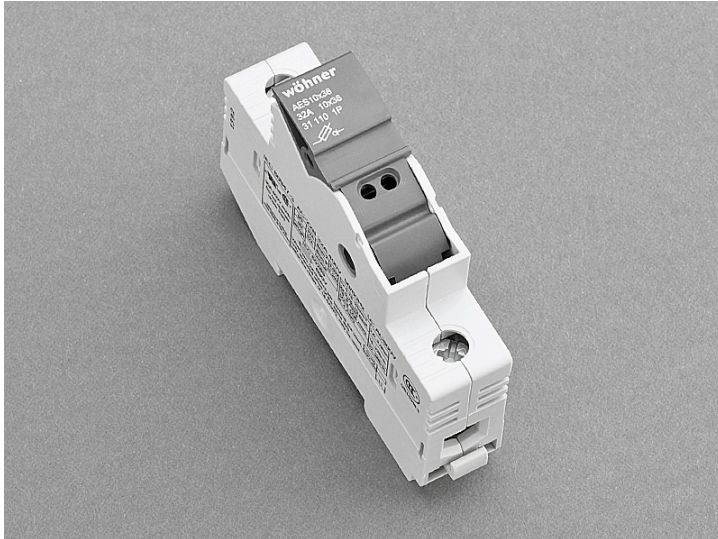


holder for cylindrical fuses (31110)



The picture may show a similar product.

Description

Part No.: **31110**000

AMBUS[®] Panel

holder for cylindrical fuses

10 x 38 / 1P

32 A / 690 V

for mounting rail

System

Panel

Advantages of the product

large clamping range

holder for label

Product group 17

Subgroup 06

pack size 12

EAN 4021267311100

catalog page 2020 : 6.6

ECLASS 6.1 27142190

ECLASS 7.1 27142190

ETIM 4.0 EC002705

ETIM 5.0 EC002705

Approvals

Standards

IEC 60947-1:2020

IEC 60947-3:2020 AC ratings only

UL 4248-1

Approvals

IEC (CB), CSA, UL, CCC



for UL feeder circuits >250V

type number: AES10x38

UL file: E230163, UL category (for USA): IZLT <https://www.ul.com>

UL file: E230163, UL category (for Canada): IZLT7 <https://www.ul.com>

CSA file: 110285, CSA class: 6225-01 <https://directories.csa-international.org>

CCC certificate: 2012010302581751

Technical data

for fuse links size: 10x38

fuse links acc. to standard: IEC / HD 60269-2

permitted power dissipation of the fuse-link: 3 W

Details IEC

Standards

IEC 60947-1:2020

IEC 60947-3:2020 AC ratings only

Electrical data IEC

Rated current (IEC): 32 A
rated voltage (IEC) AC: 690 V

rated isolation voltage U_i AC: 800 V
rated isolation voltage U_i DC: 800 V
rated surge voltage U_{imp} : 6 kV

Utilisation category AC (IEC 60947-3): AC-22B (400V)

cond. short-circuit current with fuses (AC): 100 kA / 400 V (32A)
100 kA / 500 V (25A)
approved with fuse links of operation class: gG

power dissipation of the article:
The power dissipation at a typical load of 80 % results to 0.2 W.
(The power dissipation at full load would be 0.3 W.)

Supplementary data IEC

The following values have been verified with tests under certain conditions. Please ask Wöhner for this conditions before designing your panel.

further utilisation category AC (IEC 60947-3): AC-20B (1000 V) at pollution degree 2
further utilisation category DC (IEC 60947-3): DC-20B (800 V)

A fuse-combination unit acc. to IEC 60947-3 can only be operated at a higher voltage than its rated voltage, if it is used as a fuse-disconnector without breaking capacity, up to its max. rated insulation voltage and labelled as such.

for fuse links as per IEC / EN 60269-2
with permitted rated power dissipations
up to max. 3W for gG/gL
up to max. 1.2W for aM

Details UL

Standards

UL 4248-1

for UL feeder circuits >250V
suitable for field-installed conductors

Electrical data UL

rated current (UL): 30 A
rated voltage (UL) AC: 600 V
rated frequency (UL): 50 / 60 Hz
rated voltage (UL) DC: 600 V
for wires UL: Cu 75°C

SCCR: 100 kA

Mechanical data

W x H x D: 18 x 81 x 58
weight: 5.2 kg/100
poles: 1-pole
Mounting: for mounting rail

degree of protection: IP20
front degree of protection: IP20

Terminal points

cage clamp connection

screw drive:	PZ2
wire stripping:	11 mm
min. cross-section:	0.75 mm ²
max. cross-section:	25 mm ²
Md min.:	2.0 Nm
Md max.:	2.5 Nm

Not suitable for aluminium cables !

min. cross-section UL:	AWG 18
max. cross-section UL:	AWG 4
torque (UL):	18 - 22 lb-in
for wires UL:	Cu 75°C

for applications acc. to IEC / EN :

1 wire:

Cu 0,75 - 25 mm²

2 wires (of same cross-section):

Cu 0,75 - 10 mm²

flexible cables, directly or with wire-end ferrule

(flexible cables of max. cross-section may not fit when using wire-end ferrule)

Md 2,0 - 2,5 Nm / 18 - 22 lb.in.

for applications acc. to UL / CSA :

only Cu cables acc. to UL 486E

1 wire:

AWG 18 - AWG 8, Class B, Md 2,0 - 2,5 Nm / 18 - 22 lb.in.

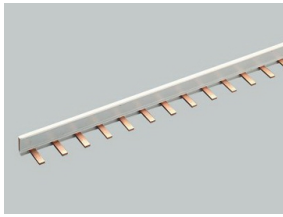
AWG 6 - AWG 4, Class C, Md 2,5 - 3,0 Nm / 22 - 26 lb.in.

2 wires (of identical cross-section):

AWG 18 - AWG 8, Class B, Md 2,0 - 2,5 Nm / 18 - 22 lb.in.

AWG 6, Class C, Md 2,0 - 2,5 Nm / 18 - 22 lb.in.

Accessories



31101000A

comb-type busbar, 1-pole, bridge type, pitch 18 mm
80 A, 1 m long
16 mm²



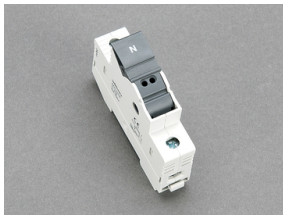
31103000

connection terminal, side connection
6 - 25 mm²
for: 31101, 31102



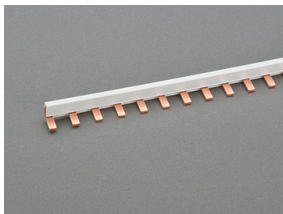
31157000

connection terminal, front connection
6 - 25 mm²
for: 31101, 31102



31258000

AMBUS[®] Panel
N module
10 x 38 / N
32 A / 690 V



31548000

comb-type busbar, 1-pole, bridge type, pitch 18 mm
100 A, 1 m long
25 mm²



31039000

connection terminal, front connection
6 - 35 mm² / AWG 10 - 1/0
for: 31548



31550000

connection terminal, front connection

6 - 35 mm²

for: 31549, 31561