

in-line fuse switch-disconnector 160 A (33234)



The picture may show a similar product.



Description

Part No.: **33234**000

in-line fuse switch-disconnector 160 A

screw M8 / clamp 70 mm²

size 00

for busbars 12, 15, 20, 25, 30 x 5, 10 and section busbars

System

60Classic

Advantages of the product

Self-closing inspection holes are available in the cover.

Product group 12

Subgroup 50

pack size 1

EAN 4021267332341

catalog page 2020 : 3.29

ECLASS 6.1 27142108

ECLASS 7.1 27142108

ETIM 4.0 EC001046

ETIM 5.0 EC001046

Approvals

Standards

IEC 60947-1:2020

IEC 60947-3:2020 AC ratings only

Approvals

IEC (CB) , CCC



type number: SLS-00

CCC certificate: 2004010302117261

Technical data

for fuse links size: NH 000, NH 00
fuse links acc. to standard: IEC / HD 60269-2
permitted power dissipation of the fuse-link: 12 W
requirements for contact parts: Fuse links with silver-plated contact pieces recommended.
For fuse links with nickel-plated contact pieces, a reduction factor of 0.8 is to be observed.

Details IEC

Standards

IEC 60947-1:2020

IEC 60947-3:2020 AC ratings only

Electrical data IEC

Rated current (IEC): 160 A

rated voltage (IEC) AC: 690 V

rated isolation voltage U_i AC: 1000 V

rated surge voltage U_{imp} : 8 kV

Utilisation category AC (IEC 60947-3): AC-22B (690V)
AC-23B (400V)
AC-23B (500V/125A)

Utilisation category DC (IEC 60947-3): DC-20B
max. voltage between the fuses: 1000V
visible information required: Do not switch under load.

cond. short-circuit current with fuses (AC): 50 kA / 690 V

approved with fuse links of operation class: gG

power dissipation of the article:

The power dissipation at a typical load of 80 % results to 17,3 W.

(The power dissipation at full load would be 27,0 W.)

Supplementary data IEC

The following values have been verified with tests under certain conditions. Please ask Wöhner for this conditions before designing your panel.

max. permitted voltage (IEC) DC: 1000 V

A fuse-combination unit acc. to IEC 60947-3 can only be operated at a higher voltage than its rated voltage, if it is used as a fuse-disconnector without breaking capacity, up to its max. rated insulation voltage and labelled as such.

Degree of protection IP30 at front, degree of protection near terminal depends on installation

Mechanical data

W x H x D: 50 x 455 x 136

weight: 146,0 kg/100

for busbars: 12, 15, 20, 25, 30 x 5, 10 and section busbars

Type of fastening:

patented click mechanism, connection 70mm², screw M8, 12 - 14Nm torque,
connection

clamp 1.5-70mm², 3Nm torque, wedge clamp terminal 16-70mm², 3Nm torque

Terminal points

screw M8 :

Md 12 - 14 Nm

Accessories



03727000

clamp connector
1.5 - 70 mm²
size 00



30894000

M8 screw connector
with spring washer
size 00



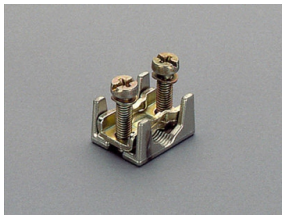
33113000

lateral cover support
for front covers
size 00 - 3



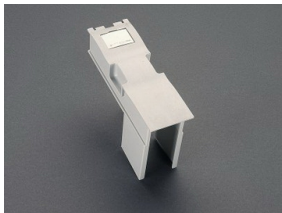
33156000

pilot switch
changeover 250 V AC / 5 A, 30 V DC / 4 A



33224000

prism terminal, single, for Cu cables
16 - 70 mm²
NH 00



33280000

connection cover
size 00
for: 33234, 33235