

busbar 30 x 10 (01625)



The picture may show a similar product.

Description

Part No.: **01625000**
busbar 30 x 10
length 2.40 m, tinned

System

60Classic, 185Power, centre feed unit, 100Energy

Advantages of the product

Tin-plated Cu busbars considerably reduce the effort of preparing the contact points.
The Cu busbars are effectively protected against aggressive media.

Product group 06

Subgroup 83

pack size 1

EAN 4021267016258

catalog page 2020 : 3.3, 4.1

ECLASS 6.1 27370303
ECLASS 7.1 27370303
ETIM 4.0 EC001522
ETIM 5.0 EC001522

Approvals

Standards

IEC 61439-1:2011
UL 508

Approvals

CSA, UL, DNV GL



for UL feeder circuits >250V

type number: 30x10-L

UL file: E123577, UL category (for USA): NMTR <https://www.ul.com>

UL file: E123577, UL category (for Canada): NMTR7 <https://www.ul.com>

CSA file: 110285, CSA class: 3211-37 <https://directories.csa-international.org>

CCC approval: no certification required

Technical data

Details IEC

Standards

IEC 61439-1:2011

Electrical data

Please respect the insulation characteristics of the busbar support for your application.

short-circuit withstandability: see product description of the used busbar support

power dissipation of the article:

The power dissipation at a typical load of 80 % results to 40.3 W.

(The power dissipation at full load would be 63.0 W.)

Supplementary data IEC

The following values have been verified with tests under certain conditions. Please ask Wöhner for this conditions before designing your panel.

current at 30 K 630 A

:

Details UL

Standards

UL 508

for UL feeder circuits >250V

considering the permitted temperature rise at the concrete installation conditions the following capacity could be accepted by UL (file E197039

max. load acc. to UL 508: 630 A

for applications in the system 60Classic up to 756 A

Notice the rated voltage of the used busbar support in the application.

Mechanical data

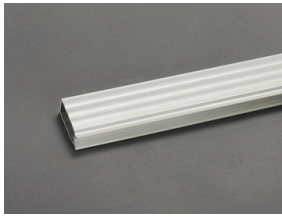
W x H x D: 2400 x 30 x 10

weight: 643.2 kg/100

cross-section: 300 mm²

Edge radius 0.5

Accessories



01245000

busbar cover
for 12 - 30 x 10 busbar, 1 m long
touch protection cover



37212000A

current transformer 200 A / 5 A
2.5 VA / class 1
when used on busbars or in 630 A adapters, article 37900 is additionally required



37213000A

current transformer 250 A / 5 A
2.5 VA / class 1
when used on busbars or in 630 A adapters, article 37900 is additionally required



37214000A

current transformer 400 A / 5 A
2.5 VA / class 1
when used on busbars or in 630 A adapters, article 37900 is additionally required



37215000A

current transformer 500 A / 5 A
2.5 VA / class 1
when used on busbars or in 630 A adapters, article 37900 is additionally required



37216000A

current transformer 600 A / 5 A
2.5 VA / class 1
when used on busbars or in 630 A adapters, article 37900 is additionally required



37219000A

current transformer 200 A / 5 A

1.5 VA / class 0.5

when used on busbars or in 630 A adapters, article 37900 is additionally required



37220000A

current transformer 250 A / 5 A

2.5 VA / class 0.5

when used on busbars or in 630 A adapters, article 37900 is additionally required



37221000A

current transformer 400 A / 5 A

2.5 VA / class 0.5

when used on busbars or in 630 A adapters, article 37900 is additionally required



37222000A

current transformer 500 A / 5 A

2.5 VA / class 0.5

when used on busbars or in 630 A adapters, article 37900 is additionally required



37223000A

current transformer 600 A / 5 A

2.5 VA / class 0.5

when used on busbars or in 630 A adapters, article 37900 is additionally required



37224000A

current transformer 800 A / 5 A

2.5 VA / class 0.5

when used on busbars or in 630 A adapters, article 37900 is additionally required



37217000A

current transformer 800 A / 5 A

2.5 VA / class 1

when used on busbars or in 630 A adapters, article 37900 is additionally required



37232000A

current transformer 200 A / 5 A, with decl. of conformity

1.5 VA / class 0.5

when used on busbars or in 630 A adapters, article 37900 is additionally required



37233000A

current transformer 250 A / 5 A, with decl. of conformity

2.5 VA / class 0.5

when used on busbars or in 630 A adapters, article 37900 is additionally required



37234000A

current transformer 400 A / 5 A, with decl. of conformity

2.5 VA / class 0.5

when used on busbars or in 630 A adapters, article 37900 is additionally required



37235000A

current transformer 500 A / 5 A, with decl. of conformity

2.5 VA / class 0.5

when used on busbars or in 630 A adapters, article 37900 is additionally required



37236000A

current transformer 250 A / 5 A, with decl. of conformity

1.5 VA / class 0.5s

when used on busbars or in 630 A adapters, article 37900 is additionally required



37237000A

current transformer 400 A / 5 A, with decl. of conformity

2.5 VA / class 0.5s

when used on busbars or in 630 A adapters, article 37900 is additionally required



37238000A

current transformer 500 A / 5 A, with decl. of conformity

2.5 VA / class 0.5s

when used on busbars or in 630 A adapters, article 37900 is additionally required



37309000A

measuring transformer 910 A / 333 mV

class 0.5s

when used on busbars or in 630 A adapters, article 37900 is additionally required

NEW



37218000A

current transformer 910 A / 5 A

2.5 VA / class 1

when used on busbars or in 630 A adapters, article 37900 is additionally required



37304000A

measuring transformer 400 A / 333 mV

class 0.5s

when used on busbars or in 630 A adapters, article 37900 is additionally required

NEW



37302000A

measuring transformer 910 A / 333 mV

class 0.5

when used on busbars or in 630 A adapters, 37900 is additionally required

NEW



37307000A

measuring transformer 600 A / 333 mV

class 0.5s

when used on busbars or in 630 A adapters, article 37900 is additionally required

NEW



37303000A

measuring transformer 250 A / 333 mV

class 0.5s

when used on busbars or in 630 A adapters, article 37900 is additionally required

NEW



37306000A

measuring transformer 500 A / 333 mV

class 0.5s

when used on busbars or in 630 A adapters, article 37900 is additionally required

NEW



37308000A

measuring transformer 800 A / 333 mV

class 0.5s

when used on busbars or in 630 A adapters, article 37900 is additionally required

NEW



37301000A

measuring transformer 800 A / 333 mV

class 0.5

when used on busbars or in 630 A adapters, article 37900 is additionally required

NEW



37300000A

measuring transformer 600 A / 333 mV

class 0.5

when used on busbars or in 630 A adapters, article 37900 is additionally required

NEW



37299000A

measuring transformer 500 A / 333 mV

class 0.5

when used on busbars or in 630 A adapters, article 37900 is additionally required

NEW



37305000A

measuring transformer 400 A / 333 mV

class 0.5s

when used on busbars or in 630 A adapters, article 37900 is additionally required

NEW



37298000A

measuring transformer 400 A / 333 mV

class 0.5

when used on busbars or in 630 A adapters, article 37900 is additionally required

NEW



37297000A

measuring transformer 250 A / 333 mV

class 0.5

when used on busbars or in 630 A adapters, article 37900 is additionally required

NEW



37296000A

measuring transformer 200 A / 333 mV

class 0.5

when used on busbars or in 630 A adapters, article 37900 is additionally required

NEW



37295000A

measuring transformer 910 A / 333 mV

class 1

when used on busbars or in 630 A adapters, article 37900 is additionally required

NEW



37294000A

measuring transformer 800 A / 333 mV

class 1

when used on busbars or in 630 A adapters, article 37900 is additionally required

NEW



37293000A

measuring transformer 600 A / 333 mV

class 1

when used on busbars or in 630 A adapters, article 37900 is additionally required

NEW



37292000A

measuring transformer 500 A / 333 mV

class 1

when used on busbars or in 630 A adapters, article 37900 is additionally required

NEW



37291000A

measuring transformer 400 A / 333 mV

class 1

when used on busbars or in 630 A adapters, article 37900 is additionally required

NEW



37290000A

measuring transformer 250 A / 333 mV

class 1

when used on busbars or in 630 A adapters, article 37900 is additionally required

NEW



37289000A

measuring transformer 200 A / 333 mV

class 1

when used on busbars or in 630 A adapters, article 37900 is additionally required

NEW