

# PTRV 4 /WH - Marshalling panel



3270115

<https://www.phoenixcontact.com/za/products/3270115>

Please be informed that the data shown in this PDF document is generated from our online catalog. Please find the complete data in the user documentation. Our general terms of use for downloads are valid.



Marshalling panel, nom. voltage: 250 V, nominal current: 10 A, connection method: Push-in connection, 1st, 2nd, 3rd and 4th level, Rated cross section: 1.5 mm<sup>2</sup>, cross section: 0.14 mm<sup>2</sup> - 2.5 mm<sup>2</sup>, mounting: NS 35/7,5, NS 35/15, color: gray, color of connection elements: white

## Your advantages

- High contact quality thanks to push-in technology as a replacement for Wire-Wrap®, TERMI-POINT®, etc.
- Individual color assignment of cable and terminal point to ensure error-free, safe operation
- Tool-free wiring in a confined space thanks to compact size
- The 2.3 mm test pick-off enables testing between the conductors with commercially available test probes

## Commercial data

Item number	3270115
Packing unit	10 pc
Minimum order quantity	1 pc
Sales key	BE6
Product key	BE6211
Catalog page	Page 46 (C-1-2019)
GTIN	4046356796101
Weight per piece (including packing)	17,773 g
Weight per piece (excluding packing)	15,795 g
Customs tariff number	85369010
Country of origin	PL

# PTRV 4 /WH - Marshalling panel



3270115

<https://www.phoenixcontact.com/za/products/3270115>

## Technical data

### Product properties

Product type	Marshalling terminal
Number of positions	2
Number of connections	16
Number of rows	4
Potentials	4

### Insulation characteristics

Overvoltage category	III
----------------------	-----

### Electrical properties

Rated surge voltage	6 kV
Maximum power dissipation for nominal condition	0.56 W

### Connection data

Number of connections per level	4
Nominal cross section	1.5 mm <sup>2</sup>

#### 1st, 2nd, 3rd and 4th level

Stripping length	8 mm ... 10 mm
Connection in acc. with standard	IEC 60947-7-1
Conductor cross section rigid	0.14 mm <sup>2</sup> ... 2.5 mm <sup>2</sup>
Cross section AWG	26 ... 14 (converted acc. to IEC)
Conductor cross section flexible	0.14 mm <sup>2</sup> ... 1.5 mm <sup>2</sup>
Conductor cross section, flexible [AWG]	26 ... 16 (converted acc. to IEC)
Conductor cross-section flexible (ferrule without plastic sleeve)	0.14 mm <sup>2</sup> ... 1.5 mm <sup>2</sup>
Flexible conductor cross section (ferrule with plastic sleeve)	0.14 mm <sup>2</sup> ... 1.5 mm <sup>2</sup>
Nominal current	10 A
Maximum load current	10 A (with 1.5 mm <sup>2</sup> conductor cross section)
Nominal voltage	250 V
Nominal cross section	1.5 mm <sup>2</sup>

#### 1st, 2nd, 3rd and 4th level Connection cross sections directly pluggable

Conductor cross section rigid	0.34 mm <sup>2</sup> ... 2.5 mm <sup>2</sup>
Conductor cross section, rigid [AWG]	20 ... 14 (converted acc. to IEC)
Conductor cross-section flexible (ferrule without plastic sleeve)	0.34 mm <sup>2</sup> ... 1.5 mm <sup>2</sup>
Flexible conductor cross section (ferrule with plastic sleeve)	0.34 mm <sup>2</sup> ... 1.5 mm <sup>2</sup>

### Dimensions

Width	8.3 mm
Height	64 mm
Depth on NS 35/7,5	55.5 mm
Depth on NS 35/15	63 mm

# PTRV 4 /WH - Marshalling panel



3270115

<https://www.phoenixcontact.com/za/products/3270115>

## Material specifications

Color	gray
Color of connection elements	white
Flammability rating according to UL 94	V0
Insulating material group	I
Insulating material	PA
Static insulating material application in cold	-60 °C
Relative insulation material temperature index (Elec., UL 746 B)	130 °C
Fire protection for rail vehicles (DIN EN 45545-2) R22	HL 1 - HL 3
Fire protection for rail vehicles (DIN EN 45545-2) R23	HL 1 - HL 3
Fire protection for rail vehicles (DIN EN 45545-2) R24	HL 1 - HL 3
Fire protection for rail vehicles (DIN EN 45545-2) R26	HL 1 - HL 3
Surface flammability NFPA 130 (ASTM E 162)	passed
Specific optical density of smoke NFPA 130 (ASTM E 662)	passed
Smoke gas toxicity NFPA 130 (SMP 800C)	passed

## Electrical tests

### Surge voltage test

Test voltage setpoint	4.8 kV
Result	Test passed

### Temperature-rise test

Requirement temperature-rise test	Increase in temperature $\leq 45$ K
Result	Test passed
Short-time withstand current 1.5 mm <sup>2</sup>	0.18 kA
Result	Test passed

### Power-frequency withstand voltage

Test voltage setpoint	1.5 kV
Result	Test passed

## Mechanical properties

### Mechanical data

Open side panel	Yes
-----------------	-----

## Mechanical tests

### Mechanical strength

Result	Test passed
--------	-------------

### Attachment on the carrier

DIN rail/fixing support	NS 35
Test force setpoint	1 N
Result	Test passed

# PTRV 4 /WH - Marshalling panel



3270115

<https://www.phoenixcontact.com/za/products/3270115>

## Test for conductor damage and slackening

Rotation speed	10 rpm
Revolutions	135
Conductor cross section/weight	0.14 mm <sup>2</sup> / 0.2 kg
	1.5 mm <sup>2</sup> / 0.4 kg
	2.5 mm <sup>2</sup> / 0.7 kg
Result	Test passed

## Environmental and real-life conditions

### Aging

Temperature cycles	192
Result	Test passed

### Needle-flame test

Time of exposure	30 s
Result	Test passed

### Oscillation/broadband noise

Specification	DIN EN 50155 (VDE 0115-200):2008-03
Spectrum	Service life test category 2, bogie-mounted
Frequency	$f_1 = 5 \text{ Hz}$ to $f_2 = 250 \text{ Hz}$
ASD level	6.12 (m/s <sup>2</sup> ) <sup>2</sup> /Hz
Acceleration	3.12g
Test duration per axis	5 h
Test directions	X-, Y- and Z-axis
Result	Test passed

### Shocks

Specification	DIN EN 50155 (VDE 0115-200):2008-03
Pulse shape	Half-sine
Acceleration	30g
Shock duration	18 ms
Number of shocks per direction	3
Test directions	X-, Y- and Z-axis (pos. and neg.)
Result	Test passed

### Ambient conditions

Ambient temperature (operation)	-60 °C ... 105 °C (max. short-term operating temperature RTI Elec.)
Ambient temperature (storage/transport)	-25 °C ... 60 °C (for a short time, not exceeding 24 h, -60 °C to +70 °C)
Ambient temperature (assembly)	-5 °C ... 70 °C
Ambient temperature (actuation)	-5 °C ... 70 °C
Permissible humidity (storage/transport)	30 % ... 70 %

## Standards and regulations

# PTRV 4 /WH - Marshalling panel



3270115

<https://www.phoenixcontact.com/za/products/3270115>

Connection in acc. with standard	IEC 60947-7-1
----------------------------------	---------------

## Mounting

Mounting type	NS 35/7,5
	NS 35/15

# PTRV 4 /WH - Marshalling panel

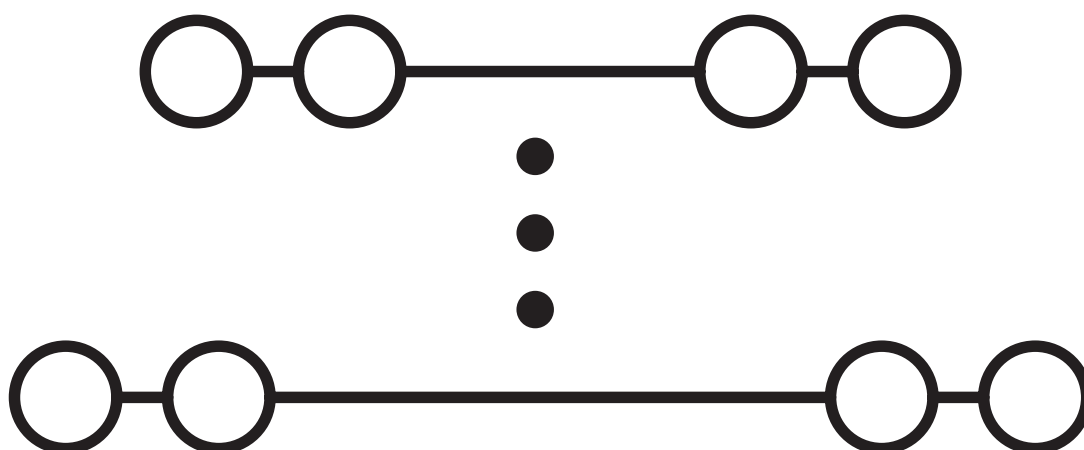


3270115

<https://www.phoenixcontact.com/za/products/3270115>

## Drawings

Circuit diagram



# PTRV 4 /WH - Marshalling panel



3270115

<https://www.phoenixcontact.com/za/products/3270115>

## Approvals

To download certificates, visit the product detail page: <https://www.phoenixcontact.com/za/products/3270115>

### DNV

Approval ID: TAE000016Y



### CSA

Approval ID: 2030668

	Nominal voltage $U_N$	Nominal current $I_N$	Cross section AWG	Cross section $\text{mm}^2$
Use group B				
	300 V	10 A	26 - 14	-
Use group D				
	300 V	10 A	26 - 14	-



### IECEE CB Scheme

Approval ID: NL-58817

	Nominal voltage $U_N$	Nominal current $I_N$	Cross section AWG	Cross section $\text{mm}^2$
	250 V	10 A	-	-



### EAC

Approval ID: RU C-DE.BL08.B.00682



### cULus Recognized

Approval ID: E60425



### KEMA-KEUR

Approval ID: 71-102890

	Nominal voltage $U_N$	Nominal current $I_N$	Cross section AWG	Cross section $\text{mm}^2$
Only flexible conductors	250 V	10 A	-	0.14 - 1.5
Only rigid conductors	250 V	10 A	-	0.14 - 2.5



### cULus Recognized

Approval ID: E60425



### cULus Recognized

Approval ID: E60425

# PTRV 4 /WH - Marshalling panel



3270115

<https://www.phoenixcontact.com/za/products/3270115>

## Classifications

### ECLASS

ECLASS-11.0	27141120
ECLASS-13.0	27250105

### ETIM

ETIM 9.0	EC000897
----------	----------

### UNSPSC

UNSPSC 21.0	39121400
-------------	----------



# PTRV 4 /WH - Marshalling panel



3270115

<https://www.phoenixcontact.com/za/products/3270115>

## Environmental product compliance

China RoHS	Environmentally friendly use period: unlimited = EFUP-e
	No hazardous substances above threshold values

# PTRV 4 /WH - Marshalling panel



3270115

<https://www.phoenixcontact.com/za/products/3270115>

## Accessories

### DP-PTRV 4 - Spacer plate

3270163

<https://www.phoenixcontact.com/za/products/3270163>



Spacer plate, depth: 54 mm, width: 8.3 mm, height: 63.6 mm, color: gray

---

### CDC-PTRV - Retaining bracket

3270167

<https://www.phoenixcontact.com/za/products/3270167>



Retaining bracket, via four PTRV single modules, pitch: 8.3 mm, depth: 71.5 mm, width: 35.6 mm, height: 71.5 mm, color: gray

# PTRV 4 /WH - Marshalling panel

3270115

<https://www.phoenixcontact.com/za/products/3270115>



## RPS - Reducing plug

0201647

<https://www.phoenixcontact.com/za/products/0201647>



Reducing plug, number of positions: 1, color: gray

---

## D-PTRV 4 WH 1-8 - End cover

1117529

<https://www.phoenixcontact.com/za/products/1117529>



End cover, depth: 48.9 mm, width: 2.2 mm, height: 63.6 mm, color: white

# PTRV 4 /WH - Marshalling panel

3270115

<https://www.phoenixcontact.com/za/products/3270115>

## ZB 8,3:UNBEDRUCKT - Zack marker strip

0803444

<https://www.phoenixcontact.com/za/products/0803444>



Zack marker strip, Strip, white, unlabeled, can be labeled with: PLOTMARK, CMS-P1-PLOTTER, mounting type: snapped, for terminal block width: 8.3 mm, lettering field size: 10.5 x 8.3 mm

---

## ZB 8,3,LGS:FORTL.ZAHLEN - Zack marker strip

0803480

<https://www.phoenixcontact.com/za/products/0803480>



Zack marker strip, Strip, white, labeled, can be labeled with: CMS-P1-PLOTTER, mounting type: snapped, for terminal block width: 8.3 mm, lettering field size: 10.5 x 8.3 mm

# PTRV 4 /WH - Marshalling panel

3270115

<https://www.phoenixcontact.com/za/products/3270115>



## ZB 8,3,QR:FORTL.ZAHLEN - Zack marker strip

0803479

<https://www.phoenixcontact.com/za/products/0803479>



Zack marker strip, Strip, white, labeled, can be labeled with: CMS-P1-PLOTTER, mounting type: snapped, for terminal block width: 8.3 mm, lettering field size: 10.5 x 8.3 mm

---

## ZB 8,3 CUS - Zack marker strip

8191573

<https://www.phoenixcontact.com/za/products/8191573>



Zack marker strip, Strip, white, labeled according to customer specifications, mounting type: snap into tall marker groove, for terminal block width: 8.3 mm, lettering field size: 10.5 x 8.3 mm

# PTRV 4 /WH - Marshalling panel



3270115

<https://www.phoenixcontact.com/za/products/3270115>

## TM-PTRV 4,QR:1-4 - Marker for terminal blocks

0803464

<https://www.phoenixcontact.com/za/products/0803464>



Marker for terminal blocks, white, labeled, mounting type: snapped, for terminal block width: 4 mm, lettering field size: 2.4 x 9.2 mm

---

## TM-PTRV 4,QR:4-1 - Marker for terminal blocks

0803465

<https://www.phoenixcontact.com/za/products/0803465>



Marker for terminal blocks, white, labeled, mounting type: snapped, for terminal block width: 4 mm, lettering field size: 2.4 x 9.2 mm

# PTRV 4 /WH - Marshalling panel

3270115

<https://www.phoenixcontact.com/za/products/3270115>

## TM-PTRV 4,QR:A-D - Marker for terminal blocks

0803466

<https://www.phoenixcontact.com/za/products/0803466>



Marker for terminal blocks, white, labeled, mounting type: snapped, for terminal block width: 4 mm, lettering field size: 2.4 x 9.2 mm

---

## TM-PTRV 4,QR:D-A - Marker for terminal blocks

0803467

<https://www.phoenixcontact.com/za/products/0803467>



Marker for terminal blocks, white, labeled, mounting type: snapped, for terminal block width: 4 mm, lettering field size: 2.4 x 9.2 mm

# PTRV 4 /WH - Marshalling panel

3270115

<https://www.phoenixcontact.com/za/products/3270115>

## D-PTRV 4 WH - End cover

3270151

<https://www.phoenixcontact.com/za/products/3270151>



End cover, depth: 48.9 mm, width: 3.8 mm, height: 63.6 mm, color: white

---

## D-PTRV 4 WH 1-4 - End cover

3270152

<https://www.phoenixcontact.com/za/products/3270152>



End cover, depth: 48.9 mm, width: 2.2 mm, height: 63.6 mm, color: white



# PTRV 4 /WH - Marshalling panel



3270115

<https://www.phoenixcontact.com/za/products/3270115>

## D-PTRV 4 WH 1-4 LGS - End cover

3270234

<https://www.phoenixcontact.com/za/products/3270234>



End cover, depth: 48.9 mm, width: 2.2 mm, height: 63.6 mm, color: white

---

## D-PTRV 4 WH 4-1 - End cover

3270236

<https://www.phoenixcontact.com/za/products/3270236>



End cover, depth: 48.9 mm, width: 2.2 mm, height: 63.6 mm, color: white

# PTRV 4 /WH - Marshalling panel



3270115

<https://www.phoenixcontact.com/za/products/3270115>

## D-PTRV 4 WH 4-1 LGS - End cover

3270238

<https://www.phoenixcontact.com/za/products/3270238>



End cover, depth: 48.9 mm, width: 2.2 mm, height: 63.6 mm, color: white

---

## D-PTRV 4 WH A-D - End cover

3270153

<https://www.phoenixcontact.com/za/products/3270153>



End cover, depth: 48.9 mm, width: 2.2 mm, height: 63.6 mm, color: white

# PTRV 4 /WH - Marshalling panel



3270115

<https://www.phoenixcontact.com/za/products/3270115>

## D-PTRV 4 WH A-D LGS - End cover

3270235

<https://www.phoenixcontact.com/za/products/3270235>



End cover, depth: 48.9 mm, width: 2.2 mm, height: 63.6 mm, color: white

---

## D-PTRV 4 WH D-A - End cover

3270237

<https://www.phoenixcontact.com/za/products/3270237>



End cover, depth: 48.9 mm, width: 2.2 mm, height: 63.6 mm, color: white

# PTRV 4 /WH - Marshalling panel

3270115

<https://www.phoenixcontact.com/za/products/3270115>



## D-PTRV 4 WH D-A LGS - End cover

3270239

<https://www.phoenixcontact.com/za/products/3270239>



End cover, depth: 48.9 mm, width: 2.2 mm, height: 63.6 mm, color: white

---

## NS 35/ 7,5 PERF 2000MM - DIN rail perforated

0801733

<https://www.phoenixcontact.com/za/products/0801733>



DIN rail perforated, Pack of 25 (50 m), acc. to EN 60715, material: Steel, galvanized, passivated with a thick layer, Standard profile, color: silver

# PTRV 4 /WH - Marshalling panel

3270115

<https://www.phoenixcontact.com/za/products/3270115>



## NS 35/ 7,5 UNPERF 2000MM - DIN rail, unperforated

0801681

<https://www.phoenixcontact.com/za/products/0801681>



DIN rail, unperforated, Pack of 25 (50 m), acc. to EN 60715, material: Steel, galvanized, passivated with a thick layer, Standard profile, color: silver

---

## NS 35/ 7,5 WH PERF 2000MM - DIN rail perforated

1204119

<https://www.phoenixcontact.com/za/products/1204119>



DIN rail perforated, Pack of 25 (50 m), acc. to EN 60715, material: Steel, Galvanized, white passivated, Standard profile, color: silver

# PTRV 4 /WH - Marshalling panel

3270115

<https://www.phoenixcontact.com/za/products/3270115>



## NS 35/ 7,5 WH UNPERF 2000MM-VPE 10 - DIN rail, unperforated

1204122

<https://www.phoenixcontact.com/za/products/1204122>



DIN rail, unperforated, Pack of 10 (20 m), acc. to EN 60715, material: Steel, Galvanized, white passivated, Standard profile, color: silver

---

## NS 35/ 7,5 AL UNPERF 2000MM - DIN rail, unperforated

0801704

<https://www.phoenixcontact.com/za/products/0801704>



DIN rail, unperforated, Pack of 25 (50 m), acc. to EN 60715, material: Aluminum, uncoated, Standard profile, color: silver

# PTRV 4 /WH - Marshalling panel

3270115

<https://www.phoenixcontact.com/za/products/3270115>



## NS 35/ 7,5 ZN PERF 2000MM - DIN rail perforated

1206421

<https://www.phoenixcontact.com/za/products/1206421>



DIN rail perforated, Pack of 25 (50 m), acc. to EN 60715, material: Steel, galvanized, Standard profile, color: silver

---

## NS 35/ 7,5 ZN UNPERF 2000MM - DIN rail, unperforated

1206434

<https://www.phoenixcontact.com/za/products/1206434>



DIN rail, unperforated, Pack of 25 (50 m), acc. to EN 60715, material: Steel, galvanized, Standard profile, color: silver

# PTRV 4 /WH - Marshalling panel

3270115

<https://www.phoenixcontact.com/za/products/3270115>



## NS 35/ 7,5 CU UNPERF 2000MM-VPE 10 - DIN rail, unperforated

0801762

<https://www.phoenixcontact.com/za/products/0801762>



DIN rail, unperforated, Pack of 10 (20 m), acc. to EN 60715, material: Copper, uncoated, Standard profile, color: copper-colored

---

## NS 35/ 7,5 CAP - End cap

1206560

<https://www.phoenixcontact.com/za/products/1206560>

DIN rail end piece, for DIN rail NS 35/7.5





# PTRV 4 /WH - Marshalling panel

3270115

<https://www.phoenixcontact.com/za/products/3270115>



## CLIPFIX 35 - End bracket

3022218

<https://www.phoenixcontact.com/za/products/3022218>



Quick mounting end clamp for NS 35/7,5 DIN rail or NS 35/15 DIN rail, with marking option, width: 9.5 mm, color: gray

---

## CLIPFIX 35-5 - End bracket

3022276

<https://www.phoenixcontact.com/za/products/3022276>



Quick mounting end clamp for NS 35/7,5 DIN rail or NS 35/15 DIN rail, with marking option, with parking option for FBS...5, FBS...6, KSS 5, KSS 6, width: 5.15 mm, color: gray

# PTRV 4 /WH - Marshalling panel

3270115

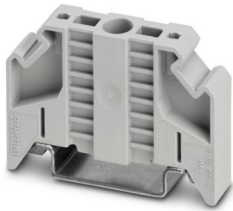
<https://www.phoenixcontact.com/za/products/3270115>

## E/NS 35 N - End bracket

0800886

<https://www.phoenixcontact.com/za/products/0800886>

End clamp, width: 9.5 mm, color: gray



---

## E/UK - End bracket

1201442

<https://www.phoenixcontact.com/za/products/1201442>

End bracket, Mounting on a DIN rail NS 32 or NS 35, material: PA, color: gray



# PTRV 4 /WH - Marshalling panel

3270115

<https://www.phoenixcontact.com/za/products/3270115>



## E/UK 1 - End bracket

1201413

<https://www.phoenixcontact.com/za/products/1201413>



End clamps, for supporting the ends of double-level and three-level terminal blocks, width: 10 mm, color: gray

---

## MPS-MT - Test plug

0201744

<https://www.phoenixcontact.com/za/products/0201744>



Test plug, with solder connection up to 1 mm<sup>2</sup> conductor cross section, number of positions: 1, color: gray

# PTRV 4 /WH - Marshalling panel

3270115

<https://www.phoenixcontact.com/za/products/3270115>



## MPS-IH WH - Insulating sleeve

0201663

<https://www.phoenixcontact.com/za/products/0201663>

Insulating sleeve, color: white



---

## MPS-IH RD - Insulating sleeve

0201676

<https://www.phoenixcontact.com/za/products/0201676>

Insulating sleeve, color: red



# PTRV 4 /WH - Marshalling panel

3270115

<https://www.phoenixcontact.com/za/products/3270115>

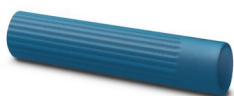


## MPS-IH BU - Insulating sleeve

0201689

<https://www.phoenixcontact.com/za/products/0201689>

Insulating sleeve, color: blue



---

## MPS-IH YE - Insulating sleeve

0201692

<https://www.phoenixcontact.com/za/products/0201692>

Insulating sleeve, color: yellow



# PTRV 4 /WH - Marshalling panel

3270115

<https://www.phoenixcontact.com/za/products/3270115>



## MPS-IH GN - Insulating sleeve

0201702

<https://www.phoenixcontact.com/za/products/0201702>

Insulating sleeve, color: green



---

## MPS-IH GY - Insulating sleeve

0201728

<https://www.phoenixcontact.com/za/products/0201728>

Insulating sleeve, color: gray



# PTRV 4 /WH - Marshalling panel

3270115

<https://www.phoenixcontact.com/za/products/3270115>



## MPS-IH BK - Insulating sleeve

0201731

<https://www.phoenixcontact.com/za/products/0201731>

Insulating sleeve, color: black



---

## SZF 0-0,4X2,5 - Screwdriver

1204504

<https://www.phoenixcontact.com/za/products/1204504>

Actuation tool, for ST terminal blocks, also suitable for use as a bladed screwdriver, size: 0.4 x 2.5 x 75 mm, 2-component grip, with non-slip grip



# PTRV 4 /WH - Marshalling panel

3270115

<https://www.phoenixcontact.com/za/products/3270115>



## ST-BW 0 - Actuation tool

1200135

<https://www.phoenixcontact.com/za/products/1200135>

Actuation tool, for all 1.5 mm<sup>2</sup> spring cages from PT 1,5/S and FT 1,5/S



---

Phoenix Contact 2024 © - all rights reserved

<https://www.phoenixcontact.com>

PHOENIX CONTACT (Pty) Ltd.

36 Lyn Road P.O. Box 916 ZA-Ferndale 2160

+27/11/801-8200

[info@phoenixcontact.co.za](mailto:info@phoenixcontact.co.za)