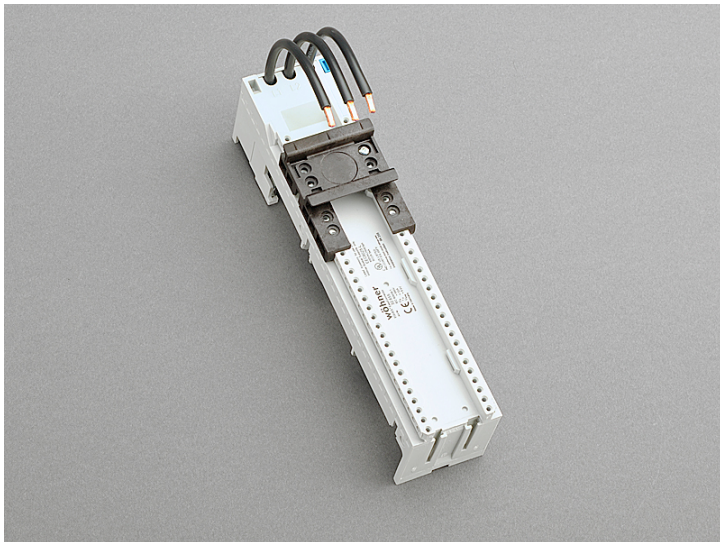


busbar adapter 32 A (32655)



The picture may show a similar product.

Description

Part No.: **32655000**

EQUES[®] 60Classic

busbar adapter 32 A

1 adjustable mounting rail

45 x 200, with leads AWG 10 (6 mm²)

for busbars 12, 15, 20, 25, 30 x 5, 10 and section busbars

System

60Classic

Advantages of the product

Conductor ends ultrasonically sealed.

Click mechanism when pushing onto the busbar.

Product group 05

Subgroup 21

pack size 4
EAN 4021267326555

catalog page 2020 : 3.11

ECLASS 6.1 27370304
ECLASS 7.1 27370304
ETIM 4.0 EC001531
ETIM 5.0 EC001531

Approvals

Standards

IEC 61439-1:2011
UL 508

Approvals

CSA , UL , DNV GL , EAC



for UL feeder circuits >250V

type number: EEC6025-L
EAC Type: EQ

UL file: E123577, UL category (for USA): NMTR <http://www.ul.com>
UL file: E123577, UL category (for Canada): NMTR7 <http://www.ul.com>
CSA file: 110285, CSA class: 3211-37 <http://directories.csa-international.org>
CCC approval: no certification required

Technical data

Details IEC

Standards

IEC 61439-1:2011

Electrical data IEC

Rated current (IEC): 32 A
rated voltage (IEC) AC: 690 V

rated isolation voltage U_i AC: 800 V

rated surge voltage U_{imp} : 6 kV

short-circuit withstandability: the short-circuit capacity of the combination of adapter and motor starter depends on the motor starter

Motorschutzschalter bis 25 A:

50 kA @ 600 V / Durchlassstrom 7 kA

Motorschutzschalter bis 32 A:

25 kA @ 480 V / Durchlassstrom 9 kA

power dissipation of the article:

The power dissipation at a typical load of 80 % results to 1.6 W.

(The power dissipation at full load would be 2.5 W.)

Details UL

Standards

UL 508

for UL feeder circuits >250V

Electrical data UL

rated current (UL): 25 A
rated voltage (UL) AC: 600 V
rated frequency (UL): 50 / 60 Hz

SCCR unprotected max.: 5 kA
3 cycles (without OPD) @ 600 V AC

SCCR protected max.: 65 kA

SCCR: 30 kA with any NKJH Comb. Motor Controller 12,5 A / 600 V AC
65 kA with any NKJH Comb. Motor Controller 25 A / 480 V AC
65 kA with any NKJH Comb. Motor Controller 16 A / 480 V AC
50 kA with any NKJH Comb. Motor Controller 32 A / 480 V AC

Mechanical data

W x H x D: 45 x 200 x 63

weight: 33.3 kg/100

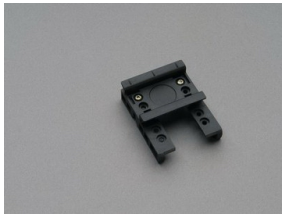
poles: 3-pole

for busbars: 12, 15, 20, 25, 30 x 5, 10 and section busbars

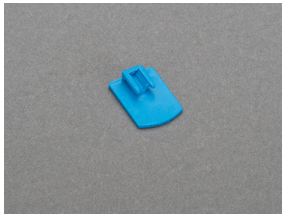
Reference

For compact mounting of complete motor circuits with commercially available switchgear and safe mechanical and electrical connection to the busbar system.

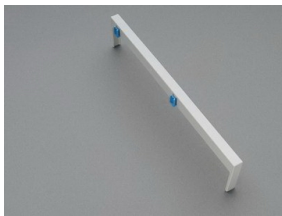
Accessories



32947000
mounting rail 45 mm
for busbar adapters



32969000
mounting rail end stop



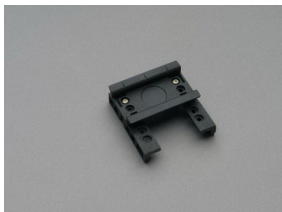
32963000
side-mounted module for busbar adapters
attachable to both sides
9 x 200
for: EEC60..



32979000A
positioning piece for Eaton PKZ



32952000A
positioning piece for Siemens S00 and S0



32940000A
mounting rail 54 mm
for busbar adapters
NEW