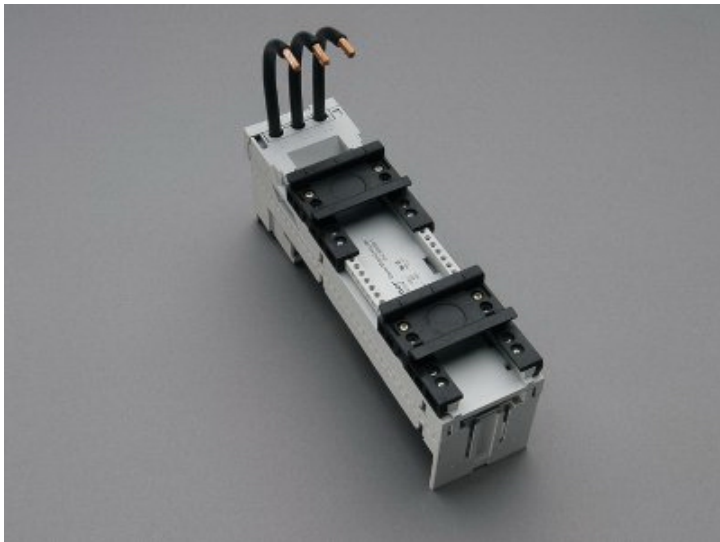


## busbar adapter 45 A (32412)



The picture may show a similar product.

### Description

Part No.: **32412000**

EQUES<sup>®</sup> 60Classic

busbar adapter 45 A

2 adjustable mounting rails

54 x 200, with removable upper section and leads AWG 8 (10 mm<sup>2</sup>)

for busbars 12, 15, 20, 25, 30 x 5, 10 and section busbars

with CrossLink<sup>®</sup>Technology

### System

60Classic

### Advantages of the product

Conductor ends ultrasonically sealed.

Click mechanism when pushing onto the busbar.

**Product group** 05

**Subgroup** 22

pack size 4  
EAN 4021267324124

Katalogseite US US 2020 : 3.9

ECLASS 6.1 27370304  
ECLASS 7.1 27370304  
ETIM 4.0 EC001531  
ETIM 5.0 EC001531

## Approvals

### Standards

IEC 61439-1:2011  
UL 508

### Approvals

CSA, UL, DNV GL, EAC



for UL feeder circuits >250V

type number: EMC6045-L  
EAC Type: EQ

UL file: E123577, UL category (for USA): NMTR <http://www.ul.com>  
UL file: E123577, UL category (for Canada): NMTR7 <http://www.ul.com>  
CSA file: 110285, CSA class: 3211-37 <http://directories.csa-international.org>  
CCC approval: no certification required

## Technical data

### Details IEC

#### Standards

IEC 61439-1:2011

## Electrical data IEC

Rated current (IEC): 45 A  
rated voltage (IEC) AC: 690 V

rated isolation voltage  $U_i$  AC: 800 V

rated surge voltage  $U_{imp}$ : 6 kV

short-circuit withstandability: the short-circuit capacity of the combination of adapter and motor starter depends on the motor starter

power dissipation of the article:

The power dissipation at a typical load of 80 % results to 3.5 W.  
(The power dissipation at full load would be 5.5 W.)

## Details UL

### Standards

UL 508

for UL feeder circuits >250V

## Electrical data UL

rated current (UL): 45 A  
rated voltage (UL) AC: 600 V  
rated frequency (UL): 50 / 60 Hz

SCCR protected max.: 65 kA

SCCR: 65kA with any DIVQ/7 circuit breaker 40A / 480V AC

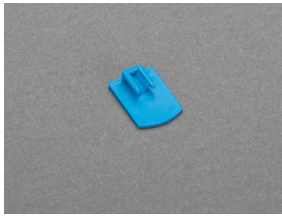
## Mechanical data

W x H x D: 54 x 200 x 75  
weight: 52.9 kg/100  
poles: 3-pole  
for busbars: 12, 15, 20, 25, 30 x 5, 10 and section busbars

## Reference

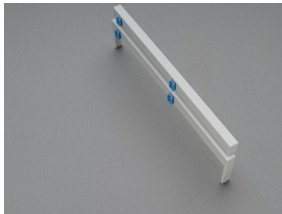
For compact mounting of complete motor circuits with commercially available switchgear and safe mechanical and electrical connection to the busbar system. In the test position, the structure locks and disconnects safely from the primary energy supply.

## Accessories



### **32969000**

mounting rail end stop

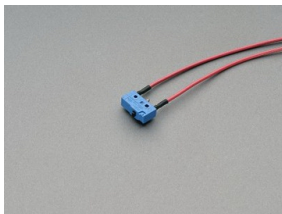


### **32964000**

side-mounted module for busbar adapters  
attachable to both sides

9 x 200

for: EMC60..



### **32956000**

pilot switch for adapters with removable upper section  
1 N/C



### **32953000A**

positioning piece for Siemens S2  
NEW