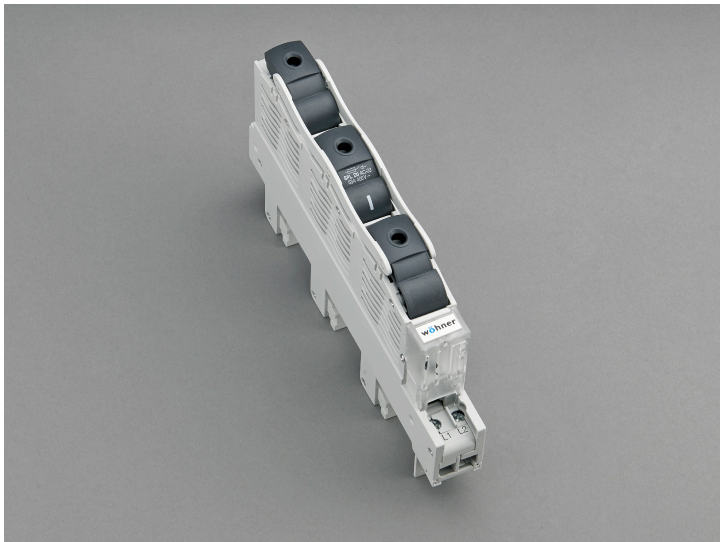


## D0 busbar mounted switch-disconnector-fuse (31158)



The picture may show a similar product.

### Description

Part No.: **31158**000

SECUR<sup>®</sup> 60Classic PowerLiner

D0 busbar mounted switch-disconnector-fuse

for fuse links D01 and D02

E18 / 63 A / 3P

connection bottom

for busbars 12, 15, 20, 25, 30 x 5, 10 and section busbars

3-pole / 1-pole switching

### System

60Classic

Product group 01

Subgroup 42

pack size 1

EAN 4021267311582

ECLASS 6.1 27142110

ECLASS 7.1 27142110

ETIM 4.0 EC000277

ETIM 5.0 EC000277

## Approvals

### Standards

IEC 60947-1:2020

IEC 60947-3:2020 AC ratings only

### Approvals

VDE , CCC , EAC



type number: SPL-D0

EAC Type: D0

CCC certificate: 2018010302128773

## Technical data

for fuse links size:

D0

fuse links acc. to standard:

IEC / HD 60269-3

permitted power dissipation of the fuse-link:

5.5 W

requirements for contact parts:

Fuse links with silver-plated contact pieces recommended.

For fuse links with nickel-plated contact pieces, a reduction factor of 0.8 is to be observed.

### Details IEC

#### Standards

IEC 60947-1:2020

IEC 60947-3:2020 AC ratings only

## Electrical data IEC

Rated current (IEC): 63 A  
rated voltage (IEC) AC: 400 V

rated voltage (IEC) DC: 110 V

rated isolation voltage  $U_i$  AC: 500 V  
rated isolation voltage  $U_i$  DC: 250 V  
rated surge voltage  $U_{imp}$ : 6 kV

Utilisation category AC (IEC 60947-3): AC-23A (400 V)  
Utilisation category DC (IEC 60947-3): DC-21B (48V) 1 pole  
DC-21B (110V) 2 poles

cond. short-circuit current with fuses (AC): 50 kA / 400 V  
approved with fuse links of operation class: gG

power dissipation of the article:  
The power dissipation at a typical load of 80 % results to 6.7 W.  
(The power dissipation at full load would be 10.5 W.)

## Supplementary data IEC

The following values have been verified with tests under certain conditions. Please ask Wöhner for this conditions before designing your panel.

A fuse-combination unit acc. to IEC 60947-3 can only be operated at a higher voltage than its rated voltage, if it is used as a fuse-disconnector without breaking capacity, up to its max. rated insulation voltage and labelled as such.

for fuse links and gauge rings as per DIN VDE 0636-3 IEC / HD 60269-3  
utilisation category as per VDE 0638: AC22

The function of isolation between incoming and outgoing contacts is provided by the opening of the switching mechanism as required in the standard.

## Mechanical data

W x H x D: 27 x 220 x 100  
weight: 75.9 kg/100  
poles: 3-pole  
for busbars: 12, 15, 20, 25, 30 x 5, 10 and section busbars

front degree of protection: IP20

Type of fastening: patented click mechanism

### **Terminal points**

cage clamp connection

screw drive: PZ2

wire stripping: 12 mm

min. cross-section: 1.5 mm<sup>2</sup>

max. cross-section: 16 mm<sup>2</sup>

Md min.: 2.5 Nm

Md max.: 3.0 Nm

Not suitable for aluminium cables !

frame terminal:

Cu 1,5 - 6 mm<sup>2</sup> round solid

Cu 1,5 - 16 mm<sup>2</sup> flexible with or without ferrule

### **Reference**

SECUR®PowerLiner can be fitted with D0 adapter sleeves. With reducer insert (Part no. 31902) and adapter sleeves, also suitable for D01 fuse links. The use of the side module part no. 31901 is recommended for continuous loads of 35 A or greater.

use D0 fuse links with silver plated caps

## Accessories



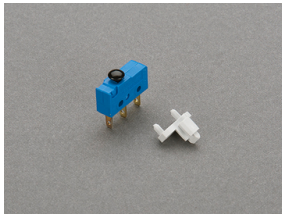
### **31901000**

side-mounted module



### **31902000**

reducer D02 for D01 fuses 2 - 16 A



### **31903000**

pilot switch

changeover 250 V AC / 5 A, 30 V DC / 4 A