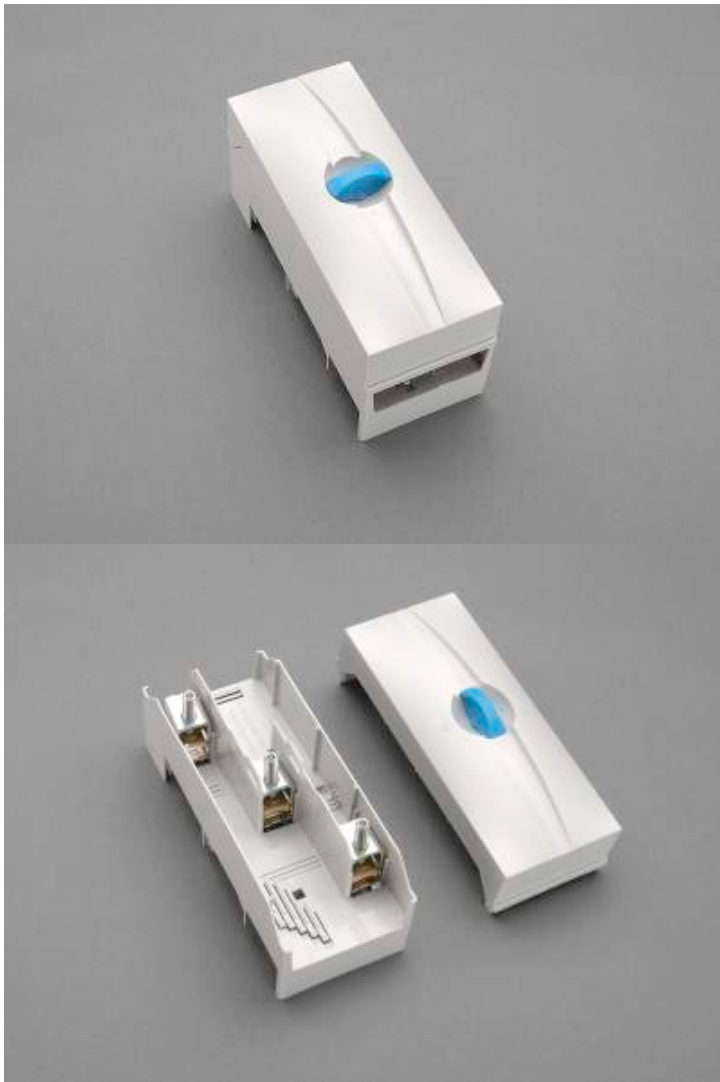
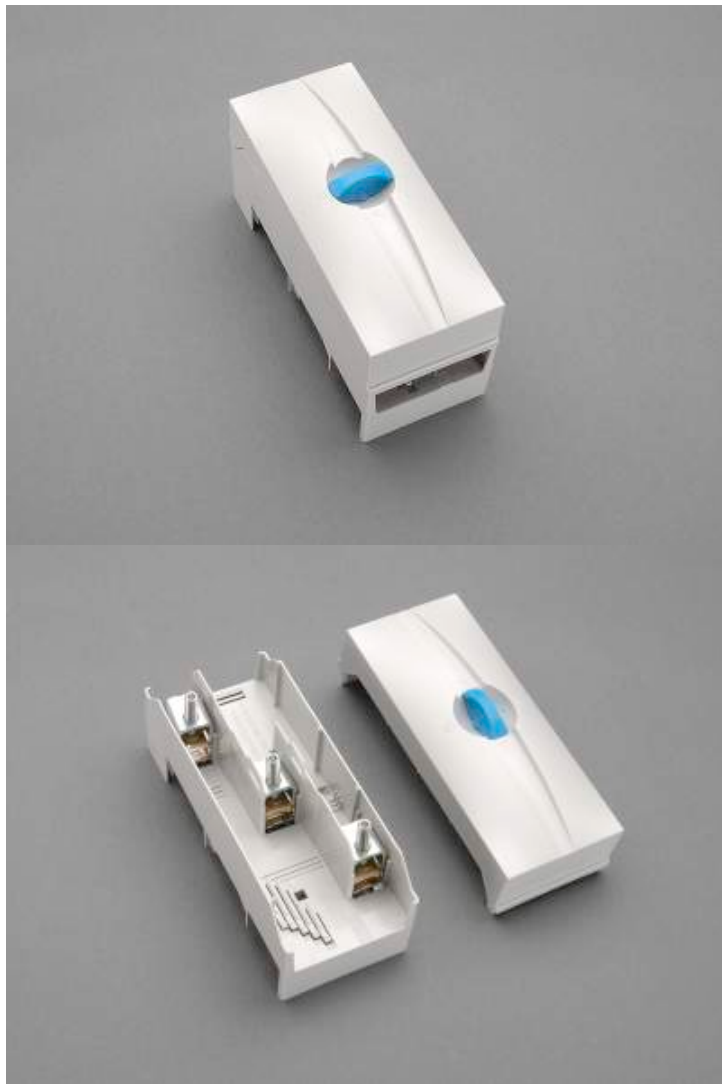


connection terminal plate, 3-pole (01243)



The picture may show a similar product.



Description

Part No.: **01243**000

CRITO[®] 60Classic

connection terminal plate, 3-pole

10 - 120 mm², AWG 6 - 250 MCM, lam. Cu. 9 - 15.5 x 2,4 - 10

for busbars 12, 15, 20, 25, 30 x 5, 10 and section busbars

System

60Classic

Advantages of the product

Terminals can be removed for connection of uncut conductors

Product group 07

Subgroup 45

pack size 1
EAN 4021267012434

catalog page 2020 : 3.5

ECLASS 6.1 27141146
ECLASS 7.1 27141146
ETIM 4.0 EC000001
ETIM 5.0 EC000001

Approvals

Standards

IEC 61439-1:2011
IEC 60999-1:1999
IEC 60999-2:2003
UL 508

Approvals

CSA , UL , DNV GL , EAC



for UL feeder circuits >250V

type number: 243-L

EAC Type: TE-3P

UL file: E123577, UL category (for USA): NMTR <http://www.ul.com>
UL file: E123577, UL category (for Canada): NMTR7 <http://www.ul.com>
CSA file: 110285, CSA class: 3211-37 <http://directories.csa-international.org>
CCC approval: no certification required

Technical data

Details IEC

Standards

IEC 61439-1:2011
IEC 60999-1:1999
IEC 60999-2:2003

Electrical data IEC

Rated current (IEC): 250 A
rated voltage (IEC) AC: 690 V

rated surge voltage U_{imp} : 6 kV

The insulation performance of the article depends on the installation conditions.

rated peak withstand current I_{pk} max.: 56.3 kA

rated short-time withstand current I_{CW} (0.1 s) max.: 22 kA

power dissipation of the article:

The power dissipation at a typical load of 80 % results to 3.8 W.

(The power dissipation at full load would be 6.0 W.)

Supplementary data IEC

The following values have been verified with tests under certain conditions. Please ask Wöhner for this conditions before designing your panel.

max. permitted voltage (IEC) AC: 1000 V

max. permitted voltage (IEC) DC: 1500 V

current capacity (IEC) max.: 440 A

Details UL

Standards

UL 508

for UL feeder circuits >250V

suitable for field-installed conductors

Electrical data UL

rated current (UL): 250 A

rated voltage (UL) AC: 600 V

rated frequency (UL): 50 / 60 Hz

for wires UL: Cu 75°C

SCCR unprotected max.: 10 kA

3 cycles (without OPD) @ 600 V AC

SCCR protected max.: 100 kA

SCCR: 35 kA with any DIVQ/7 circuit breaker 600 A / 600 V AC
50 kA with any DIVQ/7 circuit breaker 600 A / 480 V AC
100 kA with JDDZ fuse Class J 600 A / 480 V AC
100 kA with JDDZ fuse Class J 500 A / 600 V AC
65 kA with any DIVQ/7 circuit breaker 400 A / 480 V AC

considering the permitted temperature rise at the concrete installation conditions a capacity of 400 A is accepted by UL

Mechanical data

W x H x D: 81 x 200 x 84
weight: 53.5 kg/100
poles: 3-pole
for busbars: 12, 15, 20, 25, 30 x 5, 10 and section busbars

Terminal points

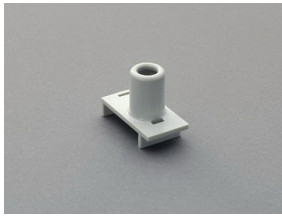
cage clamp connection
wire stripping: 25 mm
min. cross-section: 16 mm²
max. cross-section: 120 mm²
Terminal space: 15 x 15
Md min.: 12.0 Nm
Md max.: 12.5 Nm
Not suitable for aluminium cables !

min. cross-section UL: AWG 6
max. cross-section UL: MCM 250
torque (UL): 106 lb-in
for wires UL: Cu 75°C

16 - 120 mm² / AWG 6 - 250 MCM flexible cables, directly
10 - 120 mm² / AWG 7 - 250 MCM flexible cables with wire-end ferrule
16 - 150 mm² / AWG 6 - 300 MCM stranded round cables
10 mm² rigid cables
lam. Cu 12x4 - 15,5x10
Md 12 - 12,5 Nm / 106 lb-in

(flexible cables of maximum cross-section may not fit when using wire-end ferrule)

Accessories



01301000

single cover for terminals
for terminal plate 01243