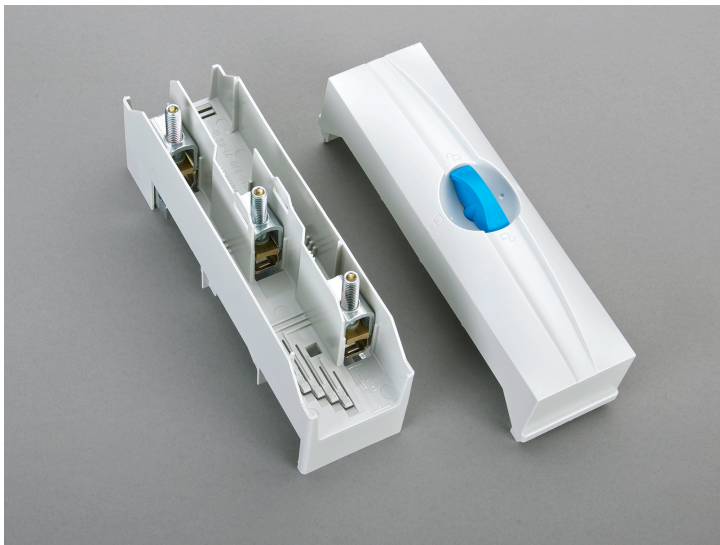
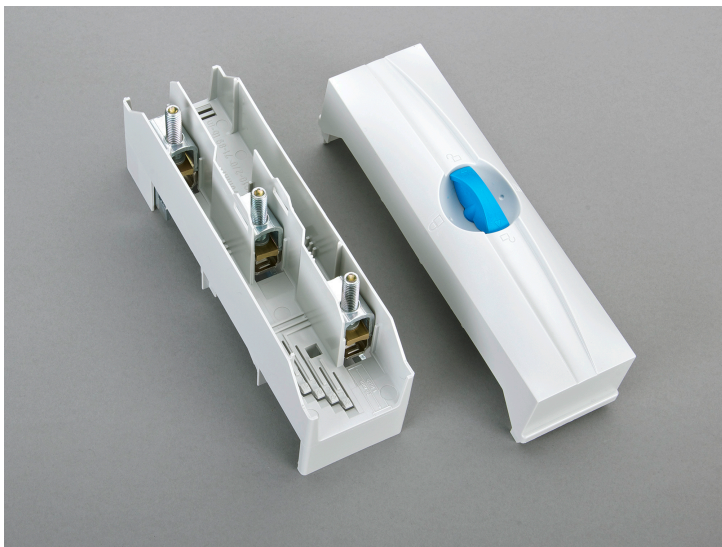


## Connection terminal plate, 3 pole (01240)



The picture may show a similar product.



## Description

Part No.: **01240**000

CRITO<sup>®</sup> 60Classic

Connection terminal plate, 3 pole

6 - 50 mm<sup>2</sup>, AWG 10 - 2/0, lam. Cu. 7 - 9 x 4 - 10

for busbars 12, 15, 20, 25, 30 x 5, 10 and section busbars

## System

60Classic

## Advantages of the product

Terminals can be removed for connection of uncut conductors

**Product group** 07

**Subgroup** 42

pack size 1  
EAN 4021267012403

catalog page 2020 : 3.5

ECLASS 6.1 27141146  
ECLASS 7.1 27141146  
ETIM 4.0 EC000001  
ETIM 5.0 EC000001

## Approvals

### Standards

IEC 61439-1:2011  
IEC 60999-1:1999  
IEC 60999-2:2003  
UL 508

### Approvals

CSA , UL , DNV GL , EAC



for UL feeder circuits >250V

type number: 240-L  
EAC Type: TE-3P

UL file: E123577, UL category (for USA): NMTR <http://www.ul.com>  
UL file: E123577, UL category (for Canada): NMTR7 <http://www.ul.com>  
CSA file: 110285, CSA class: 3211-37 <http://directories.csa-international.org>  
CCC approval: no certification required

## Technical data

### Details IEC

#### Standards

IEC 61439-1:2011  
IEC 60999-1:1999  
IEC 60999-2:2003

### Electrical data IEC

Rated current (IEC): 175 A  
rated voltage (IEC) AC: 690 V

rated surge voltage  $U_{imp}$ : 6 kV

The insulation performance of the article depends on the installation conditions.

rated peak withstand current  $I_{pk}$  max.: 40.5 kA

power dissipation of the article:

The power dissipation at a typical load of 80 % results to 1.9 W.  
(The power dissipation at full load would be 3.0 W.)

### Supplementary data IEC

The following values have been verified with tests under certain conditions. Please ask Wöhner for this conditions before designing your panel.

max. permitted voltage (IEC) AC: 1000 V  
max. permitted voltage (IEC) DC: 1500 V  
current capacity (IEC) max.: 300 A

### Details UL

#### Standards

UL 508

for UL feeder circuits >250V  
suitable for field-installed conductors

### Electrical data UL

rated current (UL): 175 A  
rated voltage (UL) AC: 600 V  
rated frequency (UL): 50 / 60 Hz

SCCR unprotected max.: 10 kA  
3 cycles (without OPD) @ 600 V AC  
SCCR protected max.: 100 kA

SCCR: 65 kA with any DIVQ/7 circuit breaker 200 A / 480 V AC  
100 kA with JDDZ fuse Class J, CF or T 150 A / 600 V AC

### Mechanical data

W x H x D: 54 x 200 x 84  
weight: 45.1 kg/100  
poles: 3-pole  
for busbars: 12, 15, 20, 25, 30 x 5, 10 and section busbars

### Terminal points

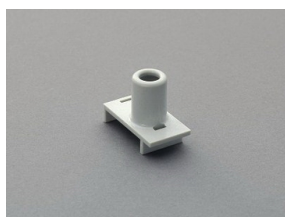
cage clamp connection  
wire stripping: 25 mm  
min. cross-section: 6 mm<sup>2</sup>  
max. cross-section: 50 mm<sup>2</sup>  
Md min.: 8.0 Nm  
Md max.: 10.0 Nm  
Not suitable for aluminium cables !

min. cross-section UL: AWG 10  
max. cross-section UL: AWG 2/0  
torque (UL): 71 lb-in

6 - 50 (70) mm<sup>2</sup> / AWG 10 - AWG 2/0  
flexible cables, directly or with wire-end ferrule,  
stranded round cables  
lam. Cu 7x4 - 9x6  
Md 8-10 Nm / 71 lb-in

(flexible cables of maximum cross-section may not fit when using wire-end ferrule)

## Accessories



**01300000**

single cover for terminals  
for terminal plate 01240