

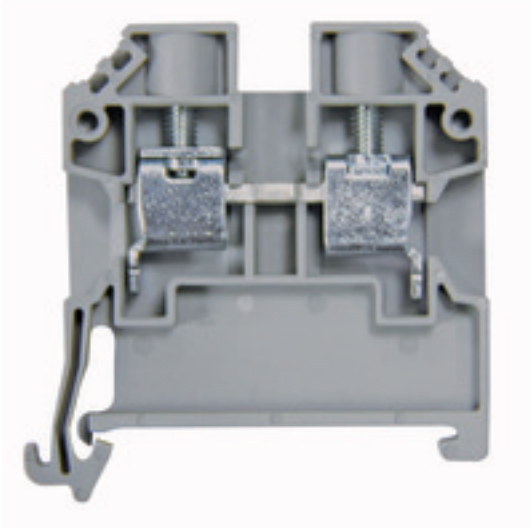
SAKDU 6**Weidmüller Interface GmbH & Co. KG**

Klingenbergstraße 26

D-32758 Detmold

Germany

www.weidmueller.com



To feed through power, signal, and data is the classical requirement in electrical engineering and panel building. The insulating material, the connection system and the design of the terminal blocks are the differentiating features. A feed-through terminal block is suitable for joining and/or connecting one or more conductors. They could have one or more connection levels that are on the same potential or insulated against one another.

General ordering data

Version	Feed-through terminal, Screw connection, 6 mm ² , 800 V, 41 A, grey
Order No.	1124220000
Type	SAKDU 6
GTIN (EAN)	4032248985838
Qty.	100 pc(s).
Delivery status	This article will no longer be available in the future.
Local product	Only available in certain countries

Creation date September 22, 2023 4:07:42 AM CEST

Catalogue status 15.09.2023 / We reserve the right to make technical changes.

SAKDU 6

Weidmüller Interface GmbH & Co. KG

Klingenbergstraße 26

D-32758 Detmold

Germany

www.weidmueller.com

Technical data

General ordering data

Local product	Only available in certain countries
---------------	-------------------------------------

Dimensions and weights

Depth	46.35 mm	Depth (inches)	1.825 inch
Depth including DIN rail	47 mm	Height	45 mm
Height (inches)	1.772 inch	Width	7.9 mm
Width (inches)	0.311 inch	Net weight	12.3 g

Temperatures

Storage temperature	-25 °C...55 °C	Continuous operating temp., min.	-50 °C
Continuous operating temp., max.	120 °C		

Material data

Material	PA 66/6	Colour	grey
UL 94 flammability rating	V-0		

System specifications

End cover plate required	Yes	Number of levels	1
Number of clamping points per level	2	Number of potentials per tier	1
Levels cross-connected internally	No	PE connection	No
Rail	TS 35		

Additional technical data

Type of mounting	Snap-on
------------------	---------

Conductors for clamping (rated connection)

Clamping range, max.	6 mm ²	Clamping range, min.	0.5 mm ²
Clamping screw	M 3.5	Connection cross-section, stranded, max.	6 mm ²
Connection cross-section, stranded, min.	0.5 mm ²	Connection direction	on side
Gauge to IEC 60947-1	A5	Number of connections	2
Stripping length	12 mm	Tightening torque, max.	1.2 Nm
Tightening torque, min.	0.8 Nm	Type of connection	Screw connection
Wire connection cross section AWG, max.	AWG 8	Wire connection cross section AWG, min.	AWG 22
Wire connection cross section, finely stranded, max.	6 mm ²	Wire connection cross section, finely stranded, min.	0.5 mm ²
Wire connection cross-section, finely stranded with wire-end ferrules DIN 46228/1, max.	6 mm ²	Wire connection cross-section, finely stranded with wire-end ferrules DIN 46228/1, min.	0.5 mm ²
Wire connection cross-section, finely stranded with wire-end ferrules DIN 46228/4, max.	6 mm ²	Wire connection cross-section, finely stranded with wire-end ferrules DIN 46228/4, min.	0.5 mm ²
Wire connection cross-section, solid core, max.	6 mm ²	Wire connection cross-section, solid core, min.	0.5 mm ²

SAKDU 6

Weidmüller Interface GmbH & Co. KG

Klingenbergstraße 26

D-32758 Detmold

Germany

www.weidmueller.com

Technical data

General

Rail	TS 35	Wire connection cross section AWG, max.	AWG 8
Wire connection cross section AWG, min.	AWG 22		

Rating data

Rated cross-section	6 mm ²	Rated voltage	800 V
Rated DC voltage	800 V	Rated current	41 A
Current at maximum wires	41 A	Volume resistance according to IEC 60947-7-x	0.78 mΩ
Rated impulse withstand voltage	8 kV	Power loss in accordance with IEC 60947-7-x	1.31 W
Pollution severity	3	Surge voltage category	III

UL rating data

Certificate No. (UR)	E60693	Conductor size Factory wiring max. (UR)	8 AWG
Conductor size Factory wiring min. (UR)	22 AWG	Conductor size Field wiring max. (UR)	8 AWG
Conductor size Field wiring min. (UR)	22 AWG	Current size B (UR)	40 A
Current size C (UR)	40 A	Voltage size B (UR)	600 V
Voltage size C (UR)	600 V		

Classifications

ETIM 6.0	EC000897	ETIM 7.0	EC000897
ETIM 8.0	EC000897	ETIM 9.0	EC000897
ECLASS 9.0	27-14-11-20	ECLASS 9.1	27-14-11-20
ECLASS 10.0	27-14-11-20	ECLASS 11.0	27-14-11-20
ECLASS 12.0	27-14-11-20	ECLASS 13.0	27250101

Approvals

Approvals



ROHS	Conform
UL File Number Search	UL Website
Certificate No. (UR)	E60693

Downloads

Approval/Certificate/Document of Conformity	CE Declaration of Conformity UKCA declaration of conformity
Engineering Data	CAD data – STEP
User Documentation	StorageConditionsTerminalBlocks
Catalogues	Catalogues in PDF-format
Brochures	

SAKDU 6

Weidmüller Interface GmbH & Co. KG
 Klingenbergstraße 26
 D-32758 Detmold
 Germany

www.weidmueller.com

Accessories

End plate



Klippon® Connect with clamping yoke Technology

The high reliability and variety of designs of the terminal blocks with clamping yoke connections make planning easier and optimises operational safety. Klippon® Connect provides a proven response to a range of different requirements.

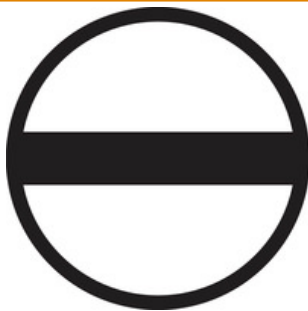
General ordering data

Type SAKAP 6-10 BL
 Order No. [1370230000](#)
 GTIN (EAN) 4050118178623
 Qty. 20 pc(s).

Type SAKAP 6-10
 Order No. [1129470000](#)
 GTIN (EAN) 4032248970636
 Qty. 20 pc(s).

Type SAKTW 35
 Order No. [2696960000](#)
 GTIN (EAN) 4050118861464
 Qty. 20 pc(s).

Slotted screwdriver



Slotted screwdriver with rounded blade SD DIN 5265, ISO 2380/2, output to DIN 5264, ISO 2380/1. ChromTop tip, SoftFinish grip

General ordering data

Type	SDS 0.8X4.0X100	Version	
Order No.	2749360000	Screwdriver, Blade width (B): 4 mm, Blade length: 100 mm, Blade	
GTIN (EAN)	4050118895582	thickness (A): 0.8 mm	
Qty.	1 pc(s).		

SAKDU 6

Weidmüller Interface GmbH & Co. KG
 Klingenbergstraße 26
 D-32758 Detmold
 Germany

www.weidmueller.com

Accessories

SAKQ 6

**Klippon® Connect with clamping yoke Technology**

The high reliability and variety of designs of the terminal blocks with clamping yoke connections make planning easier and optimises operational safety. Klippon® Connect provides a proven response to a range of different requirements.

General ordering data

Type SAKQ 6/3
 Order No. [1129370000](#)
 GTIN (EAN) 4032248996223
 Qty. 50 pc(s).

Type SAKQ 6/4
 Order No. [1129380000](#)
 GTIN (EAN) 4032248996230
 Qty. 50 pc(s).

Type SAKQ 6/2
 Order No. [1129350000](#)
 GTIN (EAN) 4032248996216
 Qty. 50 pc(s).

Type SAKQ 6/10
 Order No. [1129390000](#)
 GTIN (EAN) 4032248996247
 Qty. 20 pc(s).

End bracket**Klippon® Connect with clamping yoke Technology**

The high reliability and variety of designs of the terminal blocks with clamping yoke connections make planning easier and optimises operational safety. Klippon® Connect provides a proven response to a range of different requirements.

General ordering data

Type SAKEW 35
 Order No. [1129450000](#)
 GTIN (EAN) 4032248970612
 Qty. 50 pc(s).

SAKDU 6

Weidmüller Interface GmbH & Co. KG
 Klingenbergstraße 26
 D-32758 Detmold
 Germany

www.weidmueller.com

Accessories

Plus



The Dekafix (DEK) marker is the universal marker for all conductor and plug-in connectors as well as for electronic sub-assemblies. The system is ideal for short number sequences and covers a wide range of ready-printed markers.

Strips for fast installation in only one work step. The printing is easy to read, rich in contrast and available in various widths.

- Large range of ready-to-use markers
- Strips for fast installation
- Terminal markers, suitable for all Weidmüller cable connectors
- Available as blank MultiCard or with standard printing

For custom printing: Please send us a file of our labeling software M-Print PRO or M-Print PRO Online (without installation) for your labeling specifications.

General ordering data

Type	DEK 5/8 PLUS MC NE WS	Version
Order No.	1046350000	Dekafix, Terminal marker, 5 x 8 mm, Pitch in mm (P): 8.00
GTIN (EAN)	4032248782055	Weidmueller, white
Qty.	800 pc(s).	

BLM

General ordering data

Type	BLM 5/8 TB	Version
Order No.	7760380692	BLM, Terminal marker, 5 x 8 mm, Pitch in mm (P): 8.00 Weidmueller,
GTIN (EAN)	6944169819148	white
Qty.	4,800 pc(s).	