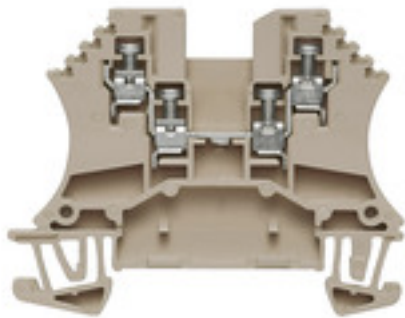


**WDU 1.5/ZZ**

**Weidmüller Interface GmbH & Co. KG**  
 Klingenbergstraße 26  
 D-32758 Detmold  
 Germany

www.weidmueller.com

**Product image**



To feed through power, signal, and data is the classical requirement in electrical engineering and panel building. The insulating material, the connection system and the design of the terminal blocks are the differentiating features. A feed-through terminal block is suitable for joining and/or connecting one or more conductors. They could have one or more connection levels that are on the same potential or insulated against one another.

**General ordering data**

Version	Feed-through terminal, Screw connection, 1.5 mm <sup>2</sup> , 800 V, 17.5 A, dark beige
Order No.	<a href="#">1031400000</a>
Type	WDU 1.5/ZZ
GTIN (EAN)	4008190148546
Qty.	100 Stück

Erstellungs-Datum 10:09:39 CEST Ngày 15 tháng 6 năm 2023

Katalogstand 09.06.2023 / Technische Änderungen vorbehalten

## WDU 1.5/ZZ

**Weidmüller Interface GmbH & Co. KG**

Klingenbergstraße 26

D-32758 Detmold

Germany

www.weidmueller.com

## Technische Daten

### Dimensions and weights

Depth	46,5 mm	Depth (inches)	1,831 inch
Height	60 mm	Height (inches)	2,362 inch
Width	5,1 mm	Width (inches)	0,201 inch
Net weight	8,09 g		

### Temperatures

Storage temperature		Operating temperature range	For operating temperature range see EC Design Test Certificate / IEC Ex-Certificate of Conformity
	-25 °C...55 °C		
Continuous operating temp., min.	-60 °C	Continuous operating temp., max.	130 °C

### Material data

Material	Wemid	Colour	dark beige
UL 94 flammability rating	V-0		

### Rating data IECEx/ATEX

Certificate No. (ATEX)	DEMKO14ATEX1338U	Certificate No. (IECEX)	IECEXULD14.0005U
Max. voltage (ATEX)	550 V	Current (ATEX)	17.5 A
Wire cross section max. (ATEX)	2.5 mm <sup>2</sup>	Max. voltage (IECEX)	550 V
Current (IECEX)	17.5 A	Wire cross section max. (IECEX)	2.5 mm <sup>2</sup>
Operating temperature range	For operating temperature range see EC Design Test Certificate / IEC Ex-Certificate of Conformity	Marking EN 60079-7	
Ex 2014/34/EU label	II 2 G D		Ex eb II C Gb

### System specifications

Version	Screw connection, Twin connection, for plug-in cross-connector, One end without connector	End cover plate required	Yes
Number of potentials	1	Number of levels	1
Number of clamping points per level	4	Number of potentials per tier	1
Levels cross-connected internally	No	PE connection	No
Rail	TS 35	N-function	No
PE function	No	PEN function	No

### 2 clampable conductors (H05V/H07V) with equal cross-section (rated connection)

Cross-section for connected wire, solid, two clampable wires, max.	2,5 mm <sup>2</sup>	Cross-section for connected wire, solid, two clampable wires, min.	0,5 mm <sup>2</sup>
Wire connection cross section, finely stranded with wire-end ferrules DIN 46228/1, 2 clampable wires, max.	0,75 mm <sup>2</sup>	Wire connection cross section, finely stranded with wire-end ferrules DIN 46228/1, 2 clampable wires, min.	0,5 mm <sup>2</sup>
Wire connection cross section, finely stranded, two clampable wires, min.	0,5 mm <sup>2</sup>	Wire cross-section, finely stranded, two clampable wires, max.	1 mm <sup>2</sup>

### Additional technical data

Explosion-tested version	Yes	Number of similar terminals	1
Open sides	right	Type of mounting	Snap-on

Erstellungs-Datum 10:09:39 CEST Ngày 15 tháng 6 năm 2023

Katalogstand 09.06.2023 / Technische Änderungen vorbehalten

## WDU 1.5/ZZ

**Weidmüller Interface GmbH & Co. KG**  
 Klingenbergstraße 26  
 D-32758 Detmold  
 Germany

www.weidmueller.com

## Technische Daten

### CSA rating data

Certificate No. (CSA)	200039-1057876	Current size C (CSA)	10 A
Voltage size C (CSA)	300 V	Wire cross section max. (CSA)	12 AWG
Wire cross section min. (CSA)	26 AWG		

### Conductors for clamping (rated connection)

Blade size	0.6 x 3.5 mm		
Clampable conductor	Connection specification	Screw connection	
		Cross-section for conductor connection	Type solid, H05(07) V-U
			min. 0,5 mm <sup>2</sup>
			max. 2,5 mm <sup>2</sup>
		nominal 1,5 mm <sup>2</sup>	
	wire end ferrule	Stripping length	min. 7 mm
			max. 7 mm
			nominal 7 mm
		Tightening torque	min. 0,4 Nm
		max. 0,6 Nm	
		Recommended wire-end ferrule	
	Connection specification	Screw connection	
		Cross-section for conductor connection	Type stranded, H07V-R
			min. 0,5 mm <sup>2</sup>
			max. 2,5 mm <sup>2</sup>
		nominal 1,5 mm <sup>2</sup>	
	wire end ferrule	Stripping length	min. 7 mm
			max. 7 mm
			nominal 7 mm
		Tightening torque	min. 0,4 Nm
		max. 0,6 Nm	
		Recommended wire-end ferrule	
	Connection specification	Screw connection	
		Cross-section for conductor connection	Type flexible, H05(07) V-K
		min. 0,5 mm <sup>2</sup>	
		max. 1,5 mm <sup>2</sup>	
	nominal 1,5 mm <sup>2</sup>		
wire end ferrule	Stripping length	min. 7 mm	
		max. 7 mm	
		nominal 7 mm	
	Tightening torque	min. 0,4 Nm	
	max. 0,6 Nm		
	Recommended wire-end ferrule		
Clamping range, max.	2,5 mm <sup>2</sup>		
Clamping range, min.	0,13 mm <sup>2</sup>		
Clamping screw	M 2.5		
Connection cross-section, stranded, max.	2,5 mm <sup>2</sup>		
Connection cross-section, stranded, min.	0,5 mm <sup>2</sup>		
Connection direction	on side		
Gauge to IEC 60947-1	A1		
Number of connections	4		
Stripping length	7 mm		
Tightening torque, max.	0,6 Nm		
Tightening torque, min.	0,4 Nm		

Erstellungs-Datum 10:09:39 CEST Ngày 15 tháng 6 năm 2023

## WDU 1.5/ZZ

**Weidmüller Interface GmbH & Co. KG**

Klingenbergstraße 26

D-32758 Detmold

Germany

www.weidmueller.com

## Technische Daten

Torque level with DMS electric screwdriver	1
Type of connection	Screw connection
Wire connection cross section AWG, max.	AWG 14
Wire connection cross section AWG, min.	AWG 26
Wire connection cross section, finely stranded, max.	1,5 mm <sup>2</sup>
Wire connection cross section, finely stranded, min.	0,5 mm <sup>2</sup>
Wire connection cross-section, finely stranded with wire-end ferrules DIN 46228/1, max.	1,5 mm <sup>2</sup>
Wire connection cross-section, finely stranded with wire-end ferrules DIN 46228/1, min.	0,5 mm <sup>2</sup>
Wire connection cross-section, finely stranded with wire-end ferrules DIN 46228/4, max.	1,5 mm <sup>2</sup>
Wire connection cross-section, finely stranded with wire-end ferrules DIN 46228/4, min.	0,5 mm <sup>2</sup>
Wire connection cross-section, solid core, max.	2,5 mm <sup>2</sup>
Wire connection cross-section, solid core, min.	0,5 mm <sup>2</sup>

### General

Rail	TS 35	Standards	IEC 60947-7-1
Wire connection cross section AWG, max.	AWG 14	Wire connection cross section AWG, min.	AWG 26

### Rating data

Rated cross-section	1,5 mm <sup>2</sup>	Rated voltage	800 V
Rated current	17,5 A	Current at maximum wires	23 A
Standards	IEC 60947-7-1	Volume resistance according to IEC 60947-7-x	1,83 mΩ
Rated impulse withstand voltage	8 kV	Power loss in accordance with IEC 60947-7-x	0,56 W
Pollution severity	3		

### UL rating data

Certificate No. (UR)	E60693	Conductor size Factory wiring max. (UR)	12 AWG
Conductor size Factory wiring min. (UR)	26 AWG	Conductor size Field wiring max. (UR)	12 AWG
Conductor size Field wiring min. (UR)	22 AWG	Current size C (UR)	25 A
Voltage size C (UR)	300 V		

### Classifications

ETIM 6.0	EC000897	ETIM 7.0	EC000897
ETIM 8.0	EC000897	ECLASS 9.0	27-14-11-20
ECLASS 9.1	27-14-11-20	ECLASS 10.0	27-14-11-20
ECLASS 11.0	27-14-11-20	ECLASS 12.0	27-14-11-20

Erstellungs-Datum 10:09:39 CEST Ngày 15 tháng 6 năm 2023

Katalogstand 09.06.2023 / Technische Änderungen vorbehalten

## WDU 1.5/ZZ

**Weidmüller Interface GmbH & Co. KG**  
 Klingenbergstraße 26  
 D-32758 Detmold  
 Germany

www.weidmueller.com

## Technische Daten

### Approvals

Approvals



ROHS	Conform
UL File Number Search	UL Website
Certificate No. (UR)	E60693

### Downloads

Approval/Certificate/Document of Conformity	<a href="#">Attestation of Conformity</a> <a href="#">IECEX Certificate</a> <a href="#">EAC certificate</a> <a href="#">MARITREG Certificate</a> <a href="#">EAC EX Certificate</a> <a href="#">CCC Ex Certificate</a> <a href="#">UKCA Ex Certificate</a> <a href="#">CE Declaration of Conformity</a> <a href="#">ATEX Certificate</a> <a href="#">CE Declaration of Conformity all terminals</a> <a href="#">UKCA declaration of conformity</a>
Engineering Data	<a href="#">CAD data – STEP</a>
Engineering Data	<a href="#">WSCAD, Zuken E3.S, EPLAN</a>
User Documentation	<a href="#">StorageConditionsTerminalBlocks</a> <a href="#">NTI WDU-WPE 1.5 ZZ</a>
Catalogues	<a href="#">Catalogues in PDF-format</a>
Brochures	

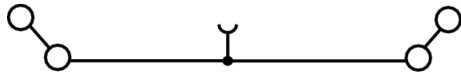
**Datenblatt**

**WDU 1.5/ZZ**

**Weidmüller Interface GmbH & Co. KG**  
Klingenbergstraße 26  
D-32758 Detmold  
Germany

[www.weidmueller.com](http://www.weidmueller.com)

**Zeichnungen**



**WDU 1.5/ZZ**

**Weidmüller Interface GmbH & Co. KG**  
 Klingenbergstraße 26  
 D-32758 Detmold  
 Germany

www.weidmueller.com

**Accessories**

**W-Series**



Test adapters and test plugs are used for the electrical connection between terminal blocks and the test equipment. In this way, an electrical contact can be established in the wired state and measurements can be done easily.

**General ordering data**

Type	WTA 2 WDU2.5-10	Version
Order No.	<a href="#">1632320000</a>	W-Series, Test adapter
GTIN (EAN)	4008190257347	
Qty.	25 Stück	

Type	WTA 2/ZA WDU2.5-10	Version
Order No.	<a href="#">1632330000</a>	W-Series, Test adapter
GTIN (EAN)	4008190257330	
Qty.	25 Stück	

**Testsockets**



Test adapters and test plugs are used for the electrical connection between terminal blocks and the test equipment. In this way, an electrical contact can be established in the wired state and measurements can be done easily.

**General ordering data**

Type	STB 8.5/D4/2.3/M2.5 AKZ	Version
Order No.	<a href="#">0215700000</a>	Accessories, Socket
GTIN (EAN)	4008190184872	
Qty.	50 Stück	

## WDU 1.5/ZZ

**Weidmüller Interface GmbH & Co. KG**  
 Klingenbergstraße 26  
 D-32758 Detmold  
 Germany

www.weidmueller.com

## Accessories

### Blank



WS markers are the perfect match for the W-series connectors. Thanks to their system compatibility, the WS tags can also be used with the I-series and the Z-series. The large marking surfaces do not only permit long character strings but also multi-line text. WS markers are ideal for labels with long, customised character strings. Thanks to the proven MultiCard format, printing with PrintJet CONNECT oder/or Plotter is possible.

- Can be fitted in strips or individually
- Markers in proven MultiCard format

**For custom printing:** Please send us a file of our labeling software M-Print PRO or M-Print PRO Online (without installation) for your labeling specifications.

### General ordering data

Type	WS 12/5 MC NE WS	Version
Order No.	<a href="#">1609860000</a>	WS, Terminal marker, 12 x 5 mm, Pitch in mm (P): 5.00 Weidmueller,
GTIN (EAN)	4008190203481	Allen-Bradley, white
Qty.	720 Stück	

### WQB

### General ordering data

Type	WQB B/2	Version
Order No.	<a href="#">1579010000</a>	W-Series, Cross-connector, For the terminals, Number of poles: 2
GTIN (EAN)	4008190021696	
Qty.	50 Stück	
Type	WQB B/10	Version
Order No.	<a href="#">1579050000</a>	W-Series, Cross-connector, For the terminals, Number of poles: 10
GTIN (EAN)	4008190094508	
Qty.	20 Stück	
Type	WQB B/6	Version
Order No.	<a href="#">1579040000</a>	W-Series, Cross-connector, For the terminals, Number of poles: 6
GTIN (EAN)	4008190081041	
Qty.	20 Stück	
Type	WQB B/4	Version
Order No.	<a href="#">1579030000</a>	W-Series, Cross-connector, For the terminals, Number of poles: 4
GTIN (EAN)	4008190185046	
Qty.	50 Stück	

Erstellungs-Datum 10:09:39 CEST Ngày 15 tháng 6 năm 2023



## WDU 1.5/ZZ

**Weidmüller Interface GmbH & Co. KG**  
 Klingenbergstraße 26  
 D-32758 Detmold  
 Germany

www.weidmueller.com

## Accessories

Type	WQB B/24	Version
Order No.	<a href="#">1579060000</a>	W-Series, Cross-connector, For the terminals, Number of poles: 24
GTIN (EAN)	4008190188597	
Qty.	20 Stück	

Type	WQB B/3	Version
Order No.	<a href="#">1579020000</a>	W-Series, Cross-connector, For the terminals, Number of poles: 3
GTIN (EAN)	4008190062392	
Qty.	50 Stück	

## 2.5 mm<sup>2</sup>



The plug-in cross-connections feature easy handling and quick installation. This saves a great deal of time during installation in comparison with screwed solutions.

### General ordering data

Type	ZQV 2.5N/3 GE	Version
Order No.	<a href="#">1693810000</a>	W-Series, Cross-connector, 24 A
GTIN (EAN)	4008190883645	
Qty.	60 Stück	

Type	ZQV 2.5N/20 GE	Version
Order No.	<a href="#">1909000000</a>	W-Series, Cross-connector, 24 A
GTIN (EAN)	4032248535613	
Qty.	20 Stück	

Type	ZQV 2.5N/2 GE	Version
Order No.	<a href="#">1693800000</a>	W-Series, Cross-connector, 24 A
GTIN (EAN)	4008190883621	
Qty.	60 Stück	

Type	ZQV 2.5N/20 RT	Version
Order No.	<a href="#">1909110000</a>	W-Series, Cross-connector, For the terminals, Number of poles: 20
GTIN (EAN)	4032248535781	
Qty.	20 Stück	

Type	ZQV 2.5N/10 GE	Version
Order No.	<a href="#">1693880000</a>	W-Series, Cross-connector, 24 A
GTIN (EAN)	4008190883720	
Qty.	20 Stück	

Type	ZQV 2.5N/4 GE	Version
Order No.	<a href="#">1693820000</a>	W-Series, Cross-connector, 24 A
GTIN (EAN)	4008190883652	
Qty.	60 Stück	

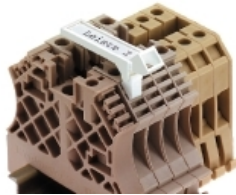
## WDU 1.5/ZZ

**Weidmüller Interface GmbH & Co. KG**  
 Klingenbergstraße 26  
 D-32758 Detmold  
 Germany

www.weidmueller.com

## Accessories

### SchT group marker carrier



The SchT 5 S group tag carriers are clipped directly onto the TS 32 mounting rail (G-rail) or the TS 35 mounting rail (top-hat rail). It is therefore possible to label the terminal strip irrespective of the terminal and the type of terminal. SchT 5 and SchT 5 S are fitted with ESO 5, STR 5 protective strips.

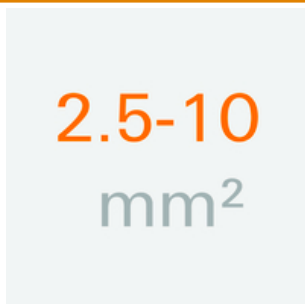
The SchT 7 is a hinged group tag carrier for inlay tags which enables easy access to the clamping screw. The SchT 7 is fitted with ESO 7, STR 7 protective strips or DEK 5.

Inlay tags and protective strips can be found under "Accessories".

#### General ordering data

Type	SCHT 7	Version	
Order No.	<a href="#">0517960000</a>	SCHT, Terminal marker, 39.3 x 8 mm, Pitch in mm (P): 7.00	
GTIN (EAN)	4008190001742	Weidmueller, white	
Qty.	20 Stück		

### 2.5-10 mm<sup>2</sup>



End plates are fitted to the open side of the last modular terminal before the end bracket. The use of an end plate ensures the function of the modular terminal and the specified rated voltage. It guarantees protection against contact with live parts and makes the final terminal finger-proof.

#### General ordering data

Type	WAP 2.5-10	Version	
Order No.	<a href="#">1050000000</a>	W-Series, End plate	
GTIN (EAN)	4008190103149		
Qty.	50 Stück		
Type	WAP 2.5-10 BL	Version	
Order No.	<a href="#">1050080000</a>	W-Series, End plate	
GTIN (EAN)	4008190136611		
Qty.	50 Stück		
Type	WAP 16+35 WTW 2.5-10 BL	Version	
Order No.	<a href="#">1050180000</a>	W-Series, End plate, Partition plate	
GTIN (EAN)	4008190013899		
Qty.	20 Stück		
Type	WAP 16+35 WTW 2.5-10	Version	
Order No.	<a href="#">1050100000</a>	W-Series, End plate, Partition plate	
GTIN (EAN)	4008190079901		
Qty.	20 Stück		

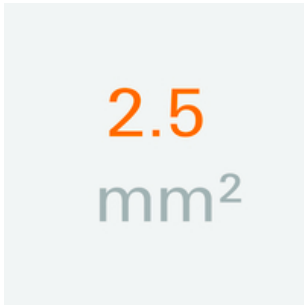
## WDU 1.5/ZZ

**Weidmüller Interface GmbH & Co. KG**  
 Klingenbergstraße 26  
 D-32758 Detmold  
 Germany

www.weidmueller.com

## Accessories

### 2.5 mm<sup>2</sup>



Screwable cross-connections are easy to mount and de mount. Thanks to the big contact surface, even high currents can be transmitted with maximum contact reliability.

### General ordering data

Type	WQV 2.5/4	Version
Order No.	<a href="#">1053860000</a>	W-Series, Cross-connector, For the terminals, Number of poles: 4
GTIN (EAN)	4008190049706	
Qty.	50 Stück	
Type	WQV 2.5/10	Version
Order No.	<a href="#">1054460000</a>	W-Series, Cross-connector, For the terminals, Number of poles: 10
GTIN (EAN)	4008190135089	
Qty.	20 Stück	
Type	WQV 2.5/3	Version
Order No.	<a href="#">1053760000</a>	W-Series, Cross-connector, For the terminals, Number of poles: 3
GTIN (EAN)	4008190058999	
Qty.	50 Stück	
Type	WQV 2.5/2	Version
Order No.	<a href="#">1053660000</a>	W-Series, Cross-connector, For the terminals, Number of poles: 2
GTIN (EAN)	4008190031121	
Qty.	50 Stück	

## WDU 1.5/ZZ

**Weidmüller Interface GmbH & Co. KG**  
 Klingenbergstraße 26  
 D-32758 Detmold  
 Germany

www.weidmueller.com

## Accessories

## Blank



The Dekafix (DEK) marker is the universal marker for all conductor and plug-in connectors as well as for electronic sub-assemblies. The system is ideal for short number sequences and covers a wide range of ready-printed markers.

Strips for fast installation in only one work step. The printing is easy to read, rich in contrast and available in various widths.

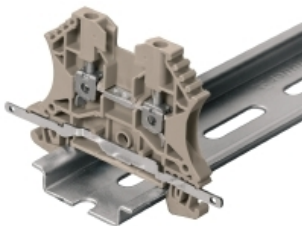
- Large range of ready-to-use markers
- Strips for fast installation
- Terminal markers, suitable for all Weidmüller cable connectors
- Available as blank MultiCard or with standard printing

**For custom printing:** Please send us a file of our labeling software M-Print PRO or M-Print PRO Online (without installation) for your labeling specifications.

## General ordering data

Type	DEK 5/5 MC NE WS	Version
Order No.	<a href="#">1609801044</a>	Dekafix, Terminal marker, 5 x 5 mm, Pitch in mm (P): 5.00
GTIN (EAN)	4008190397111	Weidmueller, white
Qty.	1.000 Stück	

## Shielding connection



With the LS 2.8 WDU2.5-10, many feed-through modular terminal blocks from the W series can be converted very easily. Inserting the LS 2.8 WDU2.5-10 allows the cable shielding braid to be looped through directly at the terminal block by soldering or using a suitable flat cable lug.

## General ordering data

Type	LS 2.8 WDU2.5-10	Version
Order No.	<a href="#">1056400000</a>	W-Series, Shield bus
GTIN (EAN)	4008190036454	
Qty.	100 Stück	

## WDU 1.5/ZZ

**Weidmüller Interface GmbH & Co. KG**  
 Klingenbergstraße 26  
 D-32758 Detmold  
 Germany

www.weidmueller.com

## Accessories

### W-Series



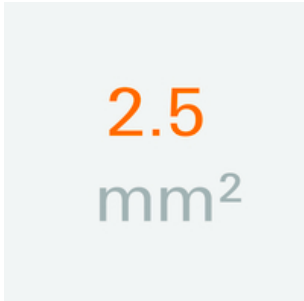
Warning covers with a flash symbol provide more safety for man and machine. They are used where external voltage must be indicated within the application.

#### General ordering data

Type	WAD 4 WS
Order No.	<a href="#">1072100000</a>
GTIN (EAN)	4008190446116
Qty.	50 Stück

Type	WAD 4 GE BED
Order No.	<a href="#">1072000000</a>
GTIN (EAN)	4008190446109
Qty.	50 Stück

### 2.5 mm<sup>2</sup>



The plug-in cross-connections feature easy handling and quick installation. This saves a great deal of time during installation in comparison with screwed solutions.

#### General ordering data

Type	ZQV 2.5N/50
Order No.	<a href="#">1527730000</a>
GTIN (EAN)	4050118411362
Qty.	5 Stück

Type	ZQV 2.5N/6 RD
Order No.	<a href="#">2108720000</a>
GTIN (EAN)	4050118448504
Qty.	20 Stück

Type	ZQV 2.5N/2
Order No.	<a href="#">1527540000</a>
GTIN (EAN)	4050118448467
Qty.	60 Stück

Type	ZQV 2.5N/20 RD
Order No.	<a href="#">2108920000</a>
GTIN (EAN)	4050118485899
Qty.	20 Stück

**WDU 1.5/ZZ**

**Weidmüller Interface GmbH & Co. KG**  
Klingenbergstraße 26  
D-32758 Detmold  
Germany

www.weidmueller.com

**Accessories**

Type	ZQV 2.5N/8
Order No.	<a href="#">1527670000</a>
GTIN (EAN)	4050118448405
Qty.	20 Stück
Type	ZQV 2.5N/6
Order No.	<a href="#">1527630000</a>
GTIN (EAN)	4050118448429
Qty.	20 Stück
Type	ZQV 2.5N/4 RD
Order No.	<a href="#">2108700000</a>
GTIN (EAN)	4050118448528
Qty.	60 Stück
Type	ZQV 2.5N/8 BL
Order No.	<a href="#">1527840000</a>
GTIN (EAN)	4050118448597
Qty.	20 Stück
Type	ZQV 2.5N/5 RD
Order No.	<a href="#">2108710000</a>
GTIN (EAN)	4050118448511
Qty.	20 Stück
Type	ZQV 2.5N/7 RD
Order No.	<a href="#">2108810000</a>
GTIN (EAN)	4050118448498
Qty.	20 Stück
Type	ZQV 2.5N/2 BL
Order No.	<a href="#">1527740000</a>
GTIN (EAN)	4050118448658
Qty.	60 Stück
Type	ZQV 2.5N/9
Order No.	<a href="#">1527680000</a>
GTIN (EAN)	4050118447996
Qty.	20 Stück
Type	ZQV 2.5N/20
Order No.	<a href="#">1527720000</a>
GTIN (EAN)	4050118447972
Qty.	20 Stück
Type	ZQV 2.5N/7
Order No.	<a href="#">1527640000</a>
GTIN (EAN)	4050118448412
Qty.	20 Stück
Type	ZQV 2.5N/50 RD
Order No.	<a href="#">2109000000</a>
GTIN (EAN)	4050118486001
Qty.	5 Stück
Type	ZQV 2.5N/5
Order No.	<a href="#">1527620000</a>
GTIN (EAN)	4050118448436
Qty.	20 Stück
Type	ZQV 2.5N/3 RD
Order No.	<a href="#">2108690000</a>
GTIN (EAN)	4050118448535
Qty.	60 Stück

**WDU 1.5/ZZ****Weidmüller Interface GmbH & Co. KG**  
Klingenbergstraße 26  
D-32758 Detmold  
Germany

www.weidmueller.com

**Accessories**

Type	ZQV 2.5N/3
Order No.	<a href="#">1527570000</a>
GTIN (EAN)	4050118448450
Qty.	60 Stück
Type	ZQV 2.5N/7 BL
Order No.	<a href="#">1527830000</a>
GTIN (EAN)	4050118448603
Qty.	20 Stück
Type	ZQV 2.5N/20 BL
Order No.	<a href="#">1527890000</a>
GTIN (EAN)	4050118448566
Qty.	20 Stück
Type	ZQV 2.5N/10 RD
Order No.	<a href="#">2108910000</a>
GTIN (EAN)	4050118486018
Qty.	20 Stück
Type	ZQV 2.5N/9 RD
Order No.	<a href="#">2108900000</a>
GTIN (EAN)	4050118448474
Qty.	20 Stück
Type	ZQV 2.5N/4 BL
Order No.	<a href="#">1527780000</a>
GTIN (EAN)	4050118448634
Qty.	60 Stück
Type	ZQV 2.5N/6 BL
Order No.	<a href="#">1527820000</a>
GTIN (EAN)	4050118448610
Qty.	20 Stück
Type	ZQV 2.5N/8 RD
Order No.	<a href="#">2108870000</a>
GTIN (EAN)	4050118448481
Qty.	20 Stück
Type	ZQV 2.5N/5 BL
Order No.	<a href="#">1527790000</a>
GTIN (EAN)	4050118448627
Qty.	20 Stück
Type	ZQV 2.5N/9 BL
Order No.	<a href="#">1527870000</a>
GTIN (EAN)	4050118448580
Qty.	20 Stück
Type	ZQV 2.5N/50 BL
Order No.	<a href="#">1527920000</a>
GTIN (EAN)	4050118448559
Qty.	5 Stück
Type	ZQV 2.5N/10
Order No.	<a href="#">1527690000</a>
GTIN (EAN)	4050118447989
Qty.	20 Stück
Type	ZQV 2.5N/4
Order No.	<a href="#">1527590000</a>
GTIN (EAN)	4050118448443
Qty.	60 Stück

## WDU 1.5/ZZ

**Weidmüller Interface GmbH & Co. KG**  
 Klingenbergstraße 26  
 D-32758 Detmold  
 Germany

[www.weidmueller.com](http://www.weidmueller.com)

## Accessories

Type ZQV 2.5N/3 BL  
 Order No. [1527770000](#)  
 GTIN (EAN) 4050118448641  
 Qty. 60 Stück

Type ZQV 2.5N/2 RD  
 Order No. [2108470000](#)  
 GTIN (EAN) 4050118448542  
 Qty. 60 Stück

Type ZQV 2.5N/10 BL  
 Order No. [1527880000](#)  
 GTIN (EAN) 4050118448573  
 Qty. 20 Stück

## Miscellaneous



We offer a broad portfolio of mounting support for easy handling and supplementation of our products. From various tools to insulating sleeves and various screws, our components are matched to each other down to the last detail and thus facilitate assembly in compliance with the respective standards and protective regulations.

## General ordering data

Type	BZT 1 WS 10/5	Version
Order No.	<a href="#">1805490000</a>	Accessories, Marker holder
GTIN (EAN)	4032248270231	
Qty.	100 Stück	

Type	BZT 1 ZA WS 10/5	Version
Order No.	<a href="#">1805520000</a>	Accessories, Marker holder
GTIN (EAN)	4032248270248	
Qty.	100 Stück	



## WDU 1.5/ZZ

**Weidmüller Interface GmbH & Co. KG**  
 Klingenbergstraße 26  
 D-32758 Detmold  
 Germany

www.weidmueller.com

## Accessories

### W-Series



Weidmüller's range of products includes end brackets that guarantee a permanent, reliable mounting on the terminal rail and prevent sliding. Versions with and without screws are available. The end brackets include marking options, also for group markers, and also a test plug holder.

#### General ordering data

Type	WEW 35/2	Version
Order No.	<a href="#">1061200000</a>	W-Series, End bracket
GTIN (EAN)	4008190030230	
Qty.	50 Stück	

### W-Series



A partition plate is used for the optical separation of circuits or used for electrical isolation from neighbouring cross-connectors. In contrast to the end plate, the contour can be larger than the adjacent terminal blocks. However, it should not be smaller, as otherwise the required clearance and creepage distances within the application can no longer be maintained.

#### General ordering data

Type	WTW EN	Version
Order No.	<a href="#">1058800000</a>	W-Series, Partition plate
GTIN (EAN)	4008190140175	
Qty.	20 Stück	

## WDU 1.5/ZZ

**Weidmüller Interface GmbH & Co. KG**  
 Klingenbergstraße 26  
 D-32758 Detmold  
 Germany

www.weidmueller.com

## Accessories

## WS 12/5

**WS/ DEK**

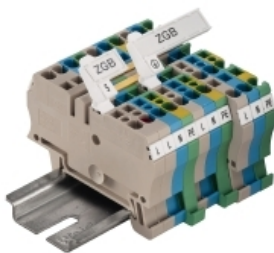
MultiMark terminal markers use an innovative composite material made from two components. The hard base contour of the marker snaps securely into the connector. The elastic surface finish makes the marker easy to mount. This specially punched material enables the strips to be stretched to accommodate the slight variations in spacing that tend to add up, especially with long terminal blocks. Another advantage: the excellent printability of the surface material guarantees durable and wear-resistant labelling. A print resolution of 300 dpi also produces a very legible script.

**Your benefits with MultiMark**

- Firm hold and durable printing
- Continuous strips save installation time
- Easy mounting thanks to an innovative composite material
- Large label field for optimal legibility
- High flexibility thanks to manufacturer independence

**General ordering data**

Type	WS 12/5 MM WS	Version
Order No.	<a href="#">2007190000</a>	WS, Terminal marker, 12 x 5 mm, Weidmueller, white
GTIN (EAN)	4050118392036	
Qty.	800 Stück	

**ZGB pivotable group tag holder**

The ZGB 15 is a hinged group tag carrier. The tag carrier can hold the dekafix 5, WS 12/5 terminal markers or the inlay tag ESO 15.

The ZGB 30 is a hinged group tag carrier. The tag carrier can hold the dekafix 5, WS 12/5 terminal markers or the inlay tag ESO 7.

Inlay tags and protective strips can be found under "Accessories".

**General ordering data**

Type	ZGB 30	Version
Order No.	<a href="#">1611930000</a>	Terminal markers, Terminal marker, 32 x 7 mm, Pitch in mm (P): 5.00
GTIN (EAN)	4008190002251	Weidmueller, white
Qty.	20 Stück	
Type	ZGB 15	Version
Order No.	<a href="#">1636530000</a>	Terminal markers, Terminal marker, 15 x 7 mm, Pitch in mm (P): 5.00
GTIN (EAN)	4008190297053	Weidmueller, white
Qty.	20 Stück	