

Feed-through terminal block - TB 3 I



3059786

<https://www.phoenixcontact.com/il/products/3059786>

Please be informed that the data shown in this PDF document is generated from our Online Catalog. Please find the complete data in the user documentation. Our General Terms of Use for Downloads are valid.



Feed-through terminal block, nom. voltage: 800 V, nominal current: 24 A, connection method: Screw connection, cross section: 0.5 mm² - 4 mm², mounting type: NS 35/7,5, NS 35/15, NS 32, color: dark gray

Commercial Data

Item number	3059786
Packing unit	50 pc
Minimum order quantity	50 pc
Product Key	BE1411
GTIN	4046356643474
Weight per Piece (including packing)	6.467 g
Weight per Piece (excluding packing)	6.467 g
Customs tariff number	85369010
Country of origin	CN

Feed-through terminal block - TB 3 I



3059786

<https://www.phoenixcontact.com/il/products/3059786>

Technical Data

Product properties

Product type	Feed-through terminal block
Number of connections	2
Number of rows	1
Potentials	1

Insulation characteristics

Overvoltage category	III
Degree of pollution	3

Electrical properties

Rated surge voltage	8 kV
Maximum power dissipation for nominal condition	0.77 W

Connection data

Number of connections per level	2
Nominal cross section	2.5 mm ²

Level 1 above 1 below 1

Screw thread	M2,5
Tightening torque	0.4 ... 0.5 Nm
Stripping length	8 mm
Conductor cross section solid	0.5 mm ² ... 4 mm ²
Cross section AWG	20 ... 12 (converted acc. to IEC)
Conductor cross section flexible	0.5 mm ² ... 2.5 mm ²
Conductor cross section, flexible [AWG]	20 ... 14 (converted acc. to IEC)
Flexible conductor cross section flexible (ferrule, w/o plastic sleeve)	0.5 mm ² ... 2.5 mm ²
Flexible conductor cross section (ferrule with plastic sleeve)	5 mm ² ... 2.5 mm ²
Conductor cross-section flexible (2 conductors with the same cross-section, with TWIN ferrule and plastic sleeve)	0.5 mm ² ... 1.5 mm ²
Cross-section with insertion bridge, rigid	0.5 mm ² ... 2.5 mm ²
Cross-section with insertion bridge, flexible	0.5 mm ² ... 2.5 mm ²
2 conductors with same cross section, solid	0.2 mm ² ... 1.5 mm ²
2 conductors with the same cross-section AWG rigid	24 ... 14 (converted acc. to IEC)
2 conductors with same cross section, flexible	0.2 mm ² ... 1.5 mm ²
2 conductors with the same cross-section AWG flexible	24 ... 14 (converted acc. to IEC)
2 conductors with same cross section, flexible, with ferrule without plastic sleeve	0.2 mm ² ... 1 mm ²
Nominal current	24 A
Maximum load current	24 A (with a 2.5 mm ² conductor cross section)
Nominal voltage	800 V

Feed-through terminal block - TB 3 I



3059786

<https://www.phoenixcontact.com/il/products/3059786>

Dimensions

Width	5.2 mm
Height NS 35/15	54.5 mm
Height NS 35/7,5	47 mm
Height NS 32	52 mm
Length	42.5 mm

Material specifications

Color	dark gray
Flammability rating according to UL 94	V0
Insulating material group	I
Insulating material	PA
Static insulating material application in cold	-60 °C
Temperature index of insulation material (DIN EN 60216-1 (VDE 0304-21))	130 °C
Relative insulation material temperature index (Elec., UL 746 B)	130 °C

Electrical tests

Surge voltage test

Test voltage setpoint	9.8 kV
Result	Test passed

Temperature-rise test

Requirement temperature-rise test	Increase in temperature \leq 45 K
Result	Test passed
Short-time withstand current 2.5 mm ²	0.3 kA
Result	Test passed

Power-frequency withstand voltage

Test voltage setpoint	2 kV
Result	Test passed

Mechanical properties

Mechanical data

Open side panel	Yes
-----------------	-----

Mechanical tests

Mechanical strength

Result	Test passed
--------	-------------

Attachment on the carrier

DIN rail/fixing support	NS 32/NS 35
Test force setpoint	1 N
Result	Test passed

Feed-through terminal block - TB 3 I



3059786

<https://www.phoenixcontact.com/il/products/3059786>

Test for conductor damage and slackening

Rotation speed	10 rpm
Revolutions	135
Conductor cross section/weight	0.5 mm ² / 0.3 kg
	2.5 mm ² / 0.7 kg
	4 mm ² / 0.9 kg
Result	Test passed

Environmental and real-life conditions

Needle-flame test

Time of exposure	30 s
Result	Test passed

Ambient conditions

Ambient temperature (operation)	-60 °C ... 105 °C (max. short-term operating temperature RTI Elec.)
Ambient temperature (storage/transport)	-25 °C ... 60 °C (for a short time, not exceeding 24 h, -60 °C to +70 °C)
Ambient temperature (assembly)	-5 °C ... 70 °C
Ambient temperature (actuation)	-5 °C ... 70 °C
Permissible humidity (storage/transport)	30 % ... 70 %

Mounting

Mounting type	NS 35/7,5
	NS 35/15
	NS 32

Feed-through terminal block - TB 3 I

3059786

<https://www.phoenixcontact.com/il/products/3059786>



Drawings

Circuit diagram



Feed-through terminal block - TB 3 I



3059786

<https://www.phoenixcontact.com/il/products/3059786>

Approvals



EAC

Approval ID: RU C-DE.A*30.B.01742



cULus Recognized

Approval ID: E60425

	Nominal Voltage U_N	Nominal Current I_N	Cross Section AWG	Cross Section mm^2
Use group B				
	600 V	20 A	20 - 12	-
Use group C				
	600 V	20 A	20 - 12	-

Feed-through terminal block - TB 3 I



3059786

<https://www.phoenixcontact.com/il/products/3059786>

Classifications

ECLASS

ECLASS-9.0	27141120
ECLASS-10.0.1	27141120
ECLASS-11.0	27141120

ETIM

ETIM 8.0	EC000897
----------	----------

UNSPSC

UNSPSC 21.0	39121400
-------------	----------

Feed-through terminal block - TB 3 I



3059786

<https://www.phoenixcontact.com/il/products/3059786>

Environmental Product Compliance

China RoHS	Environmentally friendly use period: unlimited = EFUP-e
	No hazardous substances above threshold values

Feed-through terminal block - TB 3 I

3059786

<https://www.phoenixcontact.com/il/products/3059786>

Accessories

 Note: Applying some accessories below might limit this product.

Isolator bridge bar

Isolator bridge bar - SCBI 10- 5 ISO - 3251218

<https://www.phoenixcontact.com/il/products/3251218>



Isolator bridge bar, for switchable cross bridges, with insulating collar, color: silver

Screw bridge

Screw bridge - SCBI 10-5 N W - 3000833

<https://www.phoenixcontact.com/il/products/3000833>



Screw bridge, with spring washer and insulating collar, color: silver

 Max. current carrying capacity: 24 A

Feed-through terminal block - TB 3 I

3059786

<https://www.phoenixcontact.com/il/products/3059786>



Insertion bridge

Insertion bridge - INB 10-5 - 3246175

<https://www.phoenixcontact.com/il/products/3246175>



Insertion bridge, Bridging in the terminal point, pitch: 5 mm, color: gray

 Max. current carrying capacity: 24 A

Separating plate

Separating plate - TS-TB - 3062838

<https://www.phoenixcontact.com/il/products/3062838>



Separating plate, for electrical isolation of neighboring bridges in the terminal center, length: 22 mm, height: 22 mm, color: dark gray

Feed-through terminal block - TB 3 I

3059786

<https://www.phoenixcontact.com/il/products/3059786>



Female test connector

Female test connector - TPS 3/10/4 - 3246230

<https://www.phoenixcontact.com/il/products/3246230>



Female test connector, for 2.3 mm test plugs, for screwing into the bridge shaft, color: silver

Screwdriver

Screwdriver - SZS 0,6X3,5 VDE - 1212602

<https://www.phoenixcontact.com/il/products/1212602>



Screwdriver, slot-headed, VDE insulated, size: 0.6 x 3.5 x 100 mm, 2-component grip, with non-slip grip

Feed-through terminal block - TB 3 I

3059786

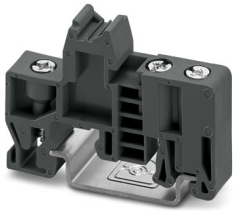
<https://www.phoenixcontact.com/il/products/3059786>

End clamp

End clamp - E/TB - 3246966

<https://www.phoenixcontact.com/il/products/3246966>

End clamp, for assembly on NS 32 or NS 35/7.5 DIN rail



Cover

Cover - D-TB 4/10 - 3059809

<https://www.phoenixcontact.com/il/products/3059809>

Cover, length: 42.5 mm, width: 1.8 mm, height: 35.9 mm, color: dark gray



Feed-through terminal block - TB 3 I

3059786

<https://www.phoenixcontact.com/il/products/3059786>

Test plugs

Test plugs - MPS-MT - 0201744

<https://www.phoenixcontact.com/il/products/0201744>



Test plugs, with solder connection up to 1 mm² conductor cross section, color: gray

Insulating sleeve

Insulating sleeve - MPS-IH WH - 0201663

<https://www.phoenixcontact.com/il/products/0201663>



Insulating sleeve, color: white

Feed-through terminal block - TB 3 I

3059786

<https://www.phoenixcontact.com/il/products/3059786>

Insulating sleeve

Insulating sleeve - MPS-IH RD - 0201676

<https://www.phoenixcontact.com/il/products/0201676>

Insulating sleeve, color: red

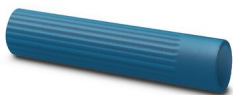


Insulating sleeve

Insulating sleeve - MPS-IH BU - 0201689

<https://www.phoenixcontact.com/il/products/0201689>

Insulating sleeve, color: blue



Feed-through terminal block - TB 3 I

3059786

<https://www.phoenixcontact.com/il/products/3059786>



Insulating sleeve

Insulating sleeve - MPS-IH YE - 0201692

<https://www.phoenixcontact.com/il/products/0201692>

Insulating sleeve, color: yellow



Insulating sleeve

Insulating sleeve - MPS-IH GN - 0201702

<https://www.phoenixcontact.com/il/products/0201702>

Insulating sleeve, color: green



Feed-through terminal block - TB 3 I

3059786

<https://www.phoenixcontact.com/il/products/3059786>

Insulating sleeve

Insulating sleeve - MPS-IH GY - 0201728

<https://www.phoenixcontact.com/il/products/0201728>

Insulating sleeve, color: gray



Insulating sleeve

Insulating sleeve - MPS-IH BK - 0201731

<https://www.phoenixcontact.com/il/products/0201731>

Insulating sleeve, color: black



Phoenix Contact 2023 © - all rights reserved
<https://www.phoenixcontact.com>

PHOENIX CONTACT Israel Ltd.
P.O.B. 1799 Industrial Park Hasharon
Quadima 60920
+972-9-8915700
info@phoenixcontact.co.il