

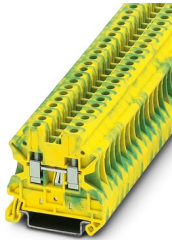
Ground modular terminal block - UT 4-PE



3044128

<https://www.phoenixcontact.com/pc/products/3044128>

Please be informed that the data shown in this PDF document is generated from our Online Catalog. Please find the complete data in the user documentation. Our General Terms of Use for Downloads are valid.



Ground modular terminal block, number of connections: 2, connection method: Screw connection, cross section: 0.14 mm² - 6 mm², mounting type: NS 35/7,5, NS 35/15, color: green-yellow

Your advantages

- Tested for railway applications

Commercial Data

Item number	3044128
Packing unit	50 pc
Minimum order quantity	1 pc
Product Key	BE1121
Catalog Page	Page 159 (C-1-2019)
GTIN	4017918960407
Weight per Piece (including packing)	13.382 g
Weight per Piece (excluding packing)	12.7 g
Customs tariff number	85369010
Country of origin	DE

Technical Data

Product properties

Product type	Ground terminal block
Area of application	Railway industry
	Machine building
	Plant engineering
	Process industry
Number of connections	2
Number of rows	1

Insulation characteristics

Overvoltage category	III
Degree of pollution	3

Electrical properties

Rated surge voltage	8 kV
Maximum power dissipation for nominal condition	1.02 W

Connection data

Grounding foot	Yes
Number of connections per level	2
Nominal cross section	4 mm ²

Level 1 above 1 below 1

Screw thread	M3
Note	Please observe the current carrying capacity of the DIN rails.
Tightening torque	0.6 ... 0.8 Nm
Stripping length	9 mm
Internal cylindrical gage	A4
Connection in acc. with standard	IEC 60947-7-2
Conductor cross section solid	0.14 mm ² ... 6 mm ²
Cross section AWG	26 ... 10 (converted acc. to IEC)
Conductor cross section flexible	0.14 mm ² ... 6 mm ²
Conductor cross section, flexible [AWG]	26 ... 10 (converted acc. to IEC)
Flexible conductor cross section flexible (ferrule, w/o plastic sleeve)	0.25 mm ² ... 4 mm ²
Flexible conductor cross section (ferrule with plastic sleeve)	0.25 mm ² ... 4 mm ²
Note	Note: Product releases, connection cross sections and notes on connecting aluminum cables can be found in the download area.

Ex data

Rated data (ATEX/IECEx)

Identification	<input type="checkbox"/> II 2 GD Ex eb IIC Gb
----------------	---

Ground modular terminal block - UT 4-PE



3044128

<https://www.phoenixcontact.com/pc/products/3044128>

Operating temperature range	-60 °C ... 110 °C
Ex-certified accessories	3047028 D-UT 2,5/10
	1205053 SZS 0,6X3,5
	3022276 CLIPFIX 35-5
	3022218 CLIPFIX 35
output	(Permanent)

Ex connection data General

Torque range	0.6 Nm ... 0.8 Nm
Nominal cross section	4 mm ²
Rated cross section AWG	12
Connection capacity rigid	0.14 mm ² ... 6 mm ²
Connection capacity AWG	26 ... 10
Connection capacity flexible	0.14 mm ² ... 4 mm ²
Connection capacity AWG	26 ... 12

Dimensions

Width	6.2 mm
End cover width	2.2 mm
Height	46.9 mm
Height NS 35/15	55 mm
Height NS 35/7,5	47.5 mm
Length	47.7 mm

Material specifications

Color	green-yellow
Flammability rating according to UL 94	V0
Insulating material group	I
Insulating material	PA
Static insulating material application in cold	-60 °C
Temperature index of insulation material (DIN EN 60216-1 (VDE 0304-21))	125 °C
Relative insulation material temperature index (Elec., UL 746 B)	130 °C
Fire protection for rail vehicles (DIN EN 45545-2) R22	HL 1 - HL 3
Fire protection for rail vehicles (DIN EN 45545-2) R23	HL 1 - HL 3
Fire protection for rail vehicles (DIN EN 45545-2) R24	HL 1 - HL 3
Fire protection for rail vehicles (DIN EN 45545-2) R26	HL 1 - HL 3
Calorimetric heat release NFPA 130 (ASTM E 1354)	27,5 MJ/kg
Surface flammability NFPA 130 (ASTM E 162)	passed
Specific optical density of smoke NFPA 130 (ASTM E 662)	passed
Smoke gas toxicity NFPA 130 (SMP 800C)	passed

Mechanical properties

Mechanical data

Ground modular terminal block - UT 4-PE



3044128

<https://www.phoenixcontact.com/pc/products/3044128>

Open side panel	Yes
-----------------	-----

Environmental and real-life conditions

Ambient conditions

Ambient temperature (operation)	-60 °C ... 105 °C (max. short-term operating temperature RTI Elec.)
Ambient temperature (storage/transport)	-25 °C ... 60 °C (for a short time, not exceeding 24 h, -60 °C to +70 °C)
Ambient temperature (assembly)	-5 °C ... 70 °C
Ambient temperature (actuation)	-5 °C ... 70 °C
Permissible humidity (storage/transport)	30 % ... 70 %

Standards and regulations

Connection in acc. with standard	IEC 60947-7-2
----------------------------------	---------------

Mounting

Mounting type	NS 35/7,5
	NS 35/15

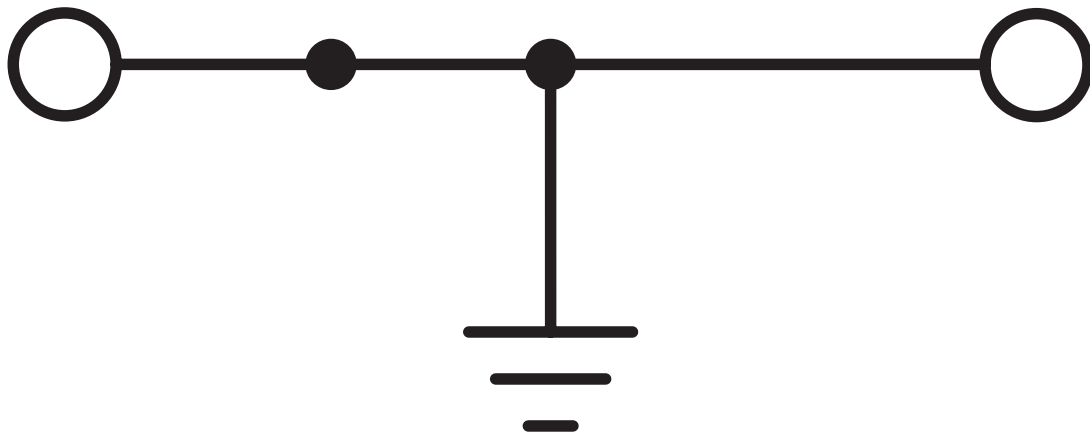
Ground modular terminal block - UT 4-PE

3044128

<https://www.phoenixcontact.com/pc/products/3044128>

Drawings

Circuit diagram



Ground modular terminal block - UT 4-PE



3044128

<https://www.phoenixcontact.com/pc/products/3044128>

Approvals

DNV Approval ID: TAE00001S9				
---------------------------------------	--	--	--	--

CSA Approval ID: 13631				
	Nominal Voltage U_N	Nominal Current I_N	Cross Section AWG	Cross Section mm^2
Use group B			26 - 10	-
Use group C			26 - 10	-

IECEE CB Scheme Approval ID: DE1-63045				
	Nominal Voltage U_N	Nominal Current I_N	Cross Section AWG	Cross Section mm^2
			-	-

EAC Approval ID: RU C-DE.A*30.B.01742				
---	--	--	--	--

cULus Recognized Approval ID: E60425				
	Nominal Voltage U_N	Nominal Current I_N	Cross Section AWG	Cross Section mm^2
Use group B			26 - 10	-
Multi-conductor connection			26 - 14	-
Use group C			26 - 10	-
Multi-conductor connection			26 - 14	-
Use group D			26 - 10	-
Multi-conductor connection			26 - 14	-

RS Approval ID: 22.44.01.00083.250				
--	--	--	--	--

Ground modular terminal block - UT 4-PE



3044128

<https://www.phoenixcontact.com/pc/products/3044128>



VDE Gutachten mit Fertigungsüberwachung

Approval ID: 40013715

Nominal Voltage U_N

Nominal Current I_N

Cross Section AWG

Cross Section mm^2

-

0.2 - 4



ATEX

Approval ID: KEMA04ATEX2048U



EAC Ex

Approval ID: RU C-DE.HA91.B.00066



IEC Ex

Approval ID: IECEx KEM 06.0027U



CCC

Approval ID: 2020322313000622



NEPSI

Approval ID: GYJ20.1194U



UKCA-EX

Approval ID: DEKRA 21UKEX0304U

Ground modular terminal block - UT 4-PE



3044128

<https://www.phoenixcontact.com/pc/products/3044128>

Classifications

ECLASS

ECLASS-9.0	27141141
ECLASS-10.0.1	27141141
ECLASS-11.0	27141141

ETIM

ETIM 8.0	EC000901
----------	----------

UNSPSC

UNSPSC 21.0	39121400
-------------	----------

Ground modular terminal block - UT 4-PE



3044128

<https://www.phoenixcontact.com/pc/products/3044128>

Environmental Product Compliance

REACH SVHC	Lead 7439-92-1
China RoHS	Environmentally Friendly Use Period = 50 years
	For information on hazardous substances, refer to the manufacturer's declaration available under "Downloads"

Ground modular terminal block - UT 4-PE

3044128

<https://www.phoenixcontact.com/pc/products/3044128>

Accessories

Plug-in bridge

Plug-in bridge - FBS 2-6 - 3030336

<https://www.phoenixcontact.com/pc/products/3030336>



Plug-in bridge, pitch: 6.2 mm, color: red

Plug-in bridge

Plug-in bridge - FBS 3-6 - 3030242

<https://www.phoenixcontact.com/pc/products/3030242>



Plug-in bridge, pitch: 6.2 mm, color: red

Ground modular terminal block - UT 4-PE

3044128

<https://www.phoenixcontact.com/pc/products/3044128>

Plug-in bridge

Plug-in bridge - FBS 4-6 - 3030255

<https://www.phoenixcontact.com/pc/products/3030255>



Plug-in bridge, pitch: 6.2 mm, color: red

Plug-in bridge

Plug-in bridge - FBS 5-6 - 3030349

<https://www.phoenixcontact.com/pc/products/3030349>



Plug-in bridge, pitch: 6.2 mm, color: red

Ground modular terminal block - UT 4-PE

3044128

<https://www.phoenixcontact.com/pc/products/3044128>

Plug-in bridge

Plug-in bridge - FBS 6-6 - 1008238

<https://www.phoenixcontact.com/pc/products/1008238>



Plug-in bridge, One side not fully isolated, pitch: 6.2 mm, color: red

Plug-in bridge

Plug-in bridge - FBS 10-6 - 3030271

<https://www.phoenixcontact.com/pc/products/3030271>



Plug-in bridge, pitch: 6.2 mm, color: red

Ground modular terminal block - UT 4-PE

3044128

<https://www.phoenixcontact.com/pc/products/3044128>

Plug-in bridge

Plug-in bridge - FBS 20-6 - 3030365

<https://www.phoenixcontact.com/pc/products/3030365>



Plug-in bridge, pitch: 6.2 mm, color: red

Plug-in bridge

Plug-in bridge - FBS 50-6 - 3032224

<https://www.phoenixcontact.com/pc/products/3032224>



Plug-in bridge, pitch: 6.2 mm, color: red

Ground modular terminal block - UT 4-PE

3044128

<https://www.phoenixcontact.com/pc/products/3044128>

Plug-in bridge

Plug-in bridge - FBSR 2-6 - 3033715

<https://www.phoenixcontact.com/pc/products/3033715>



Plug-in bridge, pitch: 6.2 mm, color: red

Plug-in bridge

Plug-in bridge - FBSR 3-6 - 3001594

<https://www.phoenixcontact.com/pc/products/3001594>



Plug-in bridge, pitch: 6.2 mm, color: red

Ground modular terminal block - UT 4-PE

3044128

<https://www.phoenixcontact.com/pc/products/3044128>

Plug-in bridge

Plug-in bridge - FBSR 4-6 - 3001595

<https://www.phoenixcontact.com/pc/products/3001595>



Plug-in bridge, pitch: 6.2 mm, color: red

Plug-in bridge

Plug-in bridge - FBSR 5-6 - 3001596

<https://www.phoenixcontact.com/pc/products/3001596>



Plug-in bridge, pitch: 6.2 mm, color: red

Ground modular terminal block - UT 4-PE

3044128

<https://www.phoenixcontact.com/pc/products/3044128>

Plug-in bridge

Plug-in bridge - FBSR 10-6 - 3033716

<https://www.phoenixcontact.com/pc/products/3033716>

Plug-in bridge, pitch: 6.2 mm, color: red



Short-circuit connector

Short-circuit connector - FBSRH 2-6 - 3033812

<https://www.phoenixcontact.com/pc/products/3033812>

Short-circuit connector, pitch: 6.2 mm, color: red



Ground modular terminal block - UT 4-PE

3044128

<https://www.phoenixcontact.com/pc/products/3044128>

Plug-in bridge

Plug-in bridge - FBS 2-6 BU - 3036932

<https://www.phoenixcontact.com/pc/products/3036932>



Plug-in bridge, pitch: 6.2 mm, color: blue

Plug-in bridge

Plug-in bridge - FBS 3-6 BU - 3036945

<https://www.phoenixcontact.com/pc/products/3036945>



Plug-in bridge, pitch: 6.2 mm, color: blue

Ground modular terminal block - UT 4-PE

3044128

<https://www.phoenixcontact.com/pc/products/3044128>

Plug-in bridge

Plug-in bridge - FBS 4-6 BU - 3036958

<https://www.phoenixcontact.com/pc/products/3036958>



Plug-in bridge, pitch: 6.2 mm, color: blue

Plug-in bridge

Plug-in bridge - FBS 5-6 BU - 3036961

<https://www.phoenixcontact.com/pc/products/3036961>



Plug-in bridge, pitch: 6.2 mm, color: blue

Ground modular terminal block - UT 4-PE

3044128

<https://www.phoenixcontact.com/pc/products/3044128>

Plug-in bridge

Plug-in bridge - FBS 10-6 BU - 3032198

<https://www.phoenixcontact.com/pc/products/3032198>

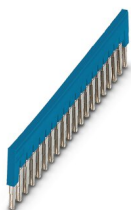


Plug-in bridge, pitch: 6.2 mm, color: blue

Plug-in bridge

Plug-in bridge - FBS 20-6 BU - 3032208

<https://www.phoenixcontact.com/pc/products/3032208>



Plug-in bridge, pitch: 6.2 mm, color: blue

Ground modular terminal block - UT 4-PE

3044128

<https://www.phoenixcontact.com/pc/products/3044128>

Plug-in bridge

Plug-in bridge - FBS 50-6 BU - 3032211

<https://www.phoenixcontact.com/pc/products/3032211>



Plug-in bridge, pitch: 6.2 mm, color: blue

End cover

End cover - D-UT 2,5/10 - 3047028

<https://www.phoenixcontact.com/pc/products/3047028>



End cover, length: 47 mm, width: 2.2 mm, height: 39.8 mm, color: gray

Ground modular terminal block - UT 4-PE

3044128

<https://www.phoenixcontact.com/pc/products/3044128>

Partition plate

Partition plate - ATP-UT - 3047167

<https://www.phoenixcontact.com/pc/products/3047167>



Partition plate, length: 53.4 mm, width: 2.2 mm, height: 45.7 mm, color: gray

Screwdriver

Screwdriver - SZS 0,6X3,5 - 1205053

<https://www.phoenixcontact.com/pc/products/1205053>



Actuation tool, for ST terminal blocks, insulated, also suitable for use as a bladed screwdriver, size: 0.6 x 3.5 x 100 mm, 2-component grip, with non-slip grip

Ground modular terminal block - UT 4-PE

3044128

<https://www.phoenixcontact.com/pc/products/3044128>

Marker pen

Marker pen - X-PEN 0,35 - 0811228

<https://www.phoenixcontact.com/pc/products/0811228>



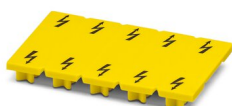
Marker pen without ink cartridge, for manual labeling of markers, labeling extremely wipe-proof, line thickness 0.35 mm

Warning label

Warning label - WS UT 4 - 3047332

<https://www.phoenixcontact.com/pc/products/3047332>

Warning sign for UT terminal blocks



Ground modular terminal block - UT 4-PE

3044128

<https://www.phoenixcontact.com/pc/products/3044128>

Screwdriver

Screwdriver - SF-SL 0,6X3,5-100 S-VDE - 1212587

<https://www.phoenixcontact.com/pc/products/1212587>



Actuation tool, for ST terminal blocks, VDE insulated, with slimmer insulation integrated in the blade, also suitable for use as a bladed screwdriver, size: 0.6 x 3.5 x 100 mm, 2-component grip, with non-slip grip

DIN rail perforated

DIN rail perforated - NS 35/ 7,5 PERF 2000MM - 0801733

<https://www.phoenixcontact.com/pc/products/0801733>



DIN rail perforated, acc. to EN 60715, material: Steel, galvanized, passivated with a thick layer, Standard profile, color: silver, Pack of 25 (50 m)

Ground modular terminal block - UT 4-PE

3044128

<https://www.phoenixcontact.com/pc/products/3044128>

DIN rail, unperforated

DIN rail, unperforated - NS 35/ 7,5 UNPERF 2000MM - 0801681

<https://www.phoenixcontact.com/pc/products/0801681>



DIN rail, unperforated, acc. to EN 60715, material: Steel, galvanized, passivated with a thick layer, Standard profile, color: silver, Pack of 25 (50 m)

DIN rail perforated

DIN rail perforated - NS 35/ 7,5 WH PERF 2000MM - 1204119

<https://www.phoenixcontact.com/pc/products/1204119>



DIN rail perforated, acc. to EN 60715, material: Steel, Galvanized, white passivated, Standard profile, color: silver, Pack of 25 (50 m)

Ground modular terminal block - UT 4-PE

3044128

<https://www.phoenixcontact.com/pc/products/3044128>

DIN rail, unperforated

DIN rail, unperforated - NS 35/ 7,5 WH UNPERF 2000MM-VPE 10 - 1204122

<https://www.phoenixcontact.com/pc/products/1204122>



DIN rail, unperforated, acc. to EN 60715, material: Steel, Galvanized, white passivated, Standard profile, color: silver, Pack of 10 (20 m)

DIN rail, unperforated

DIN rail, unperforated - NS 35/ 7,5 AL UNPERF 2000MM - 0801704

<https://www.phoenixcontact.com/pc/products/0801704>



DIN rail, unperforated, acc. to EN 60715, material: Aluminum, uncoated, Standard profile, color: silver, Pack of 25 (50 m)

Ground modular terminal block - UT 4-PE

3044128

<https://www.phoenixcontact.com/pc/products/3044128>

DIN rail perforated

DIN rail perforated - NS 35/ 7,5 ZN PERF 2000MM - 1206421

<https://www.phoenixcontact.com/pc/products/1206421>



DIN rail perforated, acc. to EN 60715, material: Steel, galvanized, Standard profile, color: silver, Pack of 25 (50 m)

DIN rail, unperforated

DIN rail, unperforated - NS 35/ 7,5 ZN UNPERF 2000MM - 1206434

<https://www.phoenixcontact.com/pc/products/1206434>



DIN rail, unperforated, acc. to EN 60715, material: Steel, galvanized, Standard profile, color: silver, Pack of 25 (50 m)

Ground modular terminal block - UT 4-PE

3044128

<https://www.phoenixcontact.com/pc/products/3044128>

DIN rail, unperforated

DIN rail, unperforated - NS 35/ 7,5 CU UNPERF 2000MM-VPE 10 - 0801762

<https://www.phoenixcontact.com/pc/products/0801762>



DIN rail, unperforated, acc. to EN 60715, material: Copper, uncoated, Standard profile, color: copper-colored, Pack of 10 (20 m)

End cap

End cap - NS 35/ 7,5 CAP - 1206560

<https://www.phoenixcontact.com/pc/products/1206560>

DIN rail end piece, for DIN rail NS 35/7.5



Ground modular terminal block - UT 4-PE

3044128

<https://www.phoenixcontact.com/pc/products/3044128>

DIN rail perforated

DIN rail perforated - NS 35/15 PERF 2000MM - 1201730

<https://www.phoenixcontact.com/pc/products/1201730>



DIN rail perforated, similar to EN 60715, material: Steel, galvanized, passivated with a thick layer, Standard profile, color: silver, Pack of 25 (50 m)

DIN rail, unperforated

DIN rail, unperforated - NS 35/15 UNPERF 2000MM - 1201714

<https://www.phoenixcontact.com/pc/products/1201714>



DIN rail, unperforated, similar to EN 60715, material: Steel, galvanized, passivated with a thick layer, Standard profile, color: silver, Pack of 25 (50 m)

Ground modular terminal block - UT 4-PE

3044128

<https://www.phoenixcontact.com/pc/products/3044128>

DIN rail perforated

DIN rail perforated - NS 35/15 WH PERF 2000MM - 0806602

<https://www.phoenixcontact.com/pc/products/0806602>



DIN rail perforated, similar to EN 60715, material: Steel, Galvanized, white passivated, Standard profile, color: white, Pack of 25 (50 m)

DIN rail, unperforated

DIN rail, unperforated - NS 35/15 WH UNPERF 2000MM-VPE 10 - 1204135

<https://www.phoenixcontact.com/pc/products/1204135>



DIN rail, unperforated, similar to EN 60715, material: Steel, Galvanized, white passivated, Standard profile, color: silver, Pack of 10 (20 m)

Ground modular terminal block - UT 4-PE

3044128

<https://www.phoenixcontact.com/pc/products/3044128>

DIN rail, unperforated

DIN rail, unperforated - NS 35/15 AL UNPERF 2000MM - 1201756

<https://www.phoenixcontact.com/pc/products/1201756>



DIN rail, unperforated, similar to EN 60715, material: Aluminum, uncoated, Standard profile, color: silver

DIN rail perforated

DIN rail perforated - NS 35/15 ZN PERF 2000MM - 1206599

<https://www.phoenixcontact.com/pc/products/1206599>



DIN rail perforated, similar to EN 60715, material: Steel, galvanized, Standard profile, color: silver, Pack of 25 (50 m)

Ground modular terminal block - UT 4-PE

3044128

<https://www.phoenixcontact.com/pc/products/3044128>

DIN rail, unperforated

DIN rail, unperforated - NS 35/15 ZN UNPERF 2000MM - 1206586

<https://www.phoenixcontact.com/pc/products/1206586>



DIN rail, unperforated, similar to EN 60715, material: Steel, galvanized, Standard profile, color: silver, Pack of 25 (50 m)

DIN rail, unperforated

DIN rail, unperforated - NS 35/15 CU UNPERF 2000MM-VPE 10 - 1201895

<https://www.phoenixcontact.com/pc/products/1201895>



DIN rail, unperforated, similar to EN 60715, material: Copper, uncoated, Standard profile, color: copper-colored, Pack of 10 (20 m)

Ground modular terminal block - UT 4-PE

3044128

<https://www.phoenixcontact.com/pc/products/3044128>

End cap

End cap - NS 35/15 CAP - 1206573

<https://www.phoenixcontact.com/pc/products/1206573>

DIN rail end piece, for DIN rail NS 35/15



DIN rail, unperforated

DIN rail, unperforated - NS 35/15-2,3 UNPERF 2000MM-VPE 10 - 1201798

<https://www.phoenixcontact.com/pc/products/1201798>



DIN rail, unperforated, acc. to EN 60715, material: Steel, galvanized, passivated with a thick layer, Standard profile 2.3 mm, color: silver, Pack of 10 (20 m)

Ground modular terminal block - UT 4-PE

3044128

<https://www.phoenixcontact.com/pc/products/3044128>

Zack marker strip

Zack marker strip - ZB 6:UNBEDRUCKT - 1051003

<https://www.phoenixcontact.com/pc/products/1051003>



Zack marker strip, Strip, white, unlabeled, can be labeled with: PLOTMARK, CMS-P1-PLOTTER, mounting type: snapped, for terminal block width: 6.2 mm, lettering field size: 6.15 x 10.5 mm, Number of individual labels: 10

Zack marker strip

Zack marker strip - ZB 6 CUS - 0824992

<https://www.phoenixcontact.com/pc/products/0824992>



Zack marker strip, can be ordered: Strip, white, labeled according to customer specifications, mounting type: snap into tall marker groove, for terminal block width: 6.2 mm, lettering field size: 6.15 x 10.5 mm, Number of individual labels: 10

Ground modular terminal block - UT 4-PE

3044128

<https://www.phoenixcontact.com/pc/products/3044128>

Zack marker strip

Zack marker strip - ZB 6,LGS:FORTL.ZAHLEN - 1051016

<https://www.phoenixcontact.com/pc/products/1051016>

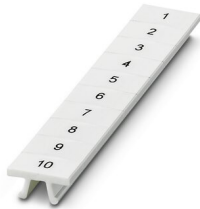


Zack marker strip, Strip, white, labeled, can be labeled with: CMS-P1-PLOTTER, printed horizontally: consecutive numbers 1 ... 10, 11 ... 20, etc. up to 491 ... 500, mounting type: snapped, for terminal block width: 6.2 mm, lettering field size: 6. 15 x 10.5 mm, Number of individual labels: 10

Zack marker strip

Zack marker strip - ZB 6,QR:FORTL.ZAHLEN - 1051029

<https://www.phoenixcontact.com/pc/products/1051029>



Zack marker strip, Strip, white, labeled, can be labeled with: CMS-P1-PLOTTER, Printed vertically: consecutive numbers 1 ... 10, 11 ... 20, etc. up to 491 ... 500, mounting type: snapped, for terminal block width: 6.2 mm, lettering field size: 6. 15 x 10.5 mm, Number of individual labels: 10

Ground modular terminal block - UT 4-PE

3044128

<https://www.phoenixcontact.com/pc/products/3044128>

Zack marker strip

Zack marker strip - ZB 6,LGS:GLEICHE ZAHLEN - 1051032

<https://www.phoenixcontact.com/pc/products/1051032>



Zack marker strip, Strip, white, labeled, can be labeled with: CMS-P1-PLOTTER, printed horizontally: Identical numbers 1 or 2, etc. up to 100, mounting type: snapped, for terminal block width: 6.2 mm, lettering field size: 6.15 x 10.5 mm, Number of individual labels: 10

Marker for terminal blocks

Marker for terminal blocks - ZB 6,LGS:L1-N,PE - 1051414

<https://www.phoenixcontact.com/pc/products/1051414>



Marker for terminal blocks, Strip, white, labeled, can be labeled with: CMS-P1-PLOTTER, horizontal: L1, L2, L3, N, PE, L1, L2, L3, N, PE, mounting type: snapped, for terminal block width: 6.2 mm, lettering field size: 6.15 x 10.5 mm, Number of individual labels: 10

Ground modular terminal block - UT 4-PE

3044128

<https://www.phoenixcontact.com/pc/products/3044128>

Marker for terminal blocks

Marker for terminal blocks - ZB 6,LGS:U-N - 1051430

<https://www.phoenixcontact.com/pc/products/1051430>



Marker for terminal blocks, Strip, white, labeled, can be labeled with: CMS-P1-PLOTTER, printed horizontally: U, V, W, N, GND, U, V, W, N, GND, mounting type: snapped, for terminal block width: 6.2 mm, lettering field size: 6.15 x 10.5 mm, Number of individual labels: 10

Marker for terminal blocks

Marker for terminal blocks - UC-TM 6 - 0818085

<https://www.phoenixcontact.com/pc/products/0818085>



Marker for terminal blocks, Sheet, white, unlabeled, can be labeled with: BLUEMARK ID COLOR, BLUEMARK ID, BLUEMARK CLED, PLOTMARK, CMS-P1-PLOTTER, mounting type: snapped, for terminal block width: 6.2 mm, lettering field size: 5.6 x 10.5 mm, Number of individual labels: 80

Ground modular terminal block - UT 4-PE

3044128

<https://www.phoenixcontact.com/pc/products/3044128>

Marker for terminal blocks

Marker for terminal blocks - UC-TM 6 CUS - 0824589

<https://www.phoenixcontact.com/pc/products/0824589>



Marker for terminal blocks, can be ordered: by sheet, white, labeled according to customer specifications, mounting type: snap into tall marker groove, for terminal block width: 6.2 mm, lettering field size: 5.6 x 10.5 mm, Number of individual labels: 80

Marker for terminal blocks

Marker for terminal blocks - UCT-TM 6 - 0828736

<https://www.phoenixcontact.com/pc/products/0828736>



Marker for terminal blocks, Sheet, white, unlabeled, can be labeled with: TOPMARK NEO, TOPMARK LASER, BLUEMARK ID COLOR, BLUEMARK ID, BLUEMARK CLED, THERMOMARK PRIME, THERMOMARK CARD 2.0, THERMOMARK CARD, mounting type: snapped, for terminal block width: 6.2 mm, lettering field size: 5.6 x 10.5 mm, Number of individual labels: 60

Ground modular terminal block - UT 4-PE

3044128

<https://www.phoenixcontact.com/pc/products/3044128>

Marker for terminal blocks

Marker for terminal blocks - UCT-TM 6 CUS - 0829602

<https://www.phoenixcontact.com/pc/products/0829602>



Marker for terminal blocks, can be ordered: by sheet, white, labeled according to customer specifications, mounting type: snap into tall marker groove, for terminal block width: 6.2 mm, lettering field size: 5.6 x 10.5 mm, Number of individual labels: 60

Test plugs

Test plugs - MPS-MT - 0201744

<https://www.phoenixcontact.com/pc/products/0201744>



Test plugs, with solder connection up to 1 mm² conductor cross section, color: gray

Ground modular terminal block - UT 4-PE

3044128

<https://www.phoenixcontact.com/pc/products/3044128>

Insulating sleeve

Insulating sleeve - MPS-IH WH - 0201663

<https://www.phoenixcontact.com/pc/products/0201663>

Insulating sleeve, color: white



Insulating sleeve

Insulating sleeve - MPS-IH RD - 0201676

<https://www.phoenixcontact.com/pc/products/0201676>

Insulating sleeve, color: red



Ground modular terminal block - UT 4-PE

3044128

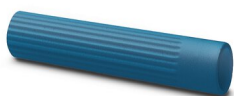
<https://www.phoenixcontact.com/pc/products/3044128>

Insulating sleeve

Insulating sleeve - MPS-IH BU - 0201689

<https://www.phoenixcontact.com/pc/products/0201689>

Insulating sleeve, color: blue



Insulating sleeve

Insulating sleeve - MPS-IH YE - 0201692

<https://www.phoenixcontact.com/pc/products/0201692>

Insulating sleeve, color: yellow



Ground modular terminal block - UT 4-PE

3044128

<https://www.phoenixcontact.com/pc/products/3044128>

Insulating sleeve

Insulating sleeve - MPS-IH GN - 0201702

<https://www.phoenixcontact.com/pc/products/0201702>

Insulating sleeve, color: green



Insulating sleeve

Insulating sleeve - MPS-IH GY - 0201728

<https://www.phoenixcontact.com/pc/products/0201728>

Insulating sleeve, color: gray



Ground modular terminal block - UT 4-PE

3044128

<https://www.phoenixcontact.com/pc/products/3044128>

Insulating sleeve

Insulating sleeve - MPS-IH BK - 0201731

<https://www.phoenixcontact.com/pc/products/0201731>

Insulating sleeve, color: black



Test adapter

Test adapter - PAI-4-FIX-5/6 BU - 3035975

<https://www.phoenixcontact.com/pc/products/3035975>

4 mm test adapter, for terminal blocks with 5.2 mm and 6.2 mm pitch



Ground modular terminal block - UT 4-PE

3044128

<https://www.phoenixcontact.com/pc/products/3044128>

Test adapter

Test adapter - PAI-4-FIX-5/6 OG - 3035974

<https://www.phoenixcontact.com/pc/products/3035974>



4 mm test adapter, for terminal blocks with 5.2 mm and 6.2 mm pitch

Test adapter

Test adapter - PAI-4-FIX-5/6 YE - 3035977

<https://www.phoenixcontact.com/pc/products/3035977>



4 mm test adapter, for terminal blocks with 5.2 mm and 6.2 mm pitch

Ground modular terminal block - UT 4-PE

3044128

<https://www.phoenixcontact.com/pc/products/3044128>

Test adapter

Test adapter - PAI-4-FIX-5/6 RD - 3035976

<https://www.phoenixcontact.com/pc/products/3035976>



4 mm test adapter, for terminal blocks with 5.2 mm and 6.2 mm pitch

Test adapter

Test adapter - PAI-4-FIX-5/6 GN - 3035978

<https://www.phoenixcontact.com/pc/products/3035978>



4 mm test adapter, for terminal blocks with 5.2 mm and 6.2 mm pitch

Ground modular terminal block - UT 4-PE

3044128

<https://www.phoenixcontact.com/pc/products/3044128>

Test adapter

Test adapter - PAI-4-FIX-5/6 BK - 3035980

<https://www.phoenixcontact.com/pc/products/3035980>



4 mm test adapter, for terminal blocks with 5.2 mm and 6.2 mm pitch

Test adapter

Test adapter - PAI-4-FIX-5/6 GY - 3035982

<https://www.phoenixcontact.com/pc/products/3035982>



4 mm test adapter, for terminal blocks with 5.2 mm and 6.2 mm pitch

Ground modular terminal block - UT 4-PE

3044128

<https://www.phoenixcontact.com/pc/products/3044128>

Test adapter

Test adapter - PAI-4-FIX-5/6 VT - 3035979

<https://www.phoenixcontact.com/pc/products/3035979>



4 mm test adapter, for terminal blocks with 5.2 mm and 6.2 mm pitch

Test adapter

Test adapter - PAI-4-FIX-5/6 BN - 3035981

<https://www.phoenixcontact.com/pc/products/3035981>



4 mm test adapter, for terminal blocks with 5.2 mm and 6.2 mm pitch

Ground modular terminal block - UT 4-PE

3044128

<https://www.phoenixcontact.com/pc/products/3044128>

Test adapter

Test adapter - PAI-4-FIX-5/6 WH - 3035983

<https://www.phoenixcontact.com/pc/products/3035983>

4 mm test adapter, for terminal blocks with 5.2 mm and 6.2 mm pitch



Test plugs

Test plugs - PS-6 - 3030996

<https://www.phoenixcontact.com/pc/products/3030996>

Test plugs, Modular test plug, color: red



Ground modular terminal block - UT 4-PE

3044128

<https://www.phoenixcontact.com/pc/products/3044128>

Test plugs

Test plugs - PS-6/2,3MM RD - 3038736

<https://www.phoenixcontact.com/pc/products/3038736>



Test plugs, color: red

End clamp

End clamp - CLIPFIX 35 - 3022218

<https://www.phoenixcontact.com/pc/products/3022218>



Quick mounting end clamp for NS 35/7,5 DIN rail or NS 35/15 DIN rail, with marking option, width: 9.5 mm, color: gray

Ground modular terminal block - UT 4-PE

3044128

<https://www.phoenixcontact.com/pc/products/3044128>

End clamp

End clamp - CLIPFIX 35-5 - 3022276

<https://www.phoenixcontact.com/pc/products/3022276>

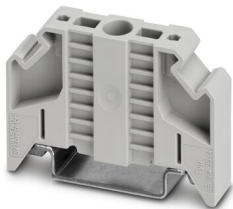


Quick mounting end clamp for NS 35/7,5 DIN rail or NS 35/15 DIN rail, with marking option, with parking option for FBS...5, FBS...6, KSS 5, KSS 6, width: 5.15 mm, color: gray

End clamp

End clamp - E/NS 35 N - 0800886

<https://www.phoenixcontact.com/pc/products/0800886>



End clamp, width: 9.5 mm, color: gray

Ground modular terminal block - UT 4-PE



3044128

<https://www.phoenixcontact.com/pc/products/3044128>

Test adapter

Test adapter - PAI-4-N GY - 3032871

<https://www.phoenixcontact.com/pc/products/3032871>



4 mm test adapter, for terminal blocks with 5.2 mm, 6.2 mm and 8.2 mm pitch

Phoenix Contact 2023 © - all rights reserved

<https://www.phoenixcontact.com>

PHOENIX CONTACT GmbH & Co. KG

Flachsmarktstraße 8

D-32825 Blomberg

+49 (0) 5235-3 00

info@phoenixcontact.com