

Industrial Ethernet Switch - FL SWITCH SFN 16TX



2891933

<https://www.phoenixcontact.com/us/products/2891933>

Please be informed that the data shown in this PDF document is generated from our Online Catalog. Please find the complete data in the user documentation. Our General Terms of Use for Downloads are valid.



Ethernet Switch, 16 TP RJ45 ports, automatic detection of data transmission speed of 10 or 100 Mbps (RJ45), autocrossing function

Product Description

Standard function Ethernet switch with 16 RJ45 ports. Provides automatic detection of data transmission speed of 10 or 100 Mbps (RJ45), autocrossing function, 12 V DC ... 48 V DC input voltage, redundant power supply capable with remote alarming.

Your advantages

- RJ45 ports support a transmission speed of 10/100 Mbps
- Fiber-optic ports support 100 Mbps
- 16 ports in a narrow metal housing with redundant input voltage
- Local diagnostic indicators with LEDs
- Security options with cable locking
- Devices are available for the standard temperature range (0 °C ... 60 °C) and wide temperature range (-40 °C ... 75 °C)
- Auto negotiation and autocrossing detection simplifies installation and setup

Commercial Data

| | |
|--------------------------------------|---------------------|
| Item number | 2891933 |
| Packing unit | 1 pc |
| Minimum order quantity | 1 pc |
| Sales Key | C23 |
| Product Key | DNN113 |
| Catalog Page | Page 293 (C-6-2019) |
| GTIN | 4046356551588 |
| Weight per Piece (including packing) | 1,047 g |
| Weight per Piece (excluding packing) | 870 g |
| Customs tariff number | 85176200 |
| Country of origin | TW |

Technical Data

Dimensions

| | |
|--------|--------|
| Width | 70 mm |
| Height | 135 mm |
| Depth | 110 mm |

Material specifications

| | |
|------------------|----------|
| Housing material | Aluminum |
|------------------|----------|

Mounting

| | |
|---------------|-------------------|
| Mounting type | DIN rail mounting |
|---------------|-------------------|

Interfaces

Ethernet (RJ45)

| | |
|-------------------------------|-----------------------------------|
| Connection method | RJ45 |
| Note on the connection method | Auto negotiation and autocrossing |
| Transmission speed | 10/100 Mbps |
| Transmission physics | Ethernet in RJ45 twisted pair |
| Transmission length | 100 m (per segment) |
| No. of channels | 16 (RJ45 ports) |

Product properties

| | |
|--------------|---|
| Type | Block design |
| Product type | Switch |
| | Unmanaged Switch SFN |
| MTTF | 57.4 Years (MIL-HDBK-217F standard, temperature 25°C, operating cycle 100%) |

Insulation characteristics

| | |
|------------------|---------------------------|
| Protection class | III (VDE 0106, IEC 60536) |
|------------------|---------------------------|

Switch functions

| | |
|----------------------------------|--|
| Basic functions | Unmanaged switch / auto negotiation, complies with IEEE 802.3, store-and-forward switching mode, includes alarm contacts |
| Signal contact control voltage | 24 V DC |
| Signal contact control current | 1 A |
| Status and diagnostic indicators | LEDs: U _{S1} , U _{S2} (redundant voltage supply), link and activity per port |
| Additional functions | Autonegotiation |

Security functions

| | |
|-----------------|--|
| Basic functions | Unmanaged switch / auto negotiation, complies with IEEE 802.3, store-and-forward switching mode, includes alarm contacts |
|-----------------|--|

Electrical properties

Industrial Ethernet Switch - FL SWITCH SFN 16TX



2891933

<https://www.phoenixcontact.com/us/products/2891933>

| | |
|---|---|
| Local diagnostics | US Supply voltage Green LED |
| | LNK/ACT Link status/data transmission Green LED |
| | 100 Data transmission speed Yellow LED |
| Maximum power dissipation for nominal condition | 8.4 W |
| Test section | 500 V DC 1 min. |
| Transmission medium | Copper |

Supply

| | |
|-----------------------------|--|
| Supply voltage (DC) | 24 V DC (redundant) |
| Supply voltage range | 12 V DC ... 48 V DC |
| Power supply connection | Via COMBICON, max. conductor cross section 2.5 mm ² |
| Residual ripple | 3.6 V _{PP} (within the permitted voltage range) |
| Max. current consumption | 700 mA (at 12 V DC) |
| Typical current consumption | 245 mA (at U _S = 24 V DC) |

Function

| | |
|--------------------------------|---------|
| Signal contact control voltage | 24 V DC |
| Signal contact control current | 1 A |

Connection data

| | |
|-----------------------------------|---|
| Connection method | Screw connection |
| Conductor cross section, rigid | 0.2 mm ² ... 2.5 mm ² |
| Conductor cross section, flexible | 0.2 mm ² ... 2.5 mm ² |
| Conductor cross section AWG | 30 ... 12 |
| Stripping length | 7 mm |

Environmental and real-life conditions

Ambient conditions

| | |
|--|---|
| Degree of protection | IP20 |
| Ambient temperature (operation) | 0 °C ... 60 °C |
| Ambient temperature (storage/transport) | -40 °C ... 85 °C |
| Permissible humidity (operation) | 5 % ... 95 % (non-condensing) |
| Permissible humidity (storage/transport) | 5 % ... 95 % (non-condensing) |
| Shock | 25g, in accordance with IEC 60068-2-27 |
| Vibration (operation) | in acc. with IEC 60068-2-6: 5g, 150 Hz |
| Air pressure (operation) | 86 kPa ... 108 kPa (up to 1500 m above sea level) |
| Air pressure (storage/transport) | 66 kPa ... 108 kPa (up to 3500 m above sea level) |

Approval data

Conformity/Approvals

| | |
|------------------|------------------------------------|
| UL, USA / Canada | Class I, Div. 2, Groups A, B, C, D |
|------------------|------------------------------------|

EMC data

| | |
|---------------------------------|---------------|
| Conformance with EMC directives | IEC 61000-6-2 |
|---------------------------------|---------------|

Industrial Ethernet Switch - FL SWITCH SFN 16TX



2891933

<https://www.phoenixcontact.com/us/products/2891933>

| | |
|-------------------------------|--|
| Electromagnetic compatibility | Conformance with EMC Directive 2004/108/EC |
| Noise emission | EN 61000-6-4 |
| Noise immunity | EN 61000-6-2 |

LED signaling

| | |
|----------------|--|
| Status display | LEDs: U_{S1} , U_{S2} (redundant voltage supply), link and activity per port |
|----------------|--|

Industrial Ethernet Switch - FL SWITCH SFN 16TX



2891933

<https://www.phoenixcontact.com/us/products/2891933>

Approvals



EAC

Approval ID: RU*-DE.*.B.00741/19



UL Listed

Approval ID: FILE E 140324



cUL Listed

Approval ID: FILE E 140324



KC

Approval ID: KCC-REI-PCK-FL289193



cUL Listed

Approval ID: FILE E 238705



UL Listed

Approval ID: FILE E 238705



cUL Listed

Approval ID: FILE E 199827



UL Listed

Approval ID: FILE E 199827

cULus Listed

Industrial Ethernet Switch - FL SWITCH SFN 16TX



2891933

<https://www.phoenixcontact.com/us/products/2891933>

Classifications

ECLASS

| | |
|---------------|----------|
| ECLASS-9.0 | 19170106 |
| ECLASS-10.0.1 | 19170402 |
| ECLASS-11.0 | 19170402 |

ETIM

| | |
|----------|----------|
| ETIM 8.0 | EC000734 |
|----------|----------|

UNSPSC

| | |
|-------------|----------|
| UNSPSC 21.0 | 43222600 |
|-------------|----------|

Industrial Ethernet Switch - FL SWITCH SFN 16TX



2891933

<https://www.phoenixcontact.com/us/products/2891933>

Environmental Product Compliance

| | |
|------------|--|
| REACH SVHC | Lead 7439-92-1 |
| China RoHS | Environmentally Friendly Use Period = 10; |
| | For information on hazardous substances, refer to the manufacturer's declaration available under "Downloads" |

2891933

<https://www.phoenixcontact.com/us/products/2891933>

Accessories

PCB connector

PCB connector - MSTB 2,5/ 2-ST - 1754449

<https://www.phoenixcontact.com/us/products/1754449>

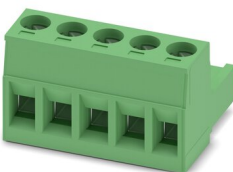


PCB connector, nominal cross section: 2.5 mm², color: green, nominal current: 12 A, rated voltage (III/2): 320 V, contact surface: Tin, type of contact: Female connector, number of potentials: 2, number of rows: 1, number of positions: 2, number of connections: 2, product range: MSTB 2,5/...-ST, pitch: 5 mm, connection method: Screw connection with tension sleeve, screw head form: L Slotted, conductor/PCB connection direction: 0 °, locking clip: - Locking clip, plug-in system: COMBICON MSTB 2,5, locking: without, mounting: without, type of packaging: packed in cardboard

PCB connector

PCB connector - MSTB 2,5/ 5-ST - 1754504

<https://www.phoenixcontact.com/us/products/1754504>



PCB connector, nominal cross section: 2.5 mm², color: green, nominal current: 12 A, rated voltage (III/2): 320 V, contact surface: Tin, type of contact: Female connector, number of potentials: 5, number of rows: 1, number of positions: 5, number of connections: 5, product range: MSTB 2,5/...-ST, pitch: 5 mm, connection method: Screw connection with tension sleeve, screw head form: L Slotted, conductor/PCB connection direction: 0 °, locking clip: - Locking clip, plug-in system: COMBICON MSTB 2,5, locking: without, mounting: without, type of packaging: packed in cardboard

Industrial Ethernet Switch - FL SWITCH SFN 16TX



2891933

<https://www.phoenixcontact.com/us/products/2891933>

Surge protection device

Surge protection device - DT-LAN-CAT.6+ - 2881007

<https://www.phoenixcontact.com/us/products/2881007>



Surge protection in accordance with Class E_A (CAT6_A), for Gigabit Ethernet (up to 10 Gbps), token ring, FDDI/CDDI, ISDN, and DS1. Suitable for Power over Ethernet (PoE++ / 4PPoE) "Mode A" and "Mode B". RJ45 attachment plug with separate grounding cable and ground connection snap-on foot for NS 35 DIN rails.

Patch cable

Patch cable - FL CAT5 PATCH 0,5 - 2832263

<https://www.phoenixcontact.com/us/products/2832263>



Patch cable, CAT5, assembled, 0.5 m

Industrial Ethernet Switch - FL SWITCH SFN 16TX



2891933

<https://www.phoenixcontact.com/us/products/2891933>

Patch cable

Patch cable - FL CAT5 PATCH 1,0 - 2832276

<https://www.phoenixcontact.com/us/products/2832276>



Patch cable, CAT5, assembled, 1 m

Patch cable

Patch cable - FL CAT5 PATCH 2,0 - 2832289

<https://www.phoenixcontact.com/us/products/2832289>



Patch cable, CAT5, assembled, 2 m

Industrial Ethernet Switch - FL SWITCH SFN 16TX



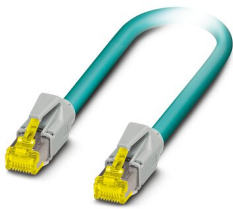
2891933

<https://www.phoenixcontact.com/us/products/2891933>

Patch cable

Patch cable - NBC-R4AC-R4AC-IE8A/.../... - 1411854

<https://www.phoenixcontact.com/us/products/1411854>

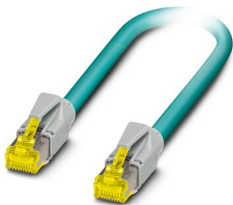


Patch cable, degree of protection: IP20, number of positions: 8, 10 Gbps, CAT6_A, cable outlet: straight, Ethernet

Patch cable

Patch cable - NBC-R4AC/10G-R4AC/10G-94F/2,0 - 1408360

<https://www.phoenixcontact.com/us/products/1408360>



Patch cable, CAT6_A, 4-pair, shielded, connection not crossed (line), assembled at both ends with RJ45/IP20 connectors, outer sheath material: PUR, length: 2.0 m

Industrial Ethernet Switch - FL SWITCH SFN 16TX



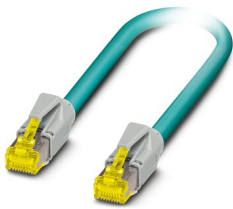
2891933

<https://www.phoenixcontact.com/us/products/2891933>

Patch cable

Patch cable - NBC-R4AC/10G-R4AC/10G-94F/3,0 - 1408365

<https://www.phoenixcontact.com/us/products/1408365>



Patch cable, CAT6_A, 4-pair, shielded, connection not crossed (line), assembled at both ends with RJ45/IP20 connectors, outer sheath material: PUR, length: 3.0 m

Port Guard Security Element

Port Guard Security Element - FL SEC PAC 4TX - 2832865

<https://www.phoenixcontact.com/us/products/2832865>



Layer1 security elements for four RJ45 network connections for use with patch boxes and panels

Industrial Ethernet Switch - FL SWITCH SFN 16TX



2891933

<https://www.phoenixcontact.com/us/products/2891933>

DIN rail adapter

DIN rail adapter - FL DIN RA - 2891053

<https://www.phoenixcontact.com/us/products/2891053>

The FL DIN RA is installed in a standard, 19-inch rack (EIA-310-D, IEC 60297-3-100) to allow DIN rail mounted equipment to be rack mounted.

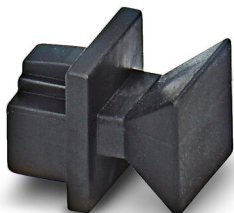


Dust protection

Dust protection - FL RJ45 PROTECT CAP - 2832991

<https://www.phoenixcontact.com/us/products/2832991>

Dust protection caps for RJ45 socket



Industrial Ethernet Switch - FL SWITCH SFN 16TX



2891933

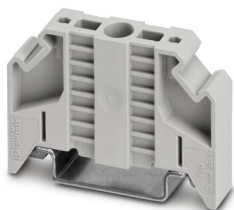
<https://www.phoenixcontact.com/us/products/2891933>

End clamp

End clamp - E/NS 35 N - 0800886

<https://www.phoenixcontact.com/us/products/0800886>

End clamp, width: 9.5 mm, color: gray



Phoenix Contact 2023 © - all rights reserved

<https://www.phoenixcontact.com>

Phoenix Contact USA
586 Fulling Mill Road
Middletown, PA 17057, United States
(+717) 944-1300
info@phoenixcon.com