

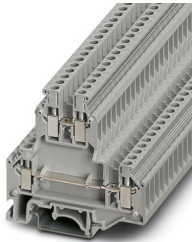
Double-level terminal block - UKKB 5



2771146

<https://www.phoenixcontact.com/pc/products/2771146>

Please be informed that the data shown in this PDF document is generated from our Online Catalog. Please find the complete data in the user documentation. Our General Terms of Use for Downloads are valid.



Double-level terminal block, nom. voltage: 500 V, nominal current: 32 A, connection method: Screw connection, 1st and 2nd level, Rated cross section: 4 mm², cross section: 0.2 mm² - 4 mm², mounting type: NS 35/7,5, NS 35/15, NS 32, color: gray

Your advantages

- Large-surface labeling option

Commercial Data

Item number	2771146
Packing unit	50 pc
Minimum order quantity	1 pc
Product Key	BE1214
Catalog Page	Page 473 (C-1-2019)
GTIN	4017918068226
Weight per Piece (including packing)	16.52 g
Weight per Piece (excluding packing)	16.27 g
Customs tariff number	85369010
Country of origin	CN

2771146

<https://www.phoenixcontact.com/pc/products/2771146>

Technical Data

Product properties

Product type	Multi-level terminal block
Number of connections	4
Number of rows	2
Potentials	2

Insulation characteristics

Overvoltage category	III
Degree of pollution	3

Electrical properties

Rated surge voltage	6 kV
Maximum power dissipation for nominal condition	1.02 W

Connection data

Number of connections per level	2
Nominal cross section	4 mm ²

1st and 2nd level

Screw thread	M3
Tightening torque	0.6 ... 0.8 Nm
Stripping length	8 mm
Connection in acc. with standard	IEC 60947-7-1
Conductor cross section solid	0.2 mm ² ... 4 mm ²
Cross section AWG	24 ... 12 (converted acc. to IEC)
Conductor cross section flexible	0.2 mm ² ... 4 mm ²
Conductor cross section, flexible [AWG]	24 ... 12 (converted acc. to IEC)
Flexible conductor cross section flexible (ferrule, w/o plastic sleeve)	0.25 mm ² ... 4 mm ²
Flexible conductor cross section (ferrule with plastic sleeve)	0.25 mm ² ... 2.5 mm ²
Cross-section with insertion bridge, rigid	4 mm ²
Cross-section with insertion bridge, flexible	2.5 mm ²
2 conductors with same cross section, solid	0.2 mm ² ... 1.5 mm ²
2 conductors with same cross section, flexible	0.2 mm ² ... 1.5 mm ²
2 conductors with same cross section, flexible, with ferrule without plastic sleeve	0.25 mm ² ... 1.5 mm ²
2 conductors with the same cross section, flexible, with TWIN ferrule with plastic sleeve	0.5 mm ² ... 1.5 mm ²
Nominal current	32 A
Maximum load current	32 A (with 4 mm ² conductor cross section)
Nominal voltage	500 V
Nominal cross section	4 mm ²

Double-level terminal block - UKKB 5



2771146

<https://www.phoenixcontact.com/pc/products/2771146>

Dimensions

Width	6.2 mm
End cover width	2.5 mm
Height NS 35/15	69.5 mm
Height NS 35/7,5	62 mm
Height	2.441 "
Height NS 32	67 mm
Length	67 mm

Material specifications

Color	gray
Flammability rating according to UL 94	V0
Insulating material group	I
Insulating material	PA
Static insulating material application in cold	-60 °C
Temperature index of insulation material (DIN EN 60216-1 (VDE 0304-21))	130 °C
Relative insulation material temperature index (Elec., UL 746 B)	130 °C
Fire protection for rail vehicles (DIN EN 45545-2) R22	HL 1 - HL 3
Fire protection for rail vehicles (DIN EN 45545-2) R23	HL 1 - HL 3
Fire protection for rail vehicles (DIN EN 45545-2) R24	HL 1 - HL 3
Fire protection for rail vehicles (DIN EN 45545-2) R26	HL 1 - HL 3
Calorimetric heat release NFPA 130 (ASTM E 1354)	28 MJ/kg
Surface flammability NFPA 130 (ASTM E 162)	passed
Specific optical density of smoke NFPA 130 (ASTM E 662)	passed
Smoke gas toxicity NFPA 130 (SMP 800C)	passed

Electrical tests

Surge voltage test

Test voltage setpoint	7.3 kV
Result	Test passed

Temperature-rise test

Requirement temperature-rise test	Increase in temperature \leq 45 K
Result	Test passed
Short-time withstand current 4 mm ²	0.48 kA
Result	Test passed

Power-frequency withstand voltage

Test voltage setpoint	1.89 kV
Result	Test passed

Mechanical properties

Mechanical data

Double-level terminal block - UKKB 5



2771146

<https://www.phoenixcontact.com/pc/products/2771146>

Open side panel	Yes
-----------------	-----

Mechanical tests

Mechanical strength

Result	Test passed
--------	-------------

Attachment on the carrier

DIN rail/fixing support	NS 32/NS 35
Test force setpoint	1 N
Result	Test passed

Test for conductor damage and slackening

Rotation speed	10 rpm
Revolutions	135
Conductor cross section/weight	0.2 mm ² / 0.2 kg 4 mm ² / 0.9 kg
Result	Test passed

Environmental and real-life conditions

Needle-flame test

Time of exposure	30 s
Result	Test passed

Ambient conditions

Ambient temperature (operation)	-60 °C ... 105 °C (max. short-term operating temperature RTI Elec.)
Ambient temperature (storage/transport)	-25 °C ... 60 °C (for a short time, not exceeding 24 h, -60 °C to +70 °C)
Ambient temperature (assembly)	-5 °C ... 70 °C
Ambient temperature (actuation)	-5 °C ... 70 °C
Permissible humidity (storage/transport)	30 % ... 70 %

Standards and regulations

Connection in acc. with standard	IEC 60947-7-1
----------------------------------	---------------

Mounting

Mounting type	NS 35/7,5
	NS 35/15
	NS 32

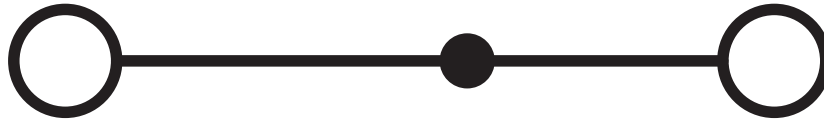
Double-level terminal block - UKKB 5

2771146

<https://www.phoenixcontact.com/pc/products/2771146>

Drawings

Circuit diagram



Double-level terminal block - UKKB 5



2771146

<https://www.phoenixcontact.com/pc/products/2771146>

Approvals

DNV Approval ID: TAE00001CT				
	Nominal Voltage U_N	Nominal Current I_N	Cross Section AWG	Cross Section mm^2
			-	-

CSA Approval ID: 13631				
----------------------------------	--	--	--	--

cUL Recognized Approval ID: FILE E 60425				
	Nominal Voltage U_N	Nominal Current I_N	Cross Section AWG	Cross Section mm^2
	600 V	30 A	26 - 10	-

IECEE CB Scheme Approval ID: NL-39955/A1				
	Nominal Voltage U_N	Nominal Current I_N	Cross Section AWG	Cross Section mm^2
	32 V	500 A	-	- 4

EAC Approval ID: RU C-DE.BL08.B.00534				
---	--	--	--	--

cULus Recognized Approval ID: E60425				
	Nominal Voltage U_N	Nominal Current I_N	Cross Section AWG	Cross Section mm^2
Use group B	300 V	30 A	26 - 10	-
Use group C	300 V	30 A	26 - 10	-
Use group F	500 V	30 A	26 - 10	-
Use group D	600 V	5 A	26 - 10	-

KEMA-KEUR Approval ID: 71-119849				
	Nominal Voltage U_N	Nominal Current I_N	Cross Section AWG	Cross Section mm^2
	500 V	32 A	-	- 4

Double-level terminal block - UKKB 5




2771146

<https://www.phoenixcontact.com/pc/products/2771146>

 LR Approval ID: 96/20013				
	Nominal Voltage U_N	Nominal Current I_N	Cross Section AWG	Cross Section mm^2
	500 V	32 A	-	- 4

 NK Approval ID: 09 ME 141				
	Nominal Voltage U_N	Nominal Current I_N	Cross Section AWG	Cross Section mm^2
			-	-

 RS Approval ID: 22.44.01.00083.250				
--	--	--	--	--

Double-level terminal block - UKKB 5



2771146

<https://www.phoenixcontact.com/pc/products/2771146>

Classifications

ECLASS

ECLASS-9.0	27141120
ECLASS-10.0.1	27141120
ECLASS-11.0	27141120

ETIM

ETIM 8.0	EC000897
----------	----------

UNSPSC

UNSPSC 21.0	39121400
-------------	----------

Double-level terminal block - UKKB 5



2771146

<https://www.phoenixcontact.com/pc/products/2771146>

Environmental Product Compliance

China RoHS	Environmentally friendly use period: unlimited = EFUP-e
	No hazardous substances above threshold values

Double-level terminal block - UKKB 5

2771146

<https://www.phoenixcontact.com/pc/products/2771146>

Accessories

 Note: Applying some accessories below might limit this product.

Bridge bar isolator

Bridge bar isolator - IS-K 4 - 1302338

<https://www.phoenixcontact.com/pc/products/1302338>



Bridge bar isolator, color: gray

Bridge

Bridge - ISSBI 10- 6 - 0301505

<https://www.phoenixcontact.com/pc/products/0301505>



Bridge, pitch: 6 mm, color: silver

 Max. current carrying capacity: 24 A

Double-level terminal block - UKKB 5

2771146

<https://www.phoenixcontact.com/pc/products/2771146>




Bridge

Bridge - LB 10-6 BU - 0202280

<https://www.phoenixcontact.com/pc/products/0202280>



Bridge, pitch: 6 mm, color: blue

 Max. current carrying capacity: 32 A


Bridge

Bridge - LB 10-6 RD - 0202293

<https://www.phoenixcontact.com/pc/products/0202293>



Bridge, pitch: 6 mm, color: red

 Max. current carrying capacity: 32 A

Double-level terminal block - UKKB 5

2771146

<https://www.phoenixcontact.com/pc/products/2771146>



Bridge

Bridge - LB 10-6 GY - 0202358

<https://www.phoenixcontact.com/pc/products/0202358>



Bridge, pitch: 6 mm, color: gray

 Max. current carrying capacity: 32 A

Bridge

Bridge - LB 100-6 GY - 0202345

<https://www.phoenixcontact.com/pc/products/0202345>



Bridge, pitch: 6 mm, color: gray

 Max. current carrying capacity: 32 A

Double-level terminal block - UKKB 5

2771146

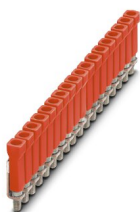
<https://www.phoenixcontact.com/pc/products/2771146>



Bridge

Bridge - LB 100-6 RD - 0202316

<https://www.phoenixcontact.com/pc/products/0202316>



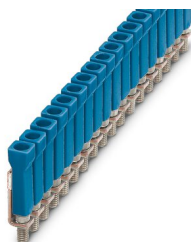
Bridge, color: red

 Max. current carrying capacity: 32 A

Bridge

Bridge - LB 100-6 BU - 0202303

<https://www.phoenixcontact.com/pc/products/0202303>



Bridge, color: blue

 Max. current carrying capacity: 32 A

Double-level terminal block - UKKB 5

2771146

<https://www.phoenixcontact.com/pc/products/2771146>



Fixed bridge

Fixed bridge - FBI 10- 6 - 0203250

<https://www.phoenixcontact.com/pc/products/0203250>

Fixed bridge, pitch: 6.2 mm, color: silver



 Max. current carrying capacity: 32 A

Fixed bridge

Fixed bridge - FBI 20- 6 - 0201867

<https://www.phoenixcontact.com/pc/products/0201867>

Fixed bridge, pitch: 6.2 mm, color: silver



 Max. current carrying capacity: 32 A

Double-level terminal block - UKKB 5

2771146

<https://www.phoenixcontact.com/pc/products/2771146>




Fixed bridge

Fixed bridge - FBI 100- 6 - 0201650

<https://www.phoenixcontact.com/pc/products/0201650>

Fixed bridge, pitch: 6.2 mm, color: silver



 Max. current carrying capacity: 32 A


Insertion bridge

Insertion bridge - EB 2- 6 - 0201155

<https://www.phoenixcontact.com/pc/products/0201155>

Insertion bridge, pitch: 6.2 mm, color: gray



 Max. current carrying capacity: 30 A

Double-level terminal block - UKKB 5

2771146

<https://www.phoenixcontact.com/pc/products/2771146>




Insertion bridge

Insertion bridge - EB 3- 6 - 0201142

<https://www.phoenixcontact.com/pc/products/0201142>

Insertion bridge, pitch: 6.2 mm, color: gray



 Max. current carrying capacity: 30 A


Insertion bridge

Insertion bridge - EB 10- 6 - 0201139

<https://www.phoenixcontact.com/pc/products/0201139>

Insertion bridge, pitch: 6.2 mm, color: gray



 Max. current carrying capacity: 30 A

Double-level terminal block - UKKB 5

2771146

<https://www.phoenixcontact.com/pc/products/2771146>


Switching jumper

Switching jumper - SBRN 2-7 - 1413230

<https://www.phoenixcontact.com/pc/products/1413230>



Switching jumper, pitch: 7 mm, color: silver

 Max. current carrying capacity: 30 A


Switching jumper

Switching jumper - USBR 2-7 - 2303239

<https://www.phoenixcontact.com/pc/products/2303239>



Switching jumper, pitch: 7 mm, color: silver

 Max. current carrying capacity: 30 A

Double-level terminal block - UKKB 5

2771146

<https://www.phoenixcontact.com/pc/products/2771146>

Switching jumper

Switching jumper - USBRJ 2-7 - 2305538

<https://www.phoenixcontact.com/pc/products/2305538>



Switching jumper, color: silver

 Max. current carrying capacity: 30 A

Spacer plate

Spacer plate - DP-UKKB 3/ 5 - 2770804

<https://www.phoenixcontact.com/pc/products/2770804>

Spacer plate, to compensate for level offsets, length: 67 mm, width: 2.5 mm, height: 25 mm, color: gray



Double-level terminal block - UKKB 5

2771146

<https://www.phoenixcontact.com/pc/products/2771146>

Spacer plate

Spacer plate - DG-UKKB 3/ 5 - 2770859

<https://www.phoenixcontact.com/pc/products/2770859>



Spacer plate, to compensate for level offsets, length: 67 mm, width: 2.5 mm, color: gray

End cover

End cover - D-UKKB 3/5 - 2771023

<https://www.phoenixcontact.com/pc/products/2771023>



End cover, length: 67.2 mm, width: 2.5 mm, height: 52 mm, color: gray

Double-level terminal block - UKKB 5

2771146

<https://www.phoenixcontact.com/pc/products/2771146>



Fixed bridge

Fixed bridge - FB-150 METER - 0201595

<https://www.phoenixcontact.com/pc/products/0201595>



Cross connection rail, for fixed bridging of identical inputs and outputs, made of Cu, nickel-plated, 1 m long

Short-circuit connector

Short-circuit connector - KSS 3-6 - 0309523

<https://www.phoenixcontact.com/pc/products/0309523>



Short-circuit connector, pitch: 6 mm, color: black

Double-level terminal block - UKKB 5

2771146

<https://www.phoenixcontact.com/pc/products/2771146>



Short-circuit connector

Short-circuit connector - KSS 6 - 0301547

<https://www.phoenixcontact.com/pc/products/0301547>



Short-circuit connector, pitch: 6 mm, color: black

Test plugs

Test plugs - PS-UKK 5 - 3000625

<https://www.phoenixcontact.com/pc/products/3000625>



Test plugs, color: red

Double-level terminal block - UKKB 5

2771146

<https://www.phoenixcontact.com/pc/products/2771146>

Test plugs

Test plugs - PS-UKK/E - 3000641

<https://www.phoenixcontact.com/pc/products/3000641>



Test plugs, color: red

Reducing plug

Reducing plug - RPS - 0201647

<https://www.phoenixcontact.com/pc/products/0201647>



Reducing plug, color: gray

Double-level terminal block - UKKB 5

2771146

<https://www.phoenixcontact.com/pc/products/2771146>

Separating plate

Separating plate - TS-KK 3 - 2770215

<https://www.phoenixcontact.com/pc/products/2770215>



Separating plate, length: 14 mm, width: 0.5 mm, height: 16 mm, color: gray

Partition plate

Partition plate - ATP-UKKB 3 - 2771065

<https://www.phoenixcontact.com/pc/products/2771065>



Partition plate, length: 75 mm, width: 2.5 mm, height: 67 mm, color: gray

Double-level terminal block - UKKB 5

2771146

<https://www.phoenixcontact.com/pc/products/2771146>

Marker card

Marker card - SBS 6:UNBEDRUCKT - 1007222

<https://www.phoenixcontact.com/pc/products/1007222>



Marker card, Card, white, unlabeled, can be labeled with: Marker pen, mounting type: snapped, snap into flat marker groove, for terminal block width: 6 mm, lettering field size: 6 x 6.1 mm, Number of individual labels: 250

DIN rail perforated

DIN rail perforated - NS 32 PERF 2000MM-VPE 10 - 1201002

<https://www.phoenixcontact.com/pc/products/1201002>



DIN rail perforated, acc. to EN 60715, material: Steel, galvanized, passivated with a thick layer, G profile, color: silver, Pack of 10 (20 m)

Double-level terminal block - UKKB 5

2771146

<https://www.phoenixcontact.com/pc/products/2771146>



DIN rail, unperforated

DIN rail, unperforated - NS 32 UNPERF 2000MM-VPE 10 - 1201015

<https://www.phoenixcontact.com/pc/products/1201015>



DIN rail, unperforated, acc. to EN 60715, material: Steel, galvanized, passivated with a thick layer, G profile, color: silver, Pack of 10 (20 m)

DIN rail perforated

DIN rail perforated - NS 35/ 7,5 PERF 2000MM - 0801733

<https://www.phoenixcontact.com/pc/products/0801733>



DIN rail perforated, acc. to EN 60715, material: Steel, galvanized, passivated with a thick layer, Standard profile, color: silver, Pack of 25 (50 m)

Double-level terminal block - UKKB 5

2771146

<https://www.phoenixcontact.com/pc/products/2771146>

DIN rail, unperforated

DIN rail, unperforated - NS 35/ 7,5 UNPERF 2000MM - 0801681

<https://www.phoenixcontact.com/pc/products/0801681>



DIN rail, unperforated, acc. to EN 60715, material: Steel, galvanized, passivated with a thick layer, Standard profile, color: silver, Pack of 25 (50 m)

DIN rail perforated

DIN rail perforated - NS 35/ 7,5 WH PERF 2000MM - 1204119

<https://www.phoenixcontact.com/pc/products/1204119>



DIN rail perforated, acc. to EN 60715, material: Steel, Galvanized, white passivated, Standard profile, color: silver, Pack of 25 (50 m)

Double-level terminal block - UKKB 5

2771146

<https://www.phoenixcontact.com/pc/products/2771146>

DIN rail, unperforated

DIN rail, unperforated - NS 35/ 7,5 WH UNPERF 2000MM-VPE 10 - 1204122

<https://www.phoenixcontact.com/pc/products/1204122>



DIN rail, unperforated, acc. to EN 60715, material: Steel, Galvanized, white passivated, Standard profile, color: silver, Pack of 10 (20 m)

DIN rail, unperforated

DIN rail, unperforated - NS 35/ 7,5 AL UNPERF 2000MM - 0801704

<https://www.phoenixcontact.com/pc/products/0801704>



DIN rail, unperforated, acc. to EN 60715, material: Aluminum, uncoated, Standard profile, color: silver, Pack of 25 (50 m)

Double-level terminal block - UKKB 5

2771146

<https://www.phoenixcontact.com/pc/products/2771146>

DIN rail perforated

DIN rail perforated - NS 35/ 7,5 ZN PERF 2000MM - 1206421

<https://www.phoenixcontact.com/pc/products/1206421>



DIN rail perforated, acc. to EN 60715, material: Steel, galvanized, Standard profile, color: silver, Pack of 25 (50 m)

DIN rail, unperforated

DIN rail, unperforated - NS 35/ 7,5 ZN UNPERF 2000MM - 1206434

<https://www.phoenixcontact.com/pc/products/1206434>



DIN rail, unperforated, acc. to EN 60715, material: Steel, galvanized, Standard profile, color: silver, Pack of 25 (50 m)

Double-level terminal block - UKKB 5

2771146

<https://www.phoenixcontact.com/pc/products/2771146>



DIN rail, unperforated

DIN rail, unperforated - NS 35/ 7,5 CU UNPERF 2000MM-VPE 10 - 0801762

<https://www.phoenixcontact.com/pc/products/0801762>



DIN rail, unperforated, acc. to EN 60715, material: Copper, uncoated, Standard profile, color: copper-colored, Pack of 10 (20 m)

End cap

End cap - NS 35/ 7,5 CAP - 1206560

<https://www.phoenixcontact.com/pc/products/1206560>

DIN rail end piece, for DIN rail NS 35/7.5



Double-level terminal block - UKKB 5

2771146

<https://www.phoenixcontact.com/pc/products/2771146>

DIN rail perforated

DIN rail perforated - NS 35/15 PERF 2000MM - 1201730

<https://www.phoenixcontact.com/pc/products/1201730>



DIN rail perforated, similar to EN 60715, material: Steel, galvanized, passivated with a thick layer, Standard profile, color: silver, Pack of 25 (50 m)

DIN rail, unperforated

DIN rail, unperforated - NS 35/15 UNPERF 2000MM - 1201714

<https://www.phoenixcontact.com/pc/products/1201714>



DIN rail, unperforated, similar to EN 60715, material: Steel, galvanized, passivated with a thick layer, Standard profile, color: silver, Pack of 25 (50 m)

Double-level terminal block - UKKB 5

2771146

<https://www.phoenixcontact.com/pc/products/2771146>

DIN rail perforated

DIN rail perforated - NS 35/15 WH PERF 2000MM - 0806602

<https://www.phoenixcontact.com/pc/products/0806602>



DIN rail perforated, similar to EN 60715, material: Steel, Galvanized, white passivated, Standard profile, color: white, Pack of 25 (50 m)

DIN rail, unperforated

DIN rail, unperforated - NS 35/15 WH UNPERF 2000MM-VPE 10 - 1204135

<https://www.phoenixcontact.com/pc/products/1204135>



DIN rail, unperforated, similar to EN 60715, material: Steel, Galvanized, white passivated, Standard profile, color: silver, Pack of 10 (20 m)

Double-level terminal block - UKKB 5

2771146

<https://www.phoenixcontact.com/pc/products/2771146>

DIN rail, unperforated

DIN rail, unperforated - NS 35/15 AL UNPERF 2000MM - 1201756

<https://www.phoenixcontact.com/pc/products/1201756>



DIN rail, unperforated, similar to EN 60715, material: Aluminum, uncoated, Standard profile, color: silver

DIN rail perforated

DIN rail perforated - NS 35/15 ZN PERF 2000MM - 1206599

<https://www.phoenixcontact.com/pc/products/1206599>



DIN rail perforated, similar to EN 60715, material: Steel, galvanized, Standard profile, color: silver, Pack of 25 (50 m)

Double-level terminal block - UKKB 5

2771146

<https://www.phoenixcontact.com/pc/products/2771146>

DIN rail, unperforated

DIN rail, unperforated - NS 35/15 ZN UNPERF 2000MM - 1206586

<https://www.phoenixcontact.com/pc/products/1206586>



DIN rail, unperforated, similar to EN 60715, material: Steel, galvanized, Standard profile, color: silver, Pack of 25 (50 m)

DIN rail, unperforated

DIN rail, unperforated - NS 35/15 CU UNPERF 2000MM-VPE 10 - 1201895

<https://www.phoenixcontact.com/pc/products/1201895>



DIN rail, unperforated, similar to EN 60715, material: Copper, uncoated, Standard profile, color: copper-colored, Pack of 10 (20 m)

Double-level terminal block - UKKB 5

2771146

<https://www.phoenixcontact.com/pc/products/2771146>



End cap

End cap - NS 35/15 CAP - 1206573

<https://www.phoenixcontact.com/pc/products/1206573>

DIN rail end piece, for DIN rail NS 35/15



DIN rail, unperforated

DIN rail, unperforated - NS 35/15-2,3 UNPERF 2000MM-VPE 10 - 1201798

<https://www.phoenixcontact.com/pc/products/1201798>



DIN rail, unperforated, acc. to EN 60715, material: Steel, galvanized, passivated with a thick layer, Standard profile 2.3 mm, color: silver, Pack of 10 (20 m)

Double-level terminal block - UKKB 5

2771146

<https://www.phoenixcontact.com/pc/products/2771146>

Zack marker strip

Zack marker strip - ZB 6:UNBEDRUCKT - 1051003

<https://www.phoenixcontact.com/pc/products/1051003>



Zack marker strip, Strip, white, unlabeled, can be labeled with: PLOTMARK, CMS-P1-PLOTTER, mounting type: snapped, for terminal block width: 6.2 mm, lettering field size: 6.15 x 10.5 mm, Number of individual labels: 10

Zack marker strip

Zack marker strip - ZB 6 CUS - 0824992

<https://www.phoenixcontact.com/pc/products/0824992>



Zack marker strip, can be ordered: Strip, white, labeled according to customer specifications, mounting type: snap into tall marker groove, for terminal block width: 6.2 mm, lettering field size: 6.15 x 10.5 mm, Number of individual labels: 10

Double-level terminal block - UKKB 5

2771146

<https://www.phoenixcontact.com/pc/products/2771146>

Zack marker strip

Zack marker strip - ZB 6,LGS:FORTL.ZAHLEN - 1051016

<https://www.phoenixcontact.com/pc/products/1051016>

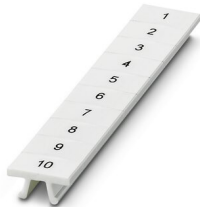


Zack marker strip, Strip, white, labeled, can be labeled with: CMS-P1-PLOTTER, printed horizontally: consecutive numbers 1 ... 10, 11 ... 20, etc. up to 491 ... 500, mounting type: snapped, for terminal block width: 6.2 mm, lettering field size: 6. 15 x 10.5 mm, Number of individual labels: 10

Zack marker strip

Zack marker strip - ZB 6,QR:FORTL.ZAHLEN - 1051029

<https://www.phoenixcontact.com/pc/products/1051029>



Zack marker strip, Strip, white, labeled, can be labeled with: CMS-P1-PLOTTER, Printed vertically: consecutive numbers 1 ... 10, 11 ... 20, etc. up to 491 ... 500, mounting type: snapped, for terminal block width: 6.2 mm, lettering field size: 6. 15 x 10.5 mm, Number of individual labels: 10

Double-level terminal block - UKKB 5

2771146

<https://www.phoenixcontact.com/pc/products/2771146>

Zack marker strip

Zack marker strip - ZB 6,LGS:GLEICHE ZAHLEN - 1051032

<https://www.phoenixcontact.com/pc/products/1051032>



Zack marker strip, Strip, white, labeled, can be labeled with: CMS-P1-PLOTTER, printed horizontally: Identical numbers 1 or 2, etc. up to 100, mounting type: snapped, for terminal block width: 6.2 mm, lettering field size: 6.15 x 10.5 mm, Number of individual labels: 10

Marker for terminal blocks

Marker for terminal blocks - ZB 6,LGS:L1-N,PE - 1051414

<https://www.phoenixcontact.com/pc/products/1051414>



Marker for terminal blocks, Strip, white, labeled, can be labeled with: CMS-P1-PLOTTER, horizontal: L1, L2, L3, N, PE, L1, L2, L3, N, PE, mounting type: snapped, for terminal block width: 6.2 mm, lettering field size: 6.15 x 10.5 mm, Number of individual labels: 10

Double-level terminal block - UKKB 5

2771146

<https://www.phoenixcontact.com/pc/products/2771146>

Marker for terminal blocks

Marker for terminal blocks - ZB 6,LGS:U-N - 1051430

<https://www.phoenixcontact.com/pc/products/1051430>



Marker for terminal blocks, Strip, white, labeled, can be labeled with: CMS-P1-PLOTTER, printed horizontally: U, V, W, N, GND, U, V, W, N, GND, mounting type: snapped, for terminal block width: 6.2 mm, lettering field size: 6.15 x 10.5 mm, Number of individual labels: 10

Marker for terminal blocks

Marker for terminal blocks - UC-TM 6 - 0818085

<https://www.phoenixcontact.com/pc/products/0818085>



Marker for terminal blocks, Sheet, white, unlabeled, can be labeled with: BLUEMARK ID COLOR, BLUEMARK ID, BLUEMARK CLED, PLOTMARK, CMS-P1-PLOTTER, mounting type: snapped, for terminal block width: 6.2 mm, lettering field size: 5.6 x 10.5 mm, Number of individual labels: 80

Double-level terminal block - UKKB 5

2771146

<https://www.phoenixcontact.com/pc/products/2771146>

Marker for terminal blocks

Marker for terminal blocks - UC-TM 6 CUS - 0824589

<https://www.phoenixcontact.com/pc/products/0824589>



Marker for terminal blocks, can be ordered: by sheet, white, labeled according to customer specifications, mounting type: snap into tall marker groove, for terminal block width: 6.2 mm, lettering field size: 5.6 x 10.5 mm, Number of individual labels: 80

Marker for terminal blocks

Marker for terminal blocks - UCT-TM 6 - 0828736

<https://www.phoenixcontact.com/pc/products/0828736>



Marker for terminal blocks, Sheet, white, unlabeled, can be labeled with: TOPMARK NEO, TOPMARK LASER, BLUEMARK ID COLOR, BLUEMARK ID, BLUEMARK CLED, THERMOMARK PRIME, THERMOMARK CARD 2.0, THERMOMARK CARD, mounting type: snapped, for terminal block width: 6.2 mm, lettering field size: 5.6 x 10.5 mm, Number of individual labels: 60

Double-level terminal block - UKKB 5

2771146

<https://www.phoenixcontact.com/pc/products/2771146>

Marker for terminal blocks

Marker for terminal blocks - UCT-TM 6 CUS - 0829602

<https://www.phoenixcontact.com/pc/products/0829602>



Marker for terminal blocks, can be ordered: by sheet, white, labeled according to customer specifications, mounting type: snap into tall marker groove, for terminal block width: 6.2 mm, lettering field size: 5.6 x 10.5 mm, Number of individual labels: 60

End clamp

End clamp - CLIPFIX 35 - 3022218

<https://www.phoenixcontact.com/pc/products/3022218>



Quick mounting end clamp for NS 35/7,5 DIN rail or NS 35/15 DIN rail, with marking option, width: 9.5 mm, color: gray

Double-level terminal block - UKKB 5

2771146

<https://www.phoenixcontact.com/pc/products/2771146>

End clamp

End clamp - CLIPFIX 35-5 - 3022276

<https://www.phoenixcontact.com/pc/products/3022276>

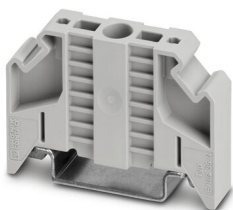


Quick mounting end clamp for NS 35/7,5 DIN rail or NS 35/15 DIN rail, with marking option, with parking option for FBS...5, FBS...6, KSS 5, KSS 6, width: 5.15 mm, color: gray

End clamp

End clamp - E/NS 35 N - 0800886

<https://www.phoenixcontact.com/pc/products/0800886>



End clamp, width: 9.5 mm, color: gray

Double-level terminal block - UKKB 5

2771146

<https://www.phoenixcontact.com/pc/products/2771146>

Female test connector

Female test connector - PSBJ 3/13/4 - 0201304

<https://www.phoenixcontact.com/pc/products/0201304>



Female test connector, color: silver

Female test connector

Female test connector - PSB 3/10/4 - 0601292

<https://www.phoenixcontact.com/pc/products/0601292>



Female test connector, color: silver

Double-level terminal block - UKKB 5

2771146

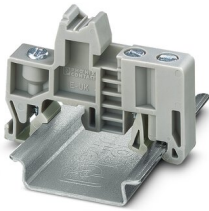
<https://www.phoenixcontact.com/pc/products/2771146>

End clamp

End clamp - E/UK - 1201442

<https://www.phoenixcontact.com/pc/products/1201442>

End clamp, material: PA, color: gray, Mounting on a DIN rail NS 32 or NS 35



End clamp

End clamp - E/UK 1 - 1201413

<https://www.phoenixcontact.com/pc/products/1201413>

End clamps, for supporting the ends of double-level and three-level terminal blocks, width: 10 mm, color: gray



Phoenix Contact 2023 © - all rights reserved
<https://www.phoenixcontact.com>

PHOENIX CONTACT GmbH & Co. KG
Flachsmarktstraße 8
D-32825 Blomberg
+49 (0) 5235-3 00
info@phoenixcontact.com